

LAND CORNER RECORDATION CERTIFICATE  
Filing Requirement of Act 74, Mich. P.A. 1970

For corners in  
Dickinson  
(County)

Located In:

Corner Code #

- 1. Public Land Survey T 42N R 28W 86  
T R  
T R  
T R
- 2. Property Controlling S 18 T 42N R 28W 9  
in Section S T R  
3. Miscellaneous S T R  
Property in Sec. S T R

Register of Deeds Stamp & File Number

- 4. Lot No. \_\_\_\_\_, Recorded Plat \_\_\_\_\_
- 5. Private Claims \_\_\_\_\_

I, Stephan J. Szyszkoski, in a field survey on February 02, 1995, 19\_\_\_\_\_, do hereby certify that under requirements of P.A. 74, Michigan P.A. of 1970, the corner points mentioned in lines 1 and 2 above were in conformance with regulations and rules therefore as required in the current manual of survey instructions of the United States Department of the Interior, Bureau of Land Management or by a decree of a Court of Law and/or that the corner points mentioned in lines 3, 4 and 5 above were in conformance with the rules of the Michigan Board of Land Surveyors or by a Decree of a Court of Law; established, re-established, monumented, re-monumented, recovered, found as expressed below:

NOTE: Not more than 4 corners, all in the same town and range, may be recorded on this certificate.

A. Description of original monument and accessories and/or subsequent restoration:

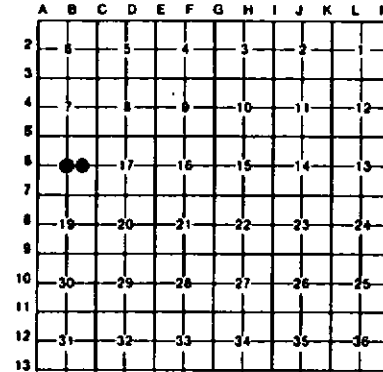
- (86) Center of Section 18. Corner not established in the original survey. Found no subsequent record.
- (9-Sec. 18) East 1/16 corner, Section 18. Corner not established in the original survey. Found no subsequent record.

B. Description of corner evidence found and/or method applied in restoring or reestablishing corner:

- (86) Found no evidence of prior monumentation at the corner position. Established the corner at the intersection of straight lines connecting opposite quarter corners - 2676.00' N, 2661.62' E, 2644.05' S, and 2608.84' W. At the position for the corner, I placed a 1" I.D. x 32" iron pipe capped with a 4" dia. cast aluminum MDNR tablet, appropriately stamped.
- (9-Sec. 18) Found no evidence of prior monumentation at the corner position. Established the corner midway and on a straight line between Quarter corner 1330.81' east and Center of Section 1330.81' West. At the position for the corner, I placed a 1" I.D. x 32" iron pipe capped with a 4" dia. cast aluminum MDNR tablet, appropriately stamped.

C. Description of monument for corner and accessories established to perpetuate locating the position of the corner:

- |   |  |
|---|--|
| (86) Set a 1" iron pipe with 4" MDNR cap. Blazed and scribed the following witnesses: | (9) Set a 1" iron pipe with 4" MDNR cap. Blazed and scribed the following witnesses: |
| 8" Cedar N70W 3.4' 1/4S BT"   | 10" Cedar clump N55W 31.8' 1/16S BT"   |
| 4" Cedar S05W 4.3' 1/4S BT"   | 6" Cedar N21E 19.2' 1/16S BT"  |
| 4" Cedar S26E 13.9' 1/4S BT"  | 14" Cedar N61E 28.2' 1/16S BT"   |
| 6" Cedar N51E 15.0' 1/4S BT"  | 9" Cedar S63E 19.4' 1/16S BT"  |
| Bearings are magnetic.  | Bearings are magnetic.   |



Signed by Stephan J. Szyszkoski Date 2-22-95  
Surveyor's Michigan License No. 33986