

LAND CORNER RECORDATION CERTIFICATE
Filing Requirement of Act 74, Mich. P.A. 1970

For corners in <u>Dickinson</u> <small>(County)</small>	Located In:	Corner Code #
1. Public Land Survey	T 42N R 28W	E6
	T R	
	T R	
	T R	
2. Property Controlling In Section	S 15 T 42N R 28W	3
	S T R	
3. Miscellaneous Property in Sec.	S T R	
	S T R	

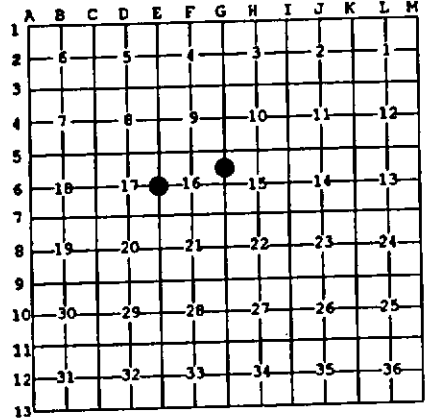
Register of Deeds Stamp & File Number

4. Lot No. _____, Recorded Plat _____
5. Private Claims _____

Jun 17 1997

I, Stephan J. Szyszkoski, in a field survey on _____, 19____ do hereby state that under requirements of P.A. 74, Michigan P.A. of 1970, the corner points mentioned in lines 1 and 2 above were in conformance with regulations and rules therefore as required in the current manual of survey instructions of the United States Department of the Interior, Bureau of Land Management or by a decree of a Court of Law and for that the corner points mentioned in lines 3, 4 and 5 above were in conformance with the rules of the Michigan Board of Land Surveyors or by a Decree of a Court of Law, established, re-established, monumented, recovered, found as expressed below:

NOTE: Not more than 2 corners, all in the same town and range, may be recorded on this certificate.



A. Description of original monument and accessories and/or subsequent restoration:
 (E6) Quarter corner common to Sections 16-17. Corner re-monumented in 1955 by Billy D. Buckler, RLS: "Replaced ... from original B.T. One Cedar B.T. in place, poor condition. Description of corner monument: 1" pipe with 4" brass cap. Witnesses to corner: 10" Cedar N58W 45 links, 9" Cedar S45W 29 links".
 (3-Sec. 15) North 1/16 corner between Sections 16-15. Corner established in 1966 by F.J.Bray, RLS: "This corner was placed midway on line bet. sec. cor. to north and 1/4 cor. to south. Corner monument: 1" iron pipe with 4" aluminum cap. Witnesses to corner: 16" W. Pine S44E 24 links, 11" R. Pine S65W 19.5 links".

B. Description of corner evidence found and/or method applied in restoring or reestablishing corner:
 (E6) Recovered the 1955 monument as described, in good condition, and at record bearing and distance from the 1955 witnesses, both in good condition. Left the monument in place and marked two new accessories as described below. No measurements were made to other corners at this time. This corner is being rerecorded in order to update the accessories. Corner recovered and re-witnessed by B. Wheeler and D. Lampela, Baraga District Office, MDNR.
 (3-Sec. 15) Found the 1966 monument as described, in good condition, and at record bearing and distance from the rotting stump remains of the two 1966 witnesses. Left the monument in place and marked four new accessories as described below. No measurements were made to other corners at this time. This corner is being rerecorded in order to update the accessories. Corner recovered and re-witnessed by D.Lampela and B.Wheeler, Baraga District Office, MDNR.

C. Description of monument for corner and accessories established to perpetuate locating the position of the corner:
 (E6) Found 1" pipe with 4" MI Dept. of Conservation cap. The 1955 witnesses:
 14" Cedar N55W 29.8'
 13" Cedar S44W 19.1'
 Blazed and scribed the following:
 13" Cedar N34E 53.4' "1/4S N8T"
 9" Cedar S83E 42.1' "1/4S N8T"
 Bearings are magnetic.

(3) Found 1" pipe with 4" MDNR cap. Blazed and scribed the following:
 8" R. Pine N07W 7.9' "1/16S BT"
 7" R. Pine S87W 20.6' "1/16S BT"
 14" R. Pine S08W 53.5' "1/16S BT"
 4" Balsam S73E 24.9' "1/16S BT"
 Placed a squared cedar post adjacent. Bearings are magnetic.



Signed by Stephan J. Szyszkoski Date 9/2/97
 Surveyor's Michigan License No. 33986