

LAND CORNER RECORDATION CERTIFICATE
Filing Requirement of Act 74, Mich. P.A. 1970

For corners in

Dickinson
 (County)

Located In: Corner Code #

- | | | |
|------------------------------------|---|-------------|
| 1. Public Land Survey | T <u>42N</u> R <u>28W</u> | <u>C3</u> |
| | T <u> </u> R <u> </u> | <u> </u> |
| | T <u> </u> R <u> </u> | <u> </u> |
| | T <u> </u> R <u> </u> | <u> </u> |
| 2. Property Controlling in Section | S <u>25</u> T <u>42N</u> R <u>28W</u> | <u>2</u> |
| | S <u> </u> T <u> </u> R <u> </u> | <u> </u> |
| 3. Miscellaneous Property in Sec. | S <u> </u> T <u> </u> R <u> </u> | <u> </u> |
| | S <u> </u> T <u> </u> R <u> </u> | <u> </u> |

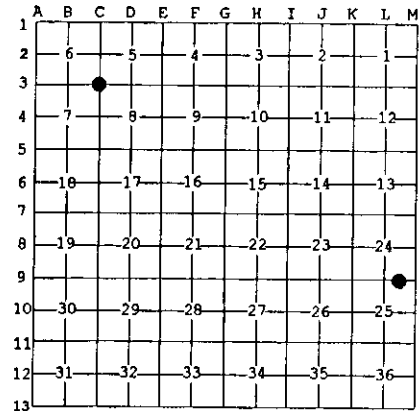
Register of Deeds Stamp & File Number

4. Lot No. _____, Recorded Plat _____
 5. Private Claims _____

Apr 18 2000

I, Stephan J. Szyszkoski, in a field survey on _____, 19____ do hereby state that under requirements of P.A. 74, Michigan P.A. of 1970, the corner points mentioned in lines 1 and 2 above were in conformance with regulations and rules therefore as required in the current manual of survey instructions of the United States Department of the Interior, Bureau of Land Management or by a decree of a Court of Law and /or that the corner points mentioned in lines 3, 4 and 5 above were in conformance with the rules of the Michigan Board of Land Surveyors or by a Decree of a Court of Law; established, re-established, monumented, recovered, found as expressed below.

NOTE: Not more than 2 corners, all in the same town and range, may be recorded on this certificate.



A. Description of original monument and accessories and/or subsequent restoration:

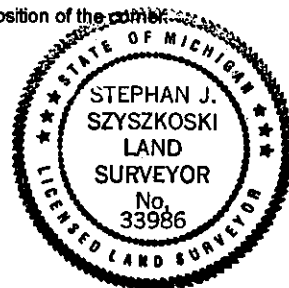
- (C3) Corner common to Sections 5-6-7-8. Remonumented in 1970 by A.O. Enger, RLS. Corner record dated 12/27/1971. 1" ID x 36" iron pipe with 4" aluminum cap. Cedar 7 S20E 44.5 links, Cedar 6 S25W 45 links, Cedar 20 N88W 83 links.
 (2-Sec. 25) East 1/16 corner between Sections 24 and 25. Established in 1962 by Billy D. Buckler, RLS. Corner record dated 1/17/63. 3/8" x 30" iron bar. 10" H. Maple S25E 05 links, 7" H. Maple N70W 11 links.

B. Description of corner evidence found and/or method applied in restoring or reestablishing corner:

- (C3) Recovered the 1970 monument, as described, a 1" ID iron pipe capped with a 4" dia. cast aluminum State of Michigan tablet, appropriately stamped, in good condition, projecting about 2 ft. above ground, at record bearing and distance from the 1970 witness trees, two of which are now stumps. The Cedar SE was recovered in good condition with blazes overgrown. Left the monument in place and marked new witnesses as described below. This corner is being recorded in order to update the accessories.
 (2-Sec. 25) Recovered the 1962 monument as described, in good condition, and at record bearing and distance from the 1962 H. Maple SE. Opened the lower blaze of this maple to expose scribing. The H. Maple NW was not recovered. Drove a 1" ID x 32" iron pipe capped with a 4" dia. cast aluminum MDNR tablet, appropriately stamped, over the top of and at the position of the iron bar and made new witnesses as described below. This corner is being recorded in order to update the accessories.

C. Description of monument for corner and accessories established to perpetuate locating the position of the corner:

- | | |
|---|---|
| (C3) Found 1" pipe with 4" alum. cap. | (2) Set 1" pipe with 4" MDNR cap. |
| Blazed and scribed the following: | Blazed and scribed the following: |
| 9" Cedar N05E 59.5' "S5 NBT" | 11" Sugar N23E 22.0' "1/16S BT" |
| 12" Cedar N58E 29.5' do | 10" Sugar S33W 36.2' do |
| 22" Cedar S71E 30.8' "S8 NBT" | 11" Sugar N45W 9.7' do |
| 8" Cedar S16E 29.5' The 1970 witness. | 12" Sugar S17E 3.2' The 1962 witness. |
| Bearings are magnetic. Distances are to notch in lower blaze. | Bearings are magnetic. Distances are to notch in lower blaze. |



Signed by Stephan J. Szyszkoski
 Surveyor's Michigan License No. 33986

Date 4/24/00

For the Michigan Department of Natural Resources - Forest Management Division