

LAND CORNER RECORDATION CERTIFICATE
Filing Requirement of Act 74, Mich. P.A. 1970

For corners in
Dickinson

(County)

Located In:

Corner Code #

| | | |
|---------------------------------------|---|-------------|
| 1. Public Land Survey | T <u>42N</u> R <u>28W</u> | <u>C8</u> |
| | T <u> </u> R <u> </u> | <u> </u> |
| | T <u> </u> R <u> </u> | <u> </u> |
| | T <u> </u> R <u> </u> | <u> </u> |
| 2. Property Controlling in Section | S <u>17</u> T <u>42N</u> R <u>28W</u> | <u>6</u> |
| | S <u> </u> T <u> </u> R <u> </u> | <u> </u> |
| 3. Miscellaneous Property in Sec. | S <u> </u> T <u> </u> R <u> </u> | <u> </u> |
| | S <u> </u> T <u> </u> R <u> </u> | <u> </u> |

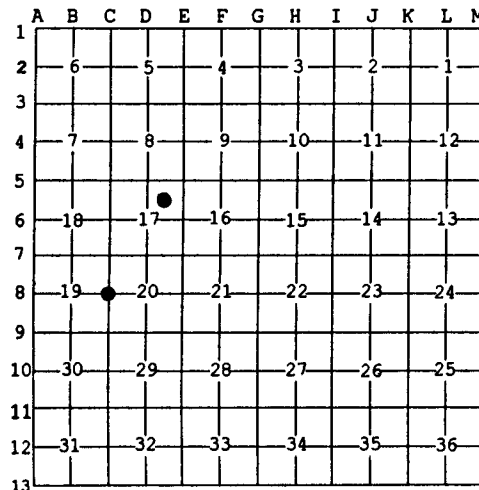
Register of Deeds Stamp & File Number

4. Lot No. _____, Recorded Plat _____
 5. Private Claims _____

C8 Jun 09 2005
 6 May 19 2005

I, Stephan J. Szyszkoski, in a field survey on _____, 19____ do hereby state that under requirements of P.A. 74, Michigan P.A. of 1970, the corner points mentioned in lines 1 and 2 above were in conformance with regulations and rules therefore as required in the current manual of survey instructions of the United States Department of the Interior, Bureau of Land Management or by a decree of a Court of Law and /or that the corner points mentioned in lines 3, 4 and 5 above were in conformance with the rules of the Michigan Board of Land Surveyors or by a Decree of a Court of Law; established, re-established, monumented, recovered, found as expressed below:

NOTE: Not more than 2 corners, all in the same town and range, may be recorded on this certificate.



A. Description of original monument and accessories and/or subsequent restoration:
 (C8) Quarter corner common to Sections 19 and 20. 1850: Established by John Burt - N6'W corrected between sections 19 & 20 ...40.00 Set cedar quarter section post. Cedar 8 S58W 7, Sugar 10 N51E 29. Found no subsequent record.
 (6-Sec. 17) Northeast 1/16 corner, Section 17. Not established in the original survey.

B. Description of corner evidence found and/or method applied in restoring or reestablishing corner:
 (C8) The original post and accessories were not recovered. Recovered ancient fence lines along the Section line between 19 and 20 north of C8 and along the E-W 1/4 line of Section 20. These fence lines, when produced to the south and west, respectively, intersect at a position which is just 4.5' south and 0.9' east of the proportionate position (midway between Section corners). Since the pattern of improvements and their location within Section 20 suggests that the section had been subdivided long ago using proper methods, I believe it likely that these fences were run according to an earlier perpetuation of C8, now destroyed by road construction. Consequently, I accept the fences as the best available evidence of the position of the original corner and monument C8 at the position of the intersection of the fence lines, produced south and west.
 (6-Sec. 17) Established the corner at the intersection of straight lines connecting opposite 1/16 corners. From the position thus established a fence corner, from which wire fencing runs north and east, is 5' east and 21' south.

C. Description of monument for corner and accessories established to perpetuate locating the position of the corner:

| | |
|---|---|
| (C8) Set 1"IDx32" I.pipe with 4" alum. MDNR cap. Set measuring nails in: 8" J.Pine N23E 58.3' wrkd "1/4S NBT" 7" J.Pine S89E 52.6' do 5" Balsam S61W 40.5' do 4" Balsam N65W 50.7' do Bearings are magnetic. Distances are to nail with tag. | (6) Set 1"IDx32" I.pipe with 4" alum. MDNR cap. Set measuring nails in: 8" Sugar S19E 15.6' wrkd "1/16S 8T" 10" triple Sugar N15E 22.9' do 12" Y.Birch S70W 15.9' do 8" Sugar N58W 46.4' do Set sq'd cedar post adjacent. Bearings are magnetic. Distances are to nail with tag. |
|---|---|



Signed by Stephan J. Szyszkoski
 Surveyor's Michigan License No. 33986

Date 7/20/05