

LAND CORNER RECORDATION CERTIFICATE
Filing Requirement of Act 74, Mich. P.A. 1970

For corners in
Dickinson

(County)

Located In:

Corner Code #

1. Public Land Survey	T 42N R 28W	D9
	T _____ R _____	_____
	T _____ R _____	_____
	T _____ R _____	_____
2. Property Controlling in Section	S 17 T 42N R 28W	8
	S _____ T _____ R _____	_____
3. Miscellaneous Property in Sec.	S _____ T _____ R _____	_____
	S _____ T _____ R _____	_____

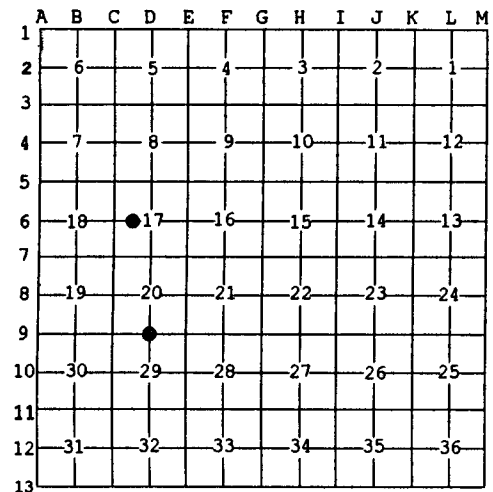
Register of Deeds Stamp & File Number

4. Lot No. _____, Recorded Plat _____
 5. Private Claims _____

8 Jun 13 2005
 D9 Jun 09 2005

I, Stephan J. Szyszkoski, in a field survey on _____, 19____ do hereby state that under requirements of P.A. 74, Michigan P.A. of 1970, the corner points mentioned in lines 1 and 2 above were in conformance with regulations and rules therefore as required in the current manual of survey instructions of the United States Department of the Interior, Bureau of Land Management or by a decree of a Court of Law and /or that the corner points mentioned in lines 3, 4 and 5 above were in conformance with the rules of the Michigan Board of Land Surveyors or by a Decree of a Court of Law; established, re-established, monumented, recovered, found as expressed below:

NOTE: Not more than 2 corners, all in the same town and range, may be recorded on this certificate.



A. Description of original monument and accessories and/or subsequent restoration:
 (D9) Quarter corner common to Sections 20 and 29. 1850: Established by John Burt - East corrected between sections 20 & 29 ...39.88 Set Spruce quarter section post. Y. Birch 16 S50E 16, Y. Birch 8 N50W 3. April 27, 1915: Mentioned in Dickinson Co. Road Commission notes " Set plug on [illegible] line at supposed 1/4 corner of 29/20. Run line north along fence corner [sic]. Sight along fence line to west and sight fence intersect north and angle is 88 deg. 32'." Also, "One 32" pine stump with a few blazes in it and Carlson said that fence corner is close enough for corner". No monument indicated.
 (8-Sec. 17) West 1/16 corner, Section 17. Not established in the original survey.

B. Description of corner evidence found and/or method applied in restoring or reestablishing corner:
 (D9) The original post and accessories were not recovered. Found no evidence of the 1915 Road Commission survey. Reestablished the corner by single proportionate measurement to the original record between Section corners 2649.38' east and west. The position for the corner lies on the east edge of Wickman Marsh Road, just south of an E-W treeline. The monument was driven to 5" below grade.
 (8-Sec. 17) Established the corner midway and on a straight line between Quarter corner 1324.38' West and Center of Section 1324.38' East.

C. Description of monument for corner and accessories established to perpetuate locating the position of the corner:

(D9) Set 1"IDx32" I.pipe with 4" alum. MDNR cap 5" below grade. Set measuring nails in: 7" Poplar S62W 32.9' mrkd "1/4S NBT" 8" R.Pine N62W 75.8' do Pole 86-24117 N21W 115.5' nail/tag Steel sign post N61E 23.6' distant. Bearings are magnetic. Distances to trees and power pole are to nail with tag.	(8) Set 1"IDx32" I.pipe with 4" alum. MDNR cap. Set measuring nails in: 6" Cedar S16E 7.7' mrkd "1/16S BT" 8" twin Cedar N58E 4.3' do 9" Cedar S76W 2.55' do 6" Cedar N46W 4.4' do Bearings are magnetic. Distances are to nail with tag.
---	--



Signed by Stephan J. Szyszkoski
 Surveyor's Michigan License No. 33986

Date 7/20/05