

E-1 E-13 T42N, R29W

LAND CORNER RECORDATION CERTIFICATE
Filing Requirement of Act 74, Mich. P.A. 1970

RECORDED

1999 NOV 30 PM 3:31

For corners in

DICKINSON (County) NORWAY TOWNSHIP

Located In: Corner Code #

- 1. Public Land Survey T 41 N R 29 W E-1
T 41 N R 29 W E-3
2. Property Controlling in Section S T R
3. Miscellaneous Property in Sec. S T R SURVEY & REMONUMENTATION

REGISTER OF DEEDS DICKINSON COUNTY RON MOORE

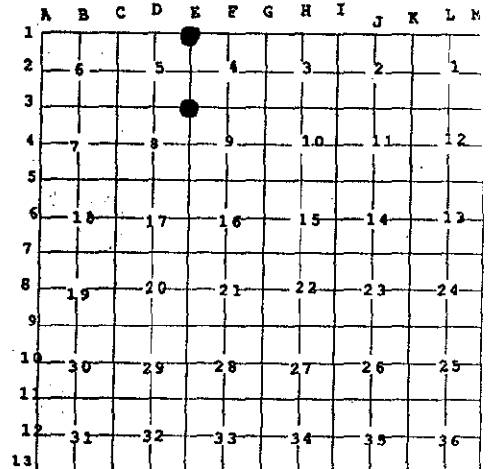
Register of Deeds Stamp & File Number

MAR 24 2000

4. Lot No. , Recorded Plat

5. Private Claims SECTION

I, JAMES H. MOORE, in a field survey on AUGUST 19, 19 99 do hereby state that under requirements of P.A. 74, Michigan P.A. of 1970, the corner points mentioned in lines 1 and 2 above were in conformance with regulations and rules therefore as required in the current manual of survey instructions of the United States Department of the Interior, Bureau of Land Management or by a decree of a Court of Law and /or that the corner points mentioned in lines 3, 4 and 5 above were in conformance with the rules of the Michigan Board of Land Surveyors or by a Decree of a Court of Law; established, re-established, monumented, recovered, found as expressed below:



NOTE: Not more than 2 corners, all in the same town and range, may be recorded on this certificate.

A. Description of original monument and accessories and/or subsequent restoration:

- E-1 CORNER COMMON TO SECTIONS 4-5 (T41N, R29W) AND SECTIONS 32-33 (T42N, R29W) CEDAR POST BY AUSTIN BURT, D.S. 1847 SPRUCE 9" N 28° E 28 LINKS CEDAR 12" N 38° W 46 LINKS
E-3 CORNER COMMON TO SECTIONS 4-5-8-9 CEDAR POST BY JOHN BURT, D.S. 1849 WHITE BIRCH 16" S 37° W 28 LINKS CEDAR 14" N 38° E 30 LINKS

B. Description of corner evidence found and/or method applied in restoring or reestablishing corner:

- E-1 FOUND 1" PIPE WITH A 4" BRASS CAP, SET BY DEAN DE LA MATER R.L.S. #13030.
E-3 FOUND 3" BRASS CAP IN 6" DIAMETER CONCRETE MONUMENT, SET BY EDWARD KAZIANKA P.S. 14765. FOUND TWO EXISTING BEARING TREES
1951 BEARING TREES: 10" CEDAR S 83° E 15 LINKS, 10" CEDAR S 18° E 31 LINKS
1966 BEARING TREES: 12" WHITE PINE N 56° E 37 1/2 LINKS, 6" MAPLE N 28° W 19 LINKS, 9" MAPLE S 25° W 27 1/2 LINKS

C. Description of monument for corner and accessories established to perpetuate locating the position of the corner:

- E-1 FOUND ABOVE DESCRIBED MONUMENT IN PLACE NEW WITNESSES: 8" CEDAR S 67° E (M.B.) 75.10' NAIL/TAG, 10" CEDAR N 77° E (M.B.) 69.84' NAIL/TAG, 11" CEDAR S 85° W (M.B.) 74.42' NAIL/TAG, 8" CEDAR N 44° W (M.B.) 93.68' NAIL/TAG, CARSONITE MARKER NORTH 0.85'
E-3 FOUND ABOVE DESCRIBED MONUMENT IN PLACE NEW WITNESSES: 12" WHITE BIRCH S 68° E (M.B.) 26.80' NAIL/TAG, 8" MAPLE N 75° E (M.B.) 19.52' NAIL/TAG, 9" MAPLE S 29° E (M.B.) 41.08' NAIL/TAG, 9" MAPLE S 80° W (M.B.) 17.23' NAIL/TAG, CARSONITE MARKER WEST 1.00'

Signed by James H. Moore Surveyor's Michigan License No. 28423

Date 11-8-99



APPROVED BY MICHIGAN STATE BOARD OF PROFESSIONAL SURVEYORS, JAN. 28, 1971 UNDER MICHIGAN PUBLIC ACT 340 OF 1990 AT A MEETING HELD ON 11-23-99

REVISOR MAY 14, 1975 REVISOR JAN., 1983 REVISOR OCT., 1995

Liber 3 PAGE 4