

MICHIGAN
DEPARTMENT OF CONSERVATION
FORESTRY DIVISION

LAND CORNER RECORD

T. 42N R. 29W

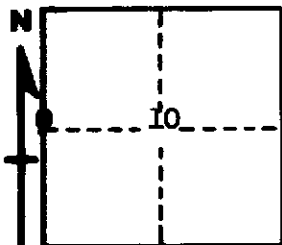
Dickinson COUNTY

DESCRIPTION OF CORNER 1/4 corner between Sections 9-10

CORNER MONUMENT 1" pipe with 4" brass cap

DATE MONUMENT PLACED AND WITNESSED 7-17-62

WITNESSES TO CORNER..... 11" Aspen (1/4 S NBT) S35°W 68 links



7" Balsam (1/4 S NBT) N44°W 47 links

AND

CIRCLE CORNER REGISTERED

DESCRIPTION IN DETAIL AS TO HOW CORNER WAS LOCATED AND IDENTIFIED OR RESTORED.

This corner was replaced from one hemlock B.T. Found scribe marks and overgrowth in good condition.
Corner found by Frank Bay, Engr. Aide I.

SURVEYOR'S SEAL

SIGNED Billy D. Buckler DATE Feb. 28, 1963
REGISTERED LAND SURVEYOR
Billy D. Buckler