

LAND CORNER RECORDATION CERTIFICATE
Filing Requirement of Act 74, Mich. P.A. 1970

For corners in
Dickinson

(County)

Located In:

Corner Code #

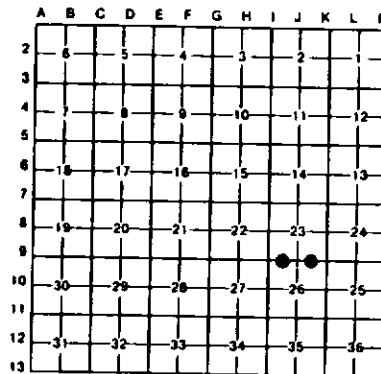
- 1. Public Land Survey
T ___ R ___
T ___ R ___
T ___ R ___
T ___ R ___
- 2. Property Controlling
in Section S 26 T 42N R29W 1
S 26 T 42N R29W 2
- 3. Miscellaneous
Property in Sec. S ___ T ___ R ___
S ___ T ___ R ___

Register of Deeds Stamp & File Number

- 4. Lot No. _____, Recorded Plat _____
- 5. Private Claims _____

I Stephan J. Szyszkoski, in a field survey on January 10, 1995, 19____, do hereby certify that under requirements of P.A. 74, Michigan P.A. of 1970, the corner points mentioned in lines 1 and 2 above were in conformance with regulations and rules therofore as required in the current manual of survey instructions of the United States Department of the Interior, Bureau of Land Management or by a decree of a Court of Law and/or that the corner points mentioned in lines 3, 4 and 5 above were in conformance with the rules of the Michigan Board of Land Surveyors or by a Decree of a Court of Law, established, re-established, monumented, re-monumented, recovered, found as expressed below.

NOTE: Not more than 4 corners, all in the same town and range, may be recorded on this certificate.



A. Description of original monument and accessories and/or subsequent restoration:

- (1-Sec. 26) West 1/16 corner between Sections 23-26. Corner not established in the original survey. Found no subsequent record.
- (2-Sec. 26) East 1/16 Corner between Sections 23-26. Corner not established in the original survey. Found no subsequent record.

B. Description of corner evidence found and/or method applied in restoring or reestablishing corner:

- (1-Sec. 26) Found no evidence of prior monumentation at the corner position. Established the corner midway and on a straight line between Section corner and quarter corner 1325.58' west and east. At the position for the corner, I placed a 1"10x32" iron pipe capped with a 4" dia. cast aluminum MDNR tablet, appropriately stamped.
- (2-Sec. 26) Found no evidence of prior monumentation at the corner position. Established the corner midway and on a straight line between Section corner and Quarter corner 1325.58' east and west. At the position for the corner, I placed a 1"10x32" iron pipe capped with a yellow plastic cap stamped "MICH DNR LS 33986".

C. Description of monument for corner and accessories established to perpetuate locating the position of the corner:

- | | |
|---|--|
| (1-Sec. 26) Set 1" iron pipe with 4" MDNR cap. Blazed and scribed the following witnesses:
14" Cedar S74N 29.6' 1/16S 8T"
11" Cedar N56W 51.5' 1/16S 8T"
12" Cedar N85E 74.1' 1/16S 8T"
8" Cedar S71E 74.4' 1/16S 8T"
Bearings are magnetic. | (2-Sec. 26) Placed a 1" iron pipe with a plastic cap. Blazed and scribed the following witnesses:
10" Maple S79W 28.6' 1/16S 8T"
5" Maple N09W 18.8' 1/16S 8T"
9" Maple N22E 30.1' 1/16S 8T"
9" Maple S51E 40.2' 1/16S 8T"
Bearings are magnetic. |
|---|--|



Signed by Stephan J. Szyszkoski Date 2-22-95
Surveyor's Michigan License No. 33986