

LAND CORNER RECORDATION CERTIFICATE
Filing Requirement of Act 74, Mich. P.A. 1970

RECORDED

1999 NOV 30 PM 3:21

For corners in

DICKINSON Located In: Corner Code #
 (County)

SAGOLA TOWNSHIP

1. Public Land Survey T 42 N R 30 W C-9
 T 42 N R 30 W C-10
 T _____ R _____
 T _____ R _____

2. Property Controlling S _____ T _____ R _____
 in Section S _____ T _____ R _____

3. Miscellaneous S _____ T _____ R _____
 Property in Sec. S _____ T _____ R _____

RECORDS SECTION
 DICKINSON COUNTY
 REGISTER OF DEEDS

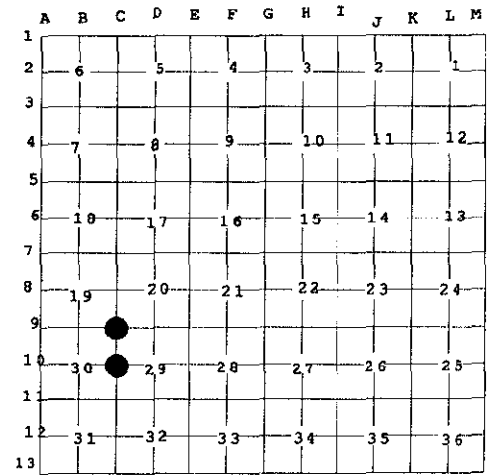
Register of Deeds Stamp & File Number

SURVEY &
 RECONSTRUCTION
 MAR 24 2000

4. Lot No. _____, Recorded Plat _____ SECTION _____

5. Private Claims _____

I, JAMES H. MOORE, in a field survey on AUGUST 16, 19 99 do hereby state that under requirements of P.A. 74, Michigan P.A. of 1970, the corner points mentioned in lines 1 and 2 above were in conformance with regulations and rules therefore as required in the current manual of survey instructions of the United States Department of the Interior, Bureau of Land Management or by a decree of a Court of Law and/or that the corner points mentioned in lines 3, 4 and 5 above were in conformance with the rules of the Michigan Board of Land Surveyors or by a Decree of a Court of Law; established, reestablished, monumented, recovered, found as expressed below:



NOTE: Not more than 2 corners, all in the same town and range, may be recorded on this certificate.

A. Description of original monument and accessories and/or subsequent restoration:

C-9 CORNER COMMON TO SECTIONS 19 - 20 - 29 - 30 CEDAR POST SET BY JOHN BURT D. S. 1849
 CEDAR 12" S 44° W 35 LINKS
 CEDAR 12" N 53° E 20 LINKS

C-10 ¼ CORNER COMMON TO SECTIONS 29 AND 30 SUGAR POST BY JOHN BURT D. S. 1849
 SUGAR 8" S 55° W 18 LINKS
 YELLOW BIRCH 14" N 42° E 35 LINKS

B. Description of corner evidence found and/or method applied in restoring or reestablishing corner:

C-9 FOUND KIMBERLY-CLARKE CORP. 4" ALUMINUM CAP SPERHAKE, RLS 7876. DATE STAMPED 7-28-60.
 1960 BEARING TREES
 MAPLE 9" N 70° W 16 ½ LINKS
 MAPLE 6" N 54° E 71 ½ LINKS
 MAPLE 7" S 18° E 15 LINKS
 MAPLE 7" S 56° N 30 ½ LINKS

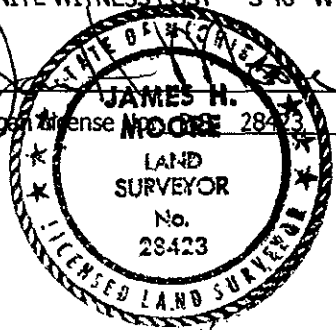
C-10 FOUND KIMBERLY-CLARKE CORP. ALUMINUM CAP SPERHAKE, RLS 7876. DATE STAMPED 8-1-60.
 1960 BEARING TREES
 YELLOW BIRCH 14" N 20° W 62 LINKS
 MAPLE 6" N 50° E 79 LINKS

C. Description of monument for corner and accessories established to perpetuate locating the position of the corner:

C-9 FOUND ABOVE MONUMENT IN PLACE NEW WITNESSES.
 FOUND 12" MAPLE S 18° E (M.B.) 9.92' NAIL/TAG
 FOUND 14" MAPLE N 65° W (M.B.) 10.60' NAIL/TAG
 12" MAPLE S 72° W (M.B.) 19.98' NAIL/TAG
 7" MAPLE N 46° E (M.B.) 10.88' NAIL/TAG
 CARSONITE WITNESS POST S 40° W (M.B.) 1.10'

C-10 FOUND ABOVE MONUMENT IN PLACE NEW WITNESSES.
 FOUND 15" YELLOW BIRCH N 16° W (M.B.) 40.65' NAIL/TAG
 5" MAPLE N 68° W (M.B.) 42.91' NAIL/TAG
 6" MAPLE S 29° W (M.B.) 38.95' NAIL/TAG
 4" MAPLE N 60° E (M.B.) 31.95' NAIL/TAG
 CARSONITE WITNESS POST N 50° E (M.B.) 1.00'

Signed by JAMES H. MOORE Date 11-8-99
 Surveyor's Michigan License No. 28423



FORM APPROVED BY MICHIGAN STATE BOARD OF PROFESSIONAL SURVEYORS, JAN. 28, 1971

ACCEPTED BY THE DICKINSON COUNTY SURVEY PEER GROUP AS THE OFFICIAL CORNER UNDER MICHIGAN PUBLIC ACT 345 OF 1990 AT A MEETING HELD ON

REVISED MAY 14, 1975
 REVISED JAN., 1983
 REVISED OCT., 1995