

MICHIGAN
DEPARTMENT OF CONSERVATION
FORESTRY DIVISION

LAND CORNER RECORD

T. 43 N. R. 27^N

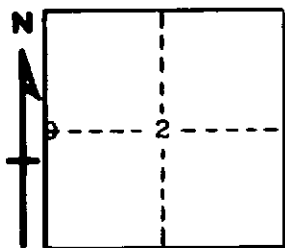
Dickinson COUNTY

DESCRIPTION OF CORNER 1/4 Corner between Secs. 2-3

CORNER MONUMENT 1" Pipe with 4" Aluminum Cap

DATE MONUMENT PLACED AND WITNESSED 11/8/63

WITNESSES TO CORNER..... 28" White Pine (1/2 S NBE) S80° W 25# Lbs.



5" Hard Maple (1/2 S NBE) S9° E 21 Lbs.

AND

CIRCLE CORNER REGISTERED

DESCRIPTION IN DETAIL AS TO HOW CORNER WAS LOCATED AND IDENTIFIED OR RESTORED.

This Corner was replaced at an old Wood Post. Found remains of one Hemlock Stump for possible B.T. Position checks with other corners in area.

SURVEYOR'S SEAL

SIGNED *Billy D. Buckler*
BILLY D. BUCKLER
REGISTERED LAND SURVEYOR

DATE 7/29/1964