

LAND CORNER RECORDATION CERTIFICATE
Filing Requirement of Act 74, Mich. P.A. 1970

For corners in

RECORDED

1998 DEC 14 PM 4:30

Dickinson Located In: Corner Code #
 (County)
 FELCH TOWNSHIP
 1. Public Land Survey T 43 N R 28 W G-10
 T ___ R ___
 T ___ R ___
 T ___ R ___
 2. Property Controlling S ___ T ___ R ___
 In Section S ___ T ___ R ___
 3. Miscellaneous S ___ T ___ R ___
 Property in Sec. S ___ T ___ R ___

4. Lot No. _____, Recorded Plat _____
 5. Private Claims _____

REGISTER OF DEEDS
 DICKINSON COUNTY
 RON MOORE, CLERK

I, James H. Moore, in a field survey on JUNE 17, 1998 do hereby state that under requirements of P.A. 74, Michigan P.A. of 1970, the corner points mentioned in lines 1 and 2 above were in conformance with regulations and rules therefore as required in the current manual of survey instructions of the United States Department of the Interior, Bureau of Land Management or by a decree of a Court of Law and for that the corner points mentioned in lines 3, 4 and 5 above were in conformance with the rules of the Michigan Board of Land Surveyors or by a Decree of a Court of Law, established, re-established, monumented, recovered, found as expressed below:

NOTE: Not more than 2 corners, all in the same town and range, may be recorded on this certificate

NOTE: SEE REVERSE SIDE FOR SECTION SUBDIVISION

A. Description of original monument and accessories and/or subsequent restoration:

ORIGINAL CORNER ESTABLISHED BY J. BURT - SEPT., 1850

ORIGINAL CORNER: WOOD POST

ORIGINAL BEARING TREES:

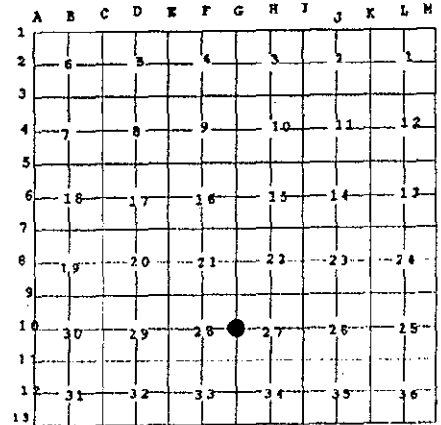
- YELLOW PINE 24" S 46° W 19 LINKS (12.54 feet)
- YELLOW PINE 20" N 37° E 6 LINKS (3.96 feet)

SURVEY &
 REMONUMENTATION

MAR 26 1999

SECTION

ACCEPTED BY THE DICKINSON COUNTY SURVEY PEER GROUP AS THE OFFICIAL CORNER UNDER MICHIGAN PUBLIC ACT 345 OF 1990 AT A MEETING HELD ON 12-7-98
R.F.P.
 COUNTY REPRESENTATIVE



B. Description of corner evidence found and/or method applied in restoring or reestablishing corner:

NO ORIGINAL EVIDENCE WAS FOUND.

CORNER WAS CONSIDERED TO BE LOST AND CORNER WAS SET AND MONUMENTED AT A SINGLE PROPORTIONATE LOCATION BETWEEN GOVT CORNERS (G-9 & G-11).

C. Description of monument for corner and accessories established to perpetuate locating the position of the corner:

AT THE SINGLE PROPORTIONATE LOCATION I SET A 1" x 36" ALUMINUM ROD WITH A DICKINSON COUNTY ALUMINUM CAP, FROM WHICH I ESTABLISHED THE FOLLOWING NEW

BEARING TREES:

(all measurements taken to nail set in tree)

- MAPLE 6" N 60° E 12.81 feet
- MAPLE 6" S 22° E 10.38 feet
- MAPLE 5" S 55° W 20.77 feet
- MAPLE 4" N 67° W 12.80 feet
- CARSONITE RAIL NORTH 0.85 feet



=Signed by James H. Moore

Date 11-30-98

Surveyor's Michigan License No. P.S. 28423

Liber 2 Page 478

