

STATE OF MICHIGAN
DEPARTMENT
OF
NATURAL RESOURCES

LAND CORNER RECORD

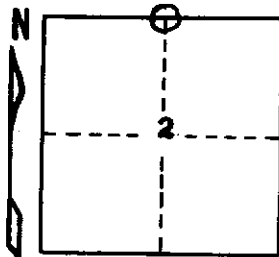
Dickinson COUNTY
T 43-44N R 28W

DESCRIPTION OF CORNER 1/4 corner between Sections 2 and 35

CORNER MONUMENT 1" I.D. x 36" iron pipe with 4" aluminum cap.

DATE MONUMENT PLACED AND WITNESSED October 21, 1969

WITNESSES TO CORNER..... B. Spruce 4 S80°E 22 lks. "1/4S, NBT"



B. Spruce 6 S74°W 10 lks. "1/4S, NBT"

B. Spruce 5 N35°W 15 lks. "1/4S, NBT"

AND

CIRCLE CORNER REGISTERED

DESCRIPTION IN DETAIL AS TO HOW CORNER WAS LOCATED AND IDENTIFIED OR RESTORED.

Found a squared wood post North 38 lks. and a 5" B. Spruce blazed on 4 sides N56°E 4 1/2 lks. from corner, for approximate corners. Corner re-established 40.00 ch. west of original section corner 1, 2, 35, and 36, T43-44N, R 28W on line between that corner and original township corner T43-44N, R28-29W.

SURVEYOR'S SEAL

DISTRIBUTION:

SIGNED

Arthur O. Enger
REGISTERED LAND SURVEYOR
Arthur O. Enger

DATE January 31, 1972

County Courthouse
Area Forester (Regions I & II)
District or Region Surveyor
Forestry Div., Lansing

R 4047
Rev. 10/68