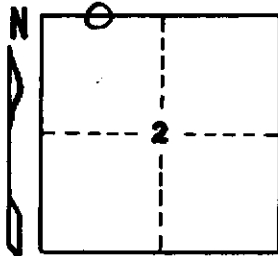


STATE OF MICHIGAN
DEPARTMENT
OF
NATURAL RESOURCES

LAND CORNER RECORD

Dickinson COUNTY
T 43-44N R 28W

DESCRIPTION OF CORNER West 1/16 corner between Sections 2 and 35
CORNER MONUMENT 1" I.D. x 36" iron pipe with 4" aluminum cap.
DATE MONUMENT PLACED AND WITNESSED October 21, 1969
WITNESSES TO CORNER..... (No trees available for witnesses)



AND

CIRCLE CORNER REGISTERED

DESCRIPTION IN DETAIL AS TO HOW CORNER WAS LOCATED AND IDENTIFIED OR RESTORED.

Corner established 60.00 ch. west of original section corner 1, 2, 35, and 36, T43-44N, R28W on line between that corner and the original township corner of T43-44N, R28-29W. Corner lies 4.67 ch. west of a swamp edge noted in original field notes as being 5.00 ch. east of this corner. Corner is in a large upland clearing. No evidence that the corner had been established previously.

SURVEYOR'S SEAL

SIGNED

Arthur O. Enger
REGISTERED LAND SURVEYOR

DATE February 1, 1972

DISTRIBUTION:

County Courthouse
Area Forester (Regions I & II)
District or Region Surveyor
Forestry Div., Lansing

Arthur O. Enger

R 4047
Rev. 10/68