

STATE OF MICHIGAN
DEPARTMENT
OF
NATURAL RESOURCES

LAND CORNER RECORD

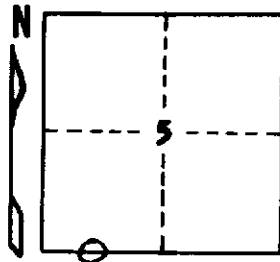
Dickinson COUNTY
T 43 N R 28 W

DESCRIPTION OF CORNER West 1/16 corner between Sections 5 and 8

CORNER MONUMENT 4"x4"x5 1/2" green cedar post scribed "W1/16, 5, 8"

DATE MONUMENT PLACED AND WITNESSED September 23, 1969

WITNESSES TO CORNER..... Cedar 10 N58°E 31 1/2 lks. "1/16S, BT"



Cedar 9 S32°E 33 1/2 lks. "1/16S, BT"

AND

CIRCLE CORNER REGISTERED

DESCRIPTION IN DETAIL AS TO HOW CORNER WAS LOCATED AND IDENTIFIED OR RESTORED.

Found a balsam with blazes on 4 sides N76 1/2°E 13 lks. for an approximate corner. Corner established on line between section corner 20.064 ch. west and 1/4 corner 20.064 ch. east. Found a stream 2 lks wide course SSW which corresponds to a "stream 5 lks. e SW" described in original field notes as being 60.12 ch. west of Sec. Cor. 4, 5, 8, and 9.

SURVEYOR'S SEAL

DISTRIBUTION:

SIGNED

Arthur O. Enger
REGISTERED LAND SURVEYOR
Arthur O. Enger

DATE

February 1, 1972

County Courthouse
Area Forester (Regions I & II)
District or Region Surveyor
Forestry Div., Lansing

R 4047
Rev. 10/68