

STATE OF MICHIGAN  
DEPARTMENT  
OF  
NATURAL RESOURCES

LAND CORNER RECORD

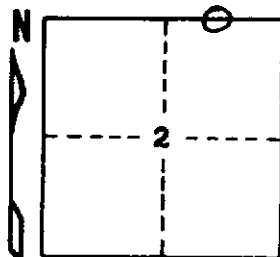
Dickinson COUNTY  
T 43-44N R 28W

DESCRIPTION OF CORNER East 1/16 corner between Sections 2 and 35

CORNER MONUMENT 1" I.D. x 36" iron pipe with 4" aluminum cap.

DATE MONUMENT PLACED AND WITNESSED October 22, 1969

WITNESSES TO CORNER..... B. Spruce 4 N71 $\frac{1}{2}$ <sup>o</sup>E (mag.) 17 $\frac{1}{2}$  lks. "1/16S, BT"



B. Spruce 5 N2<sup>o</sup>E (mag.) 37 $\frac{1}{2}$  lks. "1/16S, BT"

AND

CIRCLE CORNER REGISTERED

DESCRIPTION IN DETAIL AS TO HOW CORNER WAS LOCATED AND IDENTIFIED OR RESTORED.

Found a dead 6" tamarack blazed on 4 sides N74W 81 lks. for an approximate corner. Corner established on line between section corner 20.00 ch. east and 1/4 corner 20.00 ch. west.

SURVEYOR'S SEAL

DISTRIBUTION:

SIGNED

*Arthur O. Enger*  
REGISTERED LAND SURVEYOR  
Arthur O. Enger

DATE

February 3, 1972

County Courthouse  
Area Forester (Regions I & II)  
District or Region Surveyor  
Forestry Div., Lansing

R 4047  
Rev. 10/68