

LAND CORNER RECORDATION CERTIFICATE
Filing Requirement of Act 74, Mich. P.A. 1970

For corners in

Dickinson
 (County)

Located In:

Corner Code #

1. Public Land Survey	T <u>43N</u> R <u>28W</u>	<u>EB</u>
	T <u> </u> R <u> </u>	<u> </u>
	T <u> </u> R <u> </u>	<u> </u>
	T <u> </u> R <u> </u>	<u> </u>
2. Property Controlling in Section	S <u>28</u> T <u>43N</u> R <u>28W</u>	<u>1</u>
	S <u> </u> T <u> </u> R <u> </u>	<u> </u>
3. Miscellaneous Property in Sec.	S <u> </u> T <u> </u> R <u> </u>	<u> </u>
	S <u> </u> T <u> </u> R <u> </u>	<u> </u>

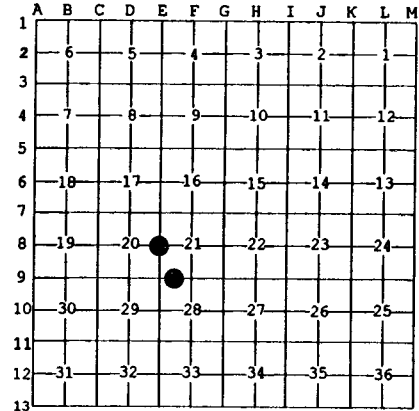
Register of Deeds Stamp & File Number

4. Lot No. _____, Recorded Plat _____
 5. Private Claims _____

1 May 29 2001
 EB Jun 06 2001

I, Stephan J. Szyszkoski, in a field survey on _____, 19____ do hereby state that under requirements of P.A. 74, Michigan P.A. of 1970, the corner points mentioned in lines 1 and 2 above were in conformance with regulations and rules therefore as required in the current manual of survey instructions of the United States Department of the Interior, Bureau of Land Management or by a decree of a Court of Law and /or that the corner points mentioned in lines 3, 4 and 5 above were in conformance with the rules of the Michigan Board of Land Surveyors or by a Decree of a Court of Law, established, re-established, monumented, recovered, found as expressed below:

NOTE: Not more than 2 corners, all in the same town and range, may be recorded on this certificate.



A. Description of original monument and accessories and/or subsequent restoration:
 (EB) Quarter corner common to Sections 20-21. Remonumented in the original position from two W.Pine 08T stumps by Billy D. Buckler RLS in 1962. 1" pipe with 4" aluminum cap. 12" B.Ash N37W 57 links, 5" B.Ash N62E 93 links.
 (1-Sec. 28) West 1/16 corner between sections 21-28. Established in 1963 by Billy D. Buckler RLS midway and on line between Section and Quarter corners. 1" iron pipe with 4" aluminum cap and wood post. 7" B.Spruce N78W 12 links, 9" Cedar S65E 27.5 links.

B. Description of corner evidence found and/or method applied in restoring or reestablishing corner:

(EB) Recovered the 1962 monument as described, firmly set, in good condition, and at record bearing and distance from the decayed burned remains of the original BT W.Pine N11W noted in Buckler's record, and from the two 1962 NBTs. It appears that the distances to these two trees were transposed on the record. Both B.Ash NBTs are now down with scribing visible on the NW and blazes visible on the stump and bole of that NE. Left the monument in place and made new witnesses as described below. The edge of the Ford River is 32' S'yly. OH power lines are 11' SE'yly.
 (1-Sec. 28) Recovered the 1963 monument as described, in good condition, and at record bearing and distance from the two witness trees. The Cedar is in good condition with scribing visible, and the Spruce is dead and down. Left the monument in place and marked new witnesses as described below.

C. Description of monument for corner and accessories established to perpetuate locating the position of the corner:

(EB) Found 1" ID iron pipe with 4" alum. MDOC cap. Blazed and scribed:	(1) Found 1" ID iron pipe with 4" alum. MDOC cap. Blazed and scribed:
15" B.Ash S88E 44.8' "1/4S NBT"	17" Cedar S09W 80.8' "1/16S BT"
7" B.Ash S53E 33.3' do	7" Cedar N31W 42.7' do
13" B.Ash N79W 34.2' do	10" Cedar N21E 30.1' do
18" W.Spruce N7W 50.0' do	11" Cedar S69E 18.4' (the 1963 NBT)
Sq'd cedar post adjacent. Bearings are magnetic. Distances are to notch in lower blaze.	Sq'd cedar post adjacent. Bearings are magnetic. Distances are to notch in lower blaze.



Signed by Stephan J. Szyszkoski
 Surveyor's Michigan License No. 33986

Date 8/8/01

For the Michigan Department of Natural Resources - Forest Management Division