

**LAND CORNER RECORDATION CERTIFICATE**  
**Filing Requirement of Act 74, Mich. P.A. 1970**

For corners in  
Dickinson  
 (County)

Located In:	Corner Code #
1. Public Land Survey	T 43N R 28W F9
	T R
	T R
	T R
2. Property Controlling in Section	S 28 T 43N R 28W 3
	S T R
3. Miscellaneous Property in Sec.	S T R
	S T R

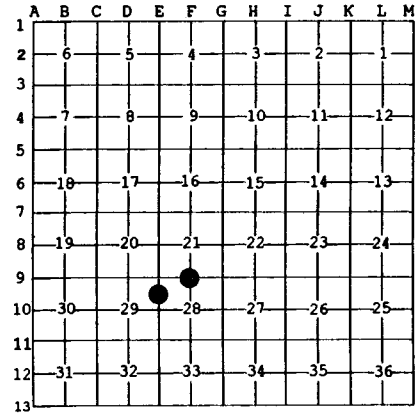
Register of Deeds Stamp & File Number

4. Lot No. \_\_\_\_\_, Recorded Plat \_\_\_\_\_  
 5. Private Claims \_\_\_\_\_

May 29 2001

I, Stephan J. Szyszkoski, in a field survey on \_\_\_\_\_, 19\_\_\_\_ do hereby state that under requirements of P.A. 74, Michigan P.A. of 1970, the corner points mentioned in lines 1 and 2 above were in conformance with regulations and rules therefore as required in the current manual of survey instructions of the United States Department of the Interior, Bureau of Land Management or by a decree of a Court of Law and/or that the corner points mentioned in lines 3, 4 and 5 above were in conformance with the rules of the Michigan Board of Land Surveyors or by a Decree of a Court of Law; established, re-established, monumented, recovered, found as expressed below:

**NOTE:** Not more than 2 corners, all in the same town and range, may be recorded on this certificate.



**A. Description of original monument and accessories and/or subsequent restoration:**

(F9) Quarter corner common to Sections 21-28. Reestablished in 1963 by Billy D. Buckler RLS, midway between Section corners. 1" Iron pipe with 4" aluminum cap and wood post. 7" Cedar S07E 13 links, 5" Balsam S74W 3.5 links.  
 (3-Sec. 28) North 1/16 corner between Sections 28 and 29. Established in 1963 by Billy D. Buckler. 1" iron pipe with 4" aluminum cap and wood post. 5" Maple N75W 34 links, 6" Maple N33E 47 links.

**B. Description of corner evidence found and/or method applied in restoring or reestablishing corner:**

(F9) Recovered the 1963 monument, disturbed, laying on the ground. Remonumented the corner at record bearing and distance from the two 1963 NBTs: the Cedar in good condition with overgrown blazes, and the Balsam, dead and down with blazes and scribing visible.  
 (3-Sec. 28) Recovered the 1963 monument as described, in good condition, and at record bearing and distance from the 1963 NBTs. The Maple NW is green with overgrown blazes, the Maple NE is now a decaying stump. Left the monument in place and made new witnesses as described below.

**C. Description of monument for corner and accessories established to perpetuate locating the position of the corner:**

(F9) Set 1" ID iron pipe with plastic cap "MICH DNR PS33986". Blazed and scribed:	(3) Found 1" ID iron pipe with 4" alum. MDOC cap. Blazed and scribed:
20" Cedar S54W 9.5' "1/4S NBT"	12" Oak S02E 33.2' "1/16S BT"
12" Cedar N53W 31.2' do	7" triple Y. Birch N27E 29.1' do
10" Spruce N70E 12.0' do	7" Sugar N17W 34.2' do
Cedar S07E 8.6' (the 1963 NBT)	11" Maple N70W 22.45' (1963 NBT)
Sq'd cedar post adjacent. Bearings are magnetic. Distances to notch in lower blaze.	Sq'd cedar post adjacent. Bearings are magnetic. Distances are to notch in lower blaze.



Signed by Stephan J. Szyszkoski  
 Surveyor's Michigan License No. 33986

Date 8/8/01

For the Michigan Department of Natural Resources - Forest Management Division