

STATE OF MICHIGAN
DEPARTMENT
OF
NATURAL RESOURCES

LAND CORNER RECORD

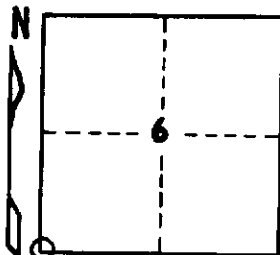
Dickinson COUNTY
T 43N R 28-29W

DESCRIPTION OF CORNER Section corner 1, 6, 7, and 12

CORNER MONUMENT 1" I.D. x 36" iron pipe with 4" aluminum cap

DATE MONUMENT PLACED AND WITNESSED June 19, 1969

WITNESSES TO CORNER..... Black Spruce 5 N17 $\frac{1}{2}$ ^oE 22 $\frac{1}{2}$ links "S 6 NBT"



Black Spruce 5 S56^oW 10 links "S12 NBT"

Black Spruce 5 S40^oE 14 links "S 7 NBT"

AND

CIRCLE CORNER REGISTERED

DESCRIPTION IN DETAIL AS TO HOW CORNER WAS LOCATED AND IDENTIFIED OR RESTORED.

Monument set by proportionate measurement on line between an original 1/4 corner 40.05 chains south and an original township corner 78.85 chains north. Found no evidence of the original monument or its accessories or of any replacement monument or accessories. Corner position checks with swamp edge 2.50 chains north.

SURVEYOR'S SEAL

DISTRIBUTION:

SIGNED

Arthur O. Enger
REGISTERED LAND SURVEYOR

DATE

2/26/70

County Courthouse
Area Forester (Regions I & II)
District or Region Surveyor
Forestry Div., Lansing

R 4047
Rev. 10/68