

LAND CORNER RECORDATION CERTIFICATE
Filing Requirement of Act 74, Mich. P.A. 1970

For corners in
Dickinson

(County)	Located In:	Corner Code #
1. Public Land Survey	T 43N R 29W	K5
	T 43N R 29W	11
	T 43N R 29W	61
	T _____ R _____	
2. Property Controlling in Section	S _____ T _____ R _____	
	S _____ T _____ R _____	
	S _____ T _____ R _____	
3. Miscellaneous Property in Sec.	S _____ T _____ R _____	
	S _____ T _____ R _____	

Register of Deeds Stamp & File Number

4. Lot No. _____, Recorded Plat _____
 5. Private Claims _____

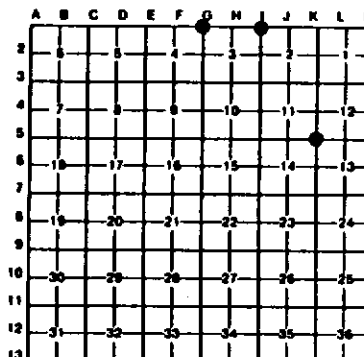
61 February 02, 1994

11 November 23, 1993

K5 November 23, 1993

I, Stephan J. Szyszkoski, in a field survey on K5 November 23, 1993, 19_____, do hereby certify that under requirements of P.A. 74, Michigan P.A. of 1970, the corner points mentioned in lines 1 and 2 above were in conformance with regulations and rules therefore as required in the current manual of survey instructions of the United States Department of the Interior, Bureau of Land Management or by a decree of a Court of Law and/or that the corner points mentioned in lines 3, 4 and 5 above were in conformance with the rules of the Michigan Board of Land Surveyors or by a Decree of a Court of Law, established, re-established, monumented, re-monumented, recovered, found as expressed below.

NOTE: Not more than 4 corners, all in the same town and range, may be recorded on this certificate.



A. Description of original monument and accessories and/or subsequent restoration:

(K5) Section corner common to Sections 11-12-13-14. Corner previously monumented in 1956 by Henry S. Peterson and recorded as follows: Placed 1" pipe with 4" brass cap from two probable original W. Pine bearing trees. NBT White pine stump 25" N12E 28.5 links. Found no subsequent record.

(11) Corner common to Sections 2-3 T43N-R29W and 34-35 T44N-R29W. Corner reestablished by proportionate measurement in 1956 by Billy D. Buckler and recorded as follows: Placed 1" pipe with 4" brass cap. 8" Aspen N49W 33 links, 8" Aspen S30W 41 links. Found no subsequent record.

(61) Corner common to Sections 3-4 T43N-R29W and 33-34 T44N-R29W. Corner monumented in 1957 by Billy D. Buckler. Recorded as follows: Placed 1" pipe with 4" brass cap. Found 3 old cedar stakes in place. Found remains of several stump bottoms in proper location. NBTs - 8" Cedar N25E 15 links, 10" Cedar S30W 17 links. Found no subsequent record.

B. Description of corner evidence found and/or method applied in restoring or reestablishing corner:

(K5) Found and accepted 1" pipe with 4" Michigan Dept. of Conservation brass cap placed by Peterson at record bearing and distance from the 1956 witness White Pine stumps, markings no longer visible. Original call to enter swamp East 0.25 ch. checks. Marked 4 new bearing trees as described below.

(11) Found and accepted 1" pipe with 4" brass Michigan Dept. of Conservation cap. Found no trace of 1956 Aspen NBTs. Monument is in good condition. Marked 4 new bearing trees as described below.

(61) Found monument placed by Buckler tipped over to north by a fallen tree. Reset the monument to a vertical position and at record bearing and distance from the remaining NBT - a 13" Cedar S30W (using 1957 declination) 17 links in good condition with markings plain. The second NBT is now a windthrow. Marked 3 new bearing trees as described below.

C. Description of monument for corner and accessories established to perpetuate locating the position of the corner:

(K5) Found 1" pipe with 4" brass cap. Blazed and scribed the following new bearing trees:

7" B. Pine S79W 33.7' "614 NBT"
 14" B. Pine S50W 45.7' "611 NBT"
 7" Triple Maple N77E 9.7' "612 NBT"
 8" Ash S37E 21.8' "613 NBT"
 Bearings are magnetic

(11) Found 1" pipe with 4" brass cap. Blazed and scribed the following new bearing trees:

7" Maple N60W 7.8' "634 NBT"
 8" Twin Maple S17W 11.4' "63 NBT"
 12" Maple S20E 25.6' "62 NBT"
 4" Aspen N53E 25.3' "635 NBT"
 Bearings are magnetic.

(61) Found 1" pipe with 4" brass cap. Blazed and scribed the following new bearing trees:

14" Cedar N11W 15.2' "633 NBT"
 12" Cedar S88E 18.7' "634 NBT"
 14" Cedar S46E 23.5' "63 NBT"
 Bearings are magnetic

Signed by

Stephan J. Szyszkoski

Date

7-14-94

Surveyor's Michigan License No.

33926

