

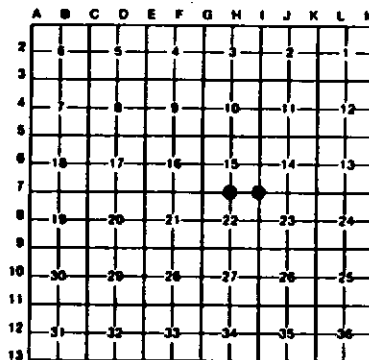
LAND CORNER RECORDATION CERTIFICATE
Filing Requirement of Act 74, Mich. P.A. 1970

For corners in
Wickinson

(County)	Located In:	Corner Code //
1. Public Land Survey	T 43N R 29W	17
	T 43N R 29W	27
	T _____ R _____	_____
	T _____ R _____	_____
2. Property Controlling in Section	S _____ T _____ R _____	_____
	S _____ T _____ R _____	_____
3. Miscellaneous Property in Sec.	S _____ T _____ R _____	_____
	S _____ T _____ R _____	_____

Register of Deeds Stamp & File Number

4. Lot No. _____, Recorded Plat _____
 5. Private Claims _____



I, Stephen J. Szyszkoski, in a field survey on April 20, 1994, 19_____, do hereby certify that under requirements of P.A. 74, Michigan P.A. of 1970, the corner points mentioned in lines 1 and 2 above were in conformance with regulations and rules therefore as required in the current manual of survey instructions of the United States Department of the Interior, Bureau of Land Management or by a decree of a Court of Law and/or that the corner points mentioned in lines 3, 4 and 5 above were in conformance with the rules of the Michigan Board of Land Surveyors or by a Decree of a Court of Law, established, re-established, monumented, re-monumented, recovered, found as expressed below:

NOTE: Not more than 4 corners, all in the same town and range, may be recorded on this certificate.

A. Description of original monument and accessories and/or subsequent restoration:

(17) Section corner common to Sections 15-14-23-22. Original corner established in 1848 by Harvey Mellen and recorded as follows: Set ironwood post in Southwest side of gentle rising hill 60 feet high. Lynn 10 S30E 33, Hemlock 14 N79W 45. The record shows: 1) South 40.00 chains 1/4 corner, 2) West 40.25 chains 1/4 corner, 3) East 120.20 chains 1/4 corner, 4) North 27.00 chains, Foot of descent 100' E-W. Found no subsequent record.

(N7) Quarter corner common to Sections 15-22. Corner established in 1848 by Harvey Mellen as follows: Set sugar post, Sugar 8 S64E 13, Sugar 12 N79W 30. Original record shows: 1) east 4.5 ch. White Pine 20, 2) east 9.15 ch. stream S C. NW, 3) east 40.25 ch. Section corner. Found no subsequent record.

B. Description of corner evidence found and/or method applied in restoring or reestablishing corner:

(17) Monumented the corner at the original position at record bearing and distance from the remains of the two original bearings trees: a Hemlock windthrow N79W 45 links, and a Lynn stump hole with root holes plain S30E 33 links. Corner falls on hillside as described in the original record. The record referenced above checks as follows: 1) South 40.195 ch. to original corner, 2) West 40.282 ch. to original corner, 3) East 120.045 ch. to original corner, 4) north 27.0 ch. to foot as described. At the position for the corner, I placed a 1" I.D. x 32" iron pipe capped with a 4" dia. cast aluminum MDNR tablet, appropriately stamped.

(N7) Monumented the corner at record bearing and distance from the windthrow mound remains of the original sugar BT S64E 13 links. The record referenced above checks as follows: 1) east 4.50 ch. found W. pine stump of proper size on section line. No markings visible., 2) checks, 3) 40.282 ch. to an original corner. The corner falls 8.0' north of a straight line between adjacent section corners. It appears, however, that a chainage error was made in the original survey of the 1/2 mile to the west of this corner, it being 1.023 ch. longer than the record. At the position for the corner, I placed a 1" I.D. x 32" iron pipe capped with a 4" dia. cast aluminum MDNR tablet, appropriately stamped.

C. Description of monument for corner and accessories established to perpetuate locating the position of the corner:

(17) Set 1" pipe with 4" MDNR cap. Blazed and scribed the following new bearing trees:

11" Sugar N29W 6.5' "S15 NBT"
 6" Sugar N44E 14.1' "S14 NBT"
 7" Sugar S06E 30.9' "S23 NBT"
 12" Sugar S10W 17.9' "S22 NBT"

Bearings are magnetic. Corner falls in a sugar-basswood stand.

(N7) Set 1" pipe with 4" MDNR cap. Blazed and scribed the following new bearing trees:

5" Spruce N58E 15.0' "1/4S NBT"
 8" Maple S74E 39.2' "1/4S NBT"
 6" W. Pine S70W 61.9' "1/4S NBT"
 5" W. Pine N30W 37.0' "1/4S NBT"

Placed a 3" squared spruce post adjacent. Bearings are magnetic.



Signed by Stephen J. Szyszkoski Date 7-16-94
 Surveyor's Michigan License No. 33986