

LAND CORNER RECORDATION CERTIFICATE
Filing Requirement of Act 74, Mich. P.A. 1970

For corners in
Dickinson
(County)

Located In: Corner Code #/

1. Public Land Survey T 43N R 29W J5
T 43N R 29W 67
T _____ R _____
T _____ R _____

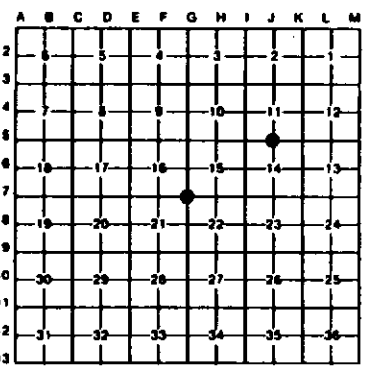
2. Property Controlling S _____ T _____ R _____
in Section S _____ T _____ R _____

3. Miscellaneous S _____ T _____ R _____
Property in Sec. S _____ T _____ R _____

Register of Deeds Stamp & File Number

4. Lot No. _____, Recorded Plat _____

5. Private Claims _____



I, Stephan J. Szyszkoski, in a field survey on 25 April 21, 1994, 19____, do hereby certify that under requirements of P.A. 74, Michigan P.A. of 1970, the corner points mentioned in lines 1 and 2 above were in conformance with regulations and rules therefore as required in the current manual of survey instructions of the United States Department of the Interior, Bureau of Land Management or by a decree of a Court of Law and/or that the corner points mentioned in lines 3, 4 and 5 above were in conformance with the rules of the Michigan Board of Land Surveyors or by a Decree of a Court of Law; established, re-established, monumented, re-monumented, recovered, found as expressed below:

NOTE: Not more than 4 corners, all in the same town and range, may be recorded on this certificate.

A. Description of original monument and accessories and/or subsequent restoration:

(J5) Quarter corner common to Sections 11-14. Original corner established in 1848 by Harvey Mellon as follows: Set Henlock post White Pine 20 S41E 35, White Pine 18 N55W 10. Original line notes east between 11-14 show: 1) 11.00 top of granite knob 15' high, ...2) 38.75 Leave bottom C. ENE, 3) 40.22 1/4 corner, 4) 44.71 W. Pine 20, 5) 46.00 Enter bottom ESE, 6) 46.75 Stream 35 C. east. line in stream...7) 00.44 Section corner. Found no subsequent record.

(G7) Section corner common to Sections 15-16-21-22. Original corner established in 1848 by Harvey Mellon as follows: Set cedar post. Yellow Birch 24 N43E 12, Cedar 18, S72W 17. Original line notes show: South 6.25 ch. Stream 4 course NW, and West 2.29 chains Stream 4 course North. Found no subsequent record.

B. Description of corner evidence found and/or method applied in restoring or reestablishing corner:

(J5) Monumented the corner at record bearing and distance from the remains of the original bearing trees, W. Pine stump bottoms of proper size S41E 35 links, and N55W 10 links. The original record referenced above was found as follows: 1) checks, 2) checks, 3) 40.237 to corner herein described, 4) 44.727 to stump remains of line tree, proper size, no markings visible, 5) checks, 6) checks, 7) 00.373 to original corner. At the position for the corner, I placed a 1" I.D. x 32" iron pipe capped with a 4" dia. cast aluminum MDNR tablet, appropriately stamped.

(G7) Original monument and accessories not recovered. Monumented the corner at record distance north and east of the stream crossings noted above. Both streams are as described in the original record. From the corner thus determined, distances north, west, and south check well with the original record. There appears to be a chainage error in the original measure for the 1/2 mile to the east of this corner, it being found to be 1.023 ch. longer than record to an original corner at 1/4 15-22. At the position for the corner, I placed a 1" I.D. x 32" iron pipe capped with a 4" dia. cast aluminum MDNR tablet, appropriately stamped. Found a forester's post N59E 62' from the corner.

C. Description of monument for corner and accessories established to perpetuate locating the position of the corner:

(J5) Set 1" pipe with 4" MDNR cap. Blazed and scribbled the following new bearing trees:
3" Spruce S43W 44.0' 1/4S NBT
6" Spruce N31W 53.5' 1/4S NBT
6" Spruce N30E 45.0' 1/4S NBT
4" Spruce S78E 45.0' 1/4S NBT
Squared a 5" Aspen S20E 2.7'
Bearings are magnetic.

(G7) Set 1" pipe with 4" MDNR cap. Blazed and scribbled the following new bearing trees:
6" Sugar S03W 27.1' S21 NBT
7" Sugar N70W 19.7' S16 NBT
6" Sugar N26W 28.1' S10 NBT
7" Sugar N72E 13.9' S15 NBT
Set a 4" squared cedar post adjacent.
Bearings are magnetic.



Signed by Stephan J. Szyszkoski Date 7-14-94
Surveyor's Michigan License No. 33986