

LAND CORNER RECORDATION CERTIFICATE
Filing Requirement of Act 74, Mich. P.A. 1970

For corners in Dickinson (County)	Located In:	Corner Code #
1. Public Land Survey	T ___ R ___	_____
	T ___ R ___	_____
	T ___ R ___	_____
	T ___ R ___	_____
2. Property Controlling in Section	S 15 T 43N R 29W	10
	S 22 T 43N R 29W	3
3. Miscellaneous Property in Sec.	S 14 T 43N R 29W	1
	S ___ T ___ R ___	_____

Register of Deeds Stamp & File Number

4. Lot No. _____ Recorded Plat _____
5. Private Claims _____

1 May 05, 1994
3 May 02, 1994

I, Stephan J. Szyszkoski, in a field survey on 10 April 20, 1994, 19____, do hereby certify that under requirements of P.A. 74, Michigan P.A. of 1970, the corner points mentioned in lines 1 and 2 above were in conformance with regulations and rules therefore as required in the current manual of survey instructions of the United States Department of the Interior, Bureau of Land Management or by a decree of a Court of Law and/or that the corner points mentioned in lines 3, 4 and 5 above were in conformance with the rules of the Michigan Board of Land Surveyors or by a Decree of a Court of Law, established, re-established, monumented, re-monumented, recovered, found as expressed below:

NOTE: Not more than 4 corners, all in the same town and range, may be recorded on this certificate.

A. Description of original monument and accessories and/or subsequent restoration:

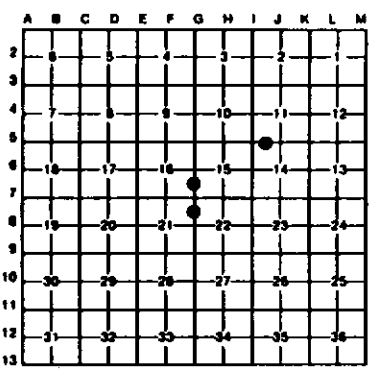
- (10-Sec.15) South 1/10 corner between Sections 15-16. Corner not established in the original survey. Found no subsequent record.
- (3-Sec.22) North 1/10 corner between Sections 21-22. Corner not established in the original survey. Found no subsequent record.
- (1-Sec.14) West 1/10 corner between Sections 11-14. Corner not established in the original survey. Found no subsequent record.

B. Description of corner evidence found and/or method applied in restoring or reestablishing corner:

- (10-Sec.15) Found no evidence of prior monumentation at the corner position. Established the corner on a straight line between Quarter corner 1320.07' north and Section corner 1320.07' south. At the position for the corner, I placed a 1" I.D. x 32" iron pipe capped with a 4" dia. cast aluminum MGNR tablet, appropriately stamped.
- (3-Sec. 22) Found no evidence of prior monumentation at the corner position. Established the corner on a straight line between Section corner 1323.57' North and Quarter corner 1323.57' South. At the position for the corner, I placed a 1" I.D. x 32" iron pipe capped with a 4" dia. cast aluminum MGNR tablet, appropriately stamped.
- (1-Sec.14) Found no evidence of prior monumentation at the corner position. Established the corner on a straight line between Section corner 1327.02' West and Quarter corner 1327.02' East. At the position for the corner, I placed a 1" I.D. x 32" iron pipe capped with a 4" dia. cast aluminum MGNR tablet, appropriately stamped.

C. Description of monument for corner and accessories established to perpetuate locating the position of the corner:

- | | | |
|--|---|---|
| (10) Set 1" pipe with 4" MGNR cap. Blazed and scribed the following bearing trees:
12" Cedar S83W 91.0' 1/10S BT
7" Cedar N80W 89.3' 1/10S BT
7" Cedar N02E 52.3' 1/10S BT
10" Cedar S11E 72.0' 1/10S BT
Set a 8" squared cedar post adjacent. Corner falls in a clearcut. Bearings are magnetic. | (3) Set 1" pipe with 4" MGNR cap. Blazed and scribed the following bearing trees:
5" Sugar N10W 39.0' 1/10S BT
10" Sugar S64E 29.0' 1/10S BT
4" Sugar S24E 30.4' 1/10S BT
9" Sugar S59W 19.0' 1/10S BT
Set a 3" squared sugar post adjacent. Center of a woods road C. N55W-S55E is 8' South. Bearings are magnetic. | (1) Set 1" pipe with 4" MGNR cap. Blazed and scribed the following bearing trees:
8" Spruce N15E 7.2' 1/10S BT
5" Spruce S71E 20.4' 1/10S BT
4" Spruce S05W 20.2' 1/10S BT
8" Spruce S00W 14.5' 1/10S BT
Set a 4" squared spruce post adjacent. Bearings are magnetic. |
|--|---|---|



Signed by Stephan J. Szyszkoski Date 7-14-94
Surveyor's Michigan License No. 33986

