

LAND CORNER RECORDATION CERTIFICATE
Filing Requirement of Act 74, Mich. P.A. 1970

For corners in
Dickinson

(County)

Located In:

Corner Code ≠#

1. Public Land Survey	T <u>43N</u> R <u>29W</u>	<u>68</u>
	T _____ R _____	_____
	T _____ R _____	_____
	T _____ R _____	_____
2. Property Controlling in Section	S <u>18</u> T <u>43N</u> R <u>29W</u>	<u>1</u>
	S <u>15</u> T <u>43N</u> R <u>29W</u>	<u>2</u>
3. Miscellaneous Property in Sec.	S _____ T _____ R _____	_____
	S _____ T _____ R _____	_____

Register of Deeds Stamp & File Number

4. Lot No. _____, Recorded Plat _____
 5. Private Claims _____

68 April 28, 1994
2 May 04, 1994

I, Stephan J. Szyszkoski, in a field survey on June 08, 1994, 19_____, do hereby certify that under requirements of P.A. 74, Michigan P.A. of 1970, the corner points mentioned in lines 1 and 2 above were in conformance with regulations and rules therefore as required in the current manual of survey instructions of the United States Department of the Interior, Bureau of Land Management or by a decree of a Court of Law and/or that the corner points mentioned in lines 3, 4 and 5 above were in conformance with the rules of the Michigan Board of Land Surveyors or by a Decree of a Court of Law, established, re-established, monumented, re-monumented, recovered, found as expressed below.

NOTE: Not more than 4 corners, all in the same town and range, may be recorded on this certificate.

A. Description of original monument and accessories and/or subsequent restoration:

(68) Quarter corner common to Sections 21-22. Original corner established in 1848 by Harvey Mellan as follows: Cedar 5 for 1/4 Section corner. Cedar 12 N15W 18. Found no subsequent record.
 (1-Sec.16) West 1/16 corner between Sections 9-16. Corner not established in the original survey. Found no subsequent record.
 (2-Sec.15) East 1/16 corner between Sections 10-15. Corner not established in the original survey. Found no subsequent record.

B. Description of corner evidence found and/or method applied in restoring or reestablishing corner:

(68) Original corner tree and BT not recovered. Corner falls in a cedar swamp. Several downed cedars in the area but none to match the record. Living cedars show evidence of quite rapid growth here. Found no acceptable evidence of the position of the original corner on the ground. Reestablished the corner on a straight line between Sections corners 2847.15' North and South, being the proportionate position. At the position for the corner, I placed a 1"i.d.x32" iron pipe capped with a 4" dia. cast aluminum MNHR tablet, appropriately stamped.

(1-Sec.16) Found no evidence of prior monumentation at the corner position. Established the corner on a straight line between Section corner 1317.25' West and Quarter corner 1317.25' East. At the position for the corner, I placed a 1"i.d.x32" iron pipe capped with a 4" dia. cast aluminum MNHR tablet, appropriately stamped. The corner falls in a cedar swamp about 168' NW of centerline of Turner road.

(2-Sec.15) Found no evidence of prior monumentation at the corner position. Established the corner on a straight line between Quarter corner 1326.50' west and Section corner 1326.50' East. At the position for the corner, I placed a 1"i.d.x32" iron pipe capped with a 4" dia. cast aluminum MNHR tablet, appropriately stamped. The corner lies on a steep North facing slope of rock. I built a rock mound 3.5' in diameter and 2' high around the monument. The top of the monument projects about 10' above the mound of rock.

C. Description of monument for corner and accessories established to perpetuate locating the position of the corner:

(68) Set 1" pipe with 4" MNHR cap. Blazed and scribed the following new bearing trees:

12" Cedar S07E 12.0' 1/4S NBT"
 5" Cedar S40W 4.0' 1/4S NBT"
 4" Cedar N22W 13.5' 1/4S NBT"
 9" Cedar N18E 8.0' 1/4S NBT"

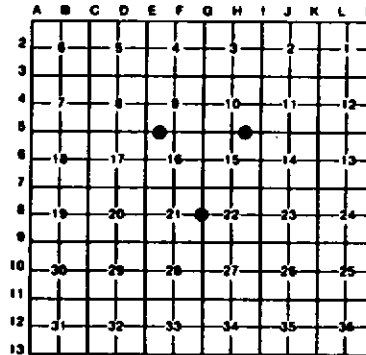
Set a 4" squared cedar post adjacent. Bearings are magnetic. N-S cut trav. line is 17' West.

(1) Set 1" pipe with 4" MNHR cap. Blazed and scribed the following bearing trees:

6" Cedar S50W 6.8' 1/16S BT"
 6" Cedar N72W 14.2' 1/16S BT"
 5" Cedar N32E 20.4' 1/16S BT"
 8" Cedar S79E 17.7' 1/16S BT"
 Placed a 6" squared cedar post adjacent. Bearings are magnetic.

(2) Set 1" pipe with 4" MNHR cap. Blazed and scribed the following bearing trees:

4" Maple S43E 4.4' 1/16S BT"
 4" Balsam Fir S30W 6.4' 1/16S BT"
 6" Maple N69W 36.5' (on slope) 1/16S BT"
 5" Maple N39E 16.9' (on slope) 1/16S BT"
 Squared a 4" W. Birch N23E 4.3'
 Bearings are magnetic.



Signed by Stephan J. Szyszkoski Date 7-14-94
 Surveyor's Michigan License No. 33986

FORM APPROVED BY MICHIGAN STATE BOARD OF LAND SURVEYORS

