

**LAND CORNER RECORDATION CERTIFICATE**  
**Filing Requirement of Act 74, Mich. P.A. 1970**

For corners in  
Dickinson

(County)

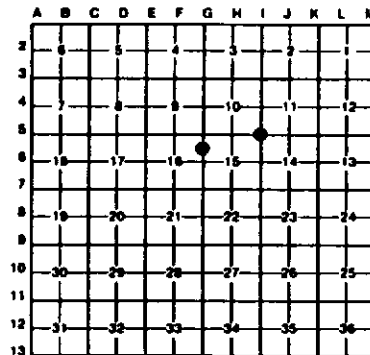
Located In:

Corner Code #

1. Public Land Survey	T	<u>43N</u>	R	<u>29W</u>	<u>15</u>		
	T	_____	R	_____	_____		
	T	_____	R	_____	_____		
	T	_____	R	_____	_____		
2. Property Controlling in Section	S	<u>15</u>	T	<u>43N</u>	R	<u>29W</u>	<u>3</u>
	S	_____	T	_____	R	_____	_____
3. Miscellaneous Property in Sec.	S	_____	T	_____	R	_____	_____
	S	_____	T	_____	R	_____	_____

Register of Deeds Stamp & File Number

4. Lot No. \_\_\_\_\_, Recorded Plat \_\_\_\_\_  
 5. Private Claims \_\_\_\_\_



I, Stephan J. Szyzkoski, in a field survey on May 03, 1994, 19\_\_\_\_\_, do hereby certify that under requirements of P.A. 74, Michigan P.A. of 1970, the corner points mentioned in lines 1 and 2 above were in conformance with regulations and rules therefore as required in the current manual of survey instructions of the United States Department of the Interior, Bureau of Land Management or by a decree of a Court of Law and/or that the corner points mentioned in lines 3, 4 and 5 above were in conformance with the rules of the Michigan Board of Land Surveyors or by a Decree of a Court of Law; established, re-established, monumented, re-monumented, recovered, found as expressed below:

NOTE: Not more than 4 corners, all in the same town and range, may be recorded on this certificate.

A. Description of original monument and accessories and/or subsequent restoration:

(15) Section corner common to Sections 10-11-14-15. Original corner established in 1848 by Harvey Mallen as follows: Set cedar post. Nonloch 12 S30W 28, Sogor 12 N54E 18. Found no subsequent record.  
 (3-Sec.15) North 1/16 corner between Sections 15-16. Corner not established in the original survey. Found no subsequent record.

B. Description of corner evidence found and/or method applied in restoring or reestablishing corner:

(15) Original post and accessories not recovered. Area has been burned, cut over, and worked with equipment, leaving little remains to be found. Found no acceptable evidence of the original corner on the ground. Reestablished the corner by double proportionate measurement to the original record between government corners 10575.00' west, 10562.84' north, 2055.63' east, and 5301.30' south. The corner position thus determined conforms well with the original line calls N-S-E-W. At the position for the corner, I placed a 1" I.D. x 32" iron pipe capped with a 4" dia. cast aluminum MONR tablet, appropriately stamped. From the corner monumented, I found a 1.5" I.D. iron pipe, placed by unknown persons, S83W 72.03'. This pipe clearly does not conform to the original record with respect to the line calls in all four directions, nor the distances to the adjacent government corners, and was not accepted as marking the Section corner.

(3-Sec.15) Found no evidence of prior monumentation at the corner position. Established the corner on a straight line between Section corner 1319.41' North and 1319.41' South. At the position for the corner, I placed a 1" I.D. x 32" iron pipe capped with a 4" dia. cast aluminum MONR tablet, appropriately stamped. The corner falls on a steep side slope facing Southwest. Set the monument cap flush with the ground.

C. Description of monument for corner and accessories established to perpetuate locating the position of the corner:

(15) Set 1" pipe with 4" MONR cap. Blazed and scribed the following new bearing trees:  
 5" N. Pine S32W 32.0' "S15 NBT"  
 6" Spruce N23W 31.4' "S10 NBT"  
 7" N. Pine N59E 44.9' "S11 NBT"  
 7" N. Pine S35E 45.0' "S14 NBT"  
 Set a 4" squared and scribed N. Pine post adjacent. Bearings are magnetic.

(3) Set 1" pipe with 4" MONR cap. Blazed and scribed the following bearing trees:  
 4" Spruce N39W 19.3' "1/108 BT"  
 14" W. Pine stump N40E 20.3' "1/108 BT"  
 6" Aspen N45E 16.7' "1/108 BT"  
 3" Spruce S23E 9.0' "1/108 BT"  
 Set a squared 3" spruce post adjacent. Bearings are magnetic, distances measured along the slope of the hill.



Signed by Stephan J. Szyzkoski Date 7-14-94

Surveyor's Michigan License No. 33986