

MICHIGAN
DEPARTMENT OF CONSERVATION
FORESTRY DIVISION

LAND CORNER RECORD

T. 43-44 N.R. 27W

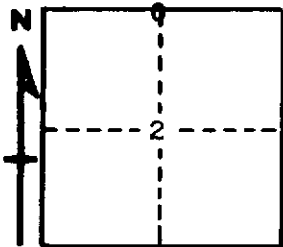
Dickinson COUNTY

DESCRIPTION OF CORNER 1/4 Corner between Secs. 2-35

CORNER MONUMENT 1" Pipe with 4" Aluminum Cap

DATE MONUMENT PLACED AND WITNESSED 1/31/64 with R. Smith, Marquette

WITNESSES TO CORNER..... 11" Red Pine (1/2 S NBT) N17°E 183 1/2 Lks.



CIRCLE CORNER REGISTERED

AND

DESCRIPTION IN DETAIL AS TO HOW CORNER WAS LOCATED AND IDENTIFIED OR RESTORED.

This Corner was replaced at old Wood Stake with remains of Y. Pine Stump bearing N25°E 158 Links. Position checks with Corners 1/2 mile East and West.

SURVEYOR'S SEAL

SIGNED

Billy D. Buckler
BILLY D. BUCKLER
REGISTERED LAND SURVEYOR

DATE

3/4/1964