

**LAND CORNER RECORDATION CERTIFICATE**  
**Filing Requirement of Act 74, Mich. P.A. 1970**

For corners in

Dickinson	Located In:	Corner Code #
(County)		
<b>1. Public Land Survey</b>	T <u>44N</u> R <u>28W</u>	<u>I1</u>
	T <u>44N</u> R <u>28W</u>	<u>E5</u>
	T _____ R _____	_____
	T _____ R _____	_____
<b>2. Property Controlling in Section</b>	S _____ T _____ R _____	_____
	S _____ T _____ R _____	_____
<b>3. Miscellaneous Property in Sec.</b>	S _____ T _____ R _____	_____
	S _____ T _____ R _____	_____

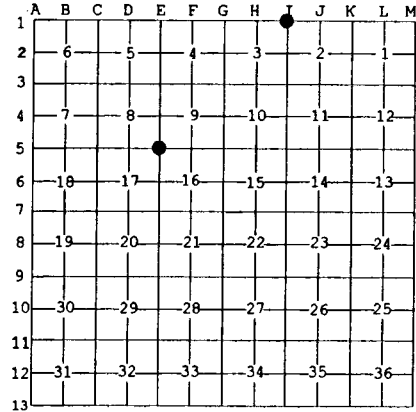
Register of Deeds Stamp & File Number

4. Lot No. \_\_\_\_\_, Recorded Plat \_\_\_\_\_  
 5. Private Claims \_\_\_\_\_

Oct 01 1998

I, Stephan J. Szyszkoski, in a field survey on \_\_\_\_\_, 19\_\_\_\_ do hereby state that under requirements of P.A. 74, Michigan P.A. of 1970, the corner points mentioned in lines 1 and 2 above were in conformance with regulations and rules therefore as required in the current manual of survey instructions of the United States Department of the Interior, Bureau of Land Management or by a decree of a Court of Law and /or that the corner points mentioned in lines 3, 4 and 5 above were in conformance with the rules of the Michigan Board of Land Surveyors or by a Decree of a Court of Law; established, re-established, monumented, recovered, found as expressed below.

**NOTE:** Not more than 2 corners, all in the same town and range, may be recorded on this certificate.



**A. Description of original monument and accessories and/or subsequent restoration:**

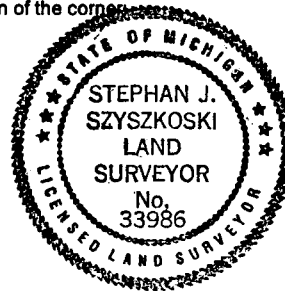
- (I1) Corner common to Sections 2-3 T44N-R28W and 34-35 T45N-R28W. Remonumented in 1957 by Billy D. Buckler, RLS, in the original position according to an original bearing tree stump. 1" pipe with 4" brass cap. 18" Red Oak S12W 74.5 links, 17" Red Pine N81E 129.5 links.
- (E5) Corner common to Sections 8-9-16-17. Remonumented in 1965 by Frank J. Bray, RLS. 1" iron pipe with 4" aluminum cap. 6" Apsen S42W 10.5 links, 7" Aspen N54W 12 links, 4" Aspen S77E 46.25 links.

**B. Description of corner evidence found and/or method applied in restoring or reestablishing corner:**

- (I1) Recovered the 1957 monument, a 1" ID iron pipe capped with a 4" dia. brass Michigan Dept. of Conservation tablet, at record bearing and distance from the 1957 witnesses. The R.Oak is in good condition. The R.Pine is alive but in poor condition. Left the monument in place and made new witnesses as described below.
- (E5) Recovered the 1965 monument, as described, in good condition, and at record bearing and distance from the remains of the 1965 Aspen SW, now dead and down. The other two Aspen NBT's are gone. The centerline of a dirt road (Schwartz creek loop) is 14' ESE. Left the monument in place and made new witnesses.

**C. Description of monument for corner and accessories established to perpetuate locating the position of the corner:**

- |  |  |
|--|--|
| (I1) 1" pipe with 4" brass cap.  | (E5) 1" pipe with 4" aluminum cap.   |
| Blazed and scribed the following:  | Blazed and scribed the following:  |
| 4" Ironwood N59E 14.3' "S35 NBT"   | 8" W. Spruce N74E 59.5' "S9 NBT"   |
| 12" Sugar S64E 26.0' "S2 NBT"  | 14" R.Pine S21E 47.9' "S16 NBT"  |
| 10" Sugar S68W 3.6' "S3 NBT"   | 3" W.Pine S64W 1.0' "S17 NBT"  |
| Squared cedar post adjacent. Bearings are magnetic. Distances are to notch in lower blaze. | 4" W.Pine N49W 5.6' "S8 NBT"   |
|  | Squared cedar post adjacent. Bearings are magnetic. Distances are to notch in lower blaze. |



Signed by Stephan J. Szyszkoski Date 3/7/00  
 Surveyor's Michigan License No. 33986

For the Michigan Department of Natural Resources - Forest Management Division