

LAND CORNER RECORDATION CERTIFICATE
Filing Requirement of Act 74, Mich. P.A. 1970

For corners in

Dickinson
 (County)

Located In:

Corner Code #

1. Public Land Survey	T 44N R 28W	69
	T 44N R 28W	F9
	T R	
	T R	
2. Property Controlling in Section	S T R	
	S T R	
3. Miscellaneous Property in Sec.	S T R	
	S T R	

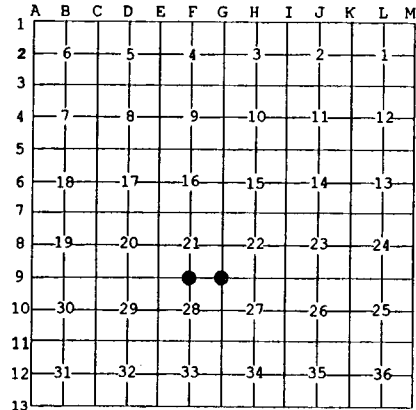
Register of Deeds Stamp & File Number

4. Lot No. _____, Recorded Plat _____
 5. Private Claims _____

May 25 1999

I, Stephan J. Szyszkoski, in a field survey on _____, 19____ do hereby state that under requirements of P.A. 74, Michigan P.A. of 1970, the corner points mentioned in lines 1 and 2 above were in conformance with regulations and rules therefore as required in the current manual of survey instructions of the United States Department of the Interior, Bureau of Land Management or by a decree of a Court of Law and /or that the corner points mentioned in lines 3, 4 and 5 above were in conformance with the rules of the Michigan Board of Land Surveyors or by a Decree of a Court of Law; established, re-established, monumented, recovered, found as expressed below:

NOTE: Not more than 2 corners, all in the same town and range, may be recorded on this certificate.



A. Description of original monument and accessories and/or subsequent restoration:
 (G9) Corner common to Sections 21-22-27-28. Remonumented in 1952 by Dean C. DeLaMater, RLS, in the original position according to two original B.T.'s. 1" pipe with 4" brass cap. 8" Spruce S40W 25 links, 5" Spruce N26E 21 links.
 (F9) Quarter corner common to Sections 21-28. Corner remonumented in 1956 by Billy D. Buckler, RLS. 1" pipe with 4" brass cap. 12" Cedar S25E 20 links, 14" Hard Maple N10W 28 links.

B. Description of corner evidence found and/or method applied in restoring or reestablishing corner:
 (G9) Recovered the 1952 monument, a 1" ID iron pipe capped with a 4" dia. brass Michigan Dept. of Conservation tablet, in good condition, and at record bearing and distance from the 1952 accessories. The Spruce SW is dead and standing with scribing visible. The Spruce NE (1999 mag. bearing is N36E) is in good condition with scribing visible. Left the monument in place and marked three new accessories as described below.
 (F9) Recovered the 1956 monument, a 1" ID iron pipe capped with a 4" dia. brass Michigan Dept. of Conservation tablet, in good condition, and at record bearing and distance from the remains of the 1956 witnesses. The Cedar is dead and down. The Sugar is now a black stump. Left the monument in place and marked 4 new accessories as described below.

C. Description of monument for corner and accessories established to perpetuate locating the position of the corner:
 (G9) 1" pipe with 4" brass cap. Blazed and scribed the following:
 8" B.Spruce S49E 2.0' "S27 NBT"
 8" B.Spruce S36W 8.4' "S28 NBT"
 8" B.Spruce N69W 12.1' "S21 NBT"
 Squared cedar post adjacent. Bearings are magnetic. Distances are to notch in lower blaze.
 (F9) 1" pipe with 4" brass cap. Blazed and scribed the following:
 4" W.Spruce N53E 50.9' "1/4S NBT"
 14" W.Spruce S73E 85.0' do
 7" W.Spruce (E'ly of 2) S45W 49.0' do
 20" Y.Birch N8W 71.6' do
 Squared cedar post adjacent. Bearings are magnetic. Distances are to notch in lower blaze.



Signed by Stephan J. Szyszkoski Date 3/7/00
 Surveyor's Michigan License No. 33986