

LAND CORNER RECORDATION CERTIFICATE
Filing Requirement of Act 74, Mich. P.A. 1970

For corners in

<u>Dickinson</u> (County)	Located In:	Corner Code #
1. Public Land Survey	T <u>44N</u> R <u>28W</u>	<u>I10</u>
	T <u> </u> R <u> </u>	<u> </u>
	T <u> </u> R <u> </u>	<u> </u>
	T <u> </u> R <u> </u>	<u> </u>
2. Property Controlling in Section	S <u>26</u> T <u>44N</u> R <u>28W</u>	<u>5</u>
	S <u> </u> T <u> </u> R <u> </u>	<u> </u>
3. Miscellaneous Property in Sec.	S <u> </u> T <u> </u> R <u> </u>	<u> </u>
	S <u> </u> T <u> </u> R <u> </u>	<u> </u>

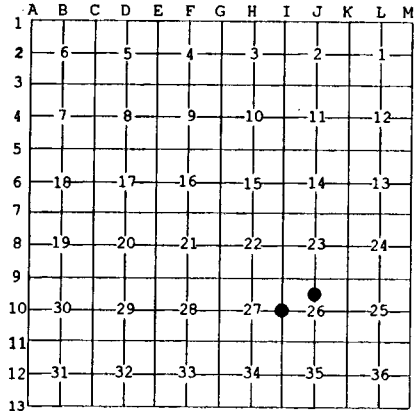
Register of Deeds Stamp & File Number

4. Lot No. _____, Recorded Plat _____
 5. Private Claims _____

Nov 04 1999

I, Stephan J. Szyszkoski, in a field survey on _____, 19____ do hereby state that under requirements of P.A. 74, Michigan P.A. of 1970, the corner points mentioned in lines 1 and 2 above were in conformance with regulations and rules therefore as required in the current manual of survey instructions of the United States Department of the Interior, Bureau of Land Management or by a decree of a Court of Law and /or that the corner points mentioned in lines 3, 4 and 5 above were in conformance with the rules of the Michigan Board of Land Surveyors or by a Decree of a Court of Law; established, re-established, monumented, recovered, found as expressed below:

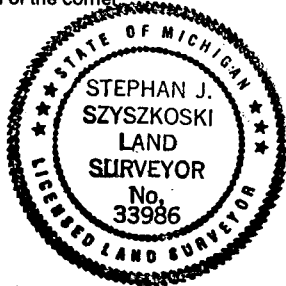
NOTE: Not more than 2 corners, all in the same town and range, may be recorded on this certificate.



A. Description of original monument and accessories and/or subsequent restoration:
 (I10) Quarter corner common to Sections 26-27. Established in 1850 by John Burt: "39.98 Set Cedar Quarter Section post. Y. Birch 12 S62E 33, Sugar 12 N56W 22."
 (5-Sec. 26) North 1/16 corner, Section 26. Corner not established in the original survey. Found no subsequent record.

B. Description of corner evidence found and/or method applied in restoring or reestablishing corner:
 (I10) Original post and accessories were not recovered. Found no acceptable evidence of the position of the original corner on the ground. Reestablished the corner midway and on a line of mean true bearing between Section corners 2631.34' north and south. At the position for the corner I placed a 1" I.D. x 32" iron pipe capped with a 4" dia. cast aluminum MDNR tablet, appropriately stamped.
 (5-Sec. 26) Established the corner midway and on a straight line between Quarter corner 1319.95' north and Center of Section 1319.95' south. At the position for the corner I placed a 1" I.D. x 32" iron pipe capped with a 4" dia. cast aluminum MDNR tablet, appropriately stamped.

C. Description of monument for corner and accessories established to perpetuate locating the position of the corner:
 (I10) Set 1" pipe with 4" MDNR cap. (5) Set 1" pipe with 4" MDNR cap.
 Blazed and scribed the following: Blazed and scribed the following:
 7" Sugar S27E 63.1' 1/4S N8T" 9" Sugar N13E 13.2' 1/16S BT"
 7" W. Birch in clump N59E 12.65' do 5" Sugar N86E 37.0' do
 10" Sugar S80W 16.0' do 4" Sugar S05W 15.5' do
 10" Sugar N32W 18.8' do 6" Sugar N80W 14.6' do
 Squared cedar post adjacent. Bearings are magnetic. Distances to notch in lower blaze. Squared cedar post adjacent. Bearings are magnetic. Distances to notch in lower blaze.



Signed by Stephan J. Szyszkoski Date 3/7/00
 Surveyor's Michigan License No. 33986