

LAND CORNER RECORDATION CERTIFICATE
Filing Requirement of Act 74, Mich. P.A. 1970

For corners in

<u>Dickinson</u>	Located In:	Corner Code #
(County)		
1. Public Land Survey	T <u>44N</u> R <u>28W</u>	<u>H11</u>
	T <u>44N</u> R <u>28W</u>	<u>J10</u>
	T _____ R _____	_____
	T _____ R _____	_____
2. Property Controlling in Section	S _____ T _____ R _____	_____
	S _____ T _____ R _____	_____
3. Miscellaneous Property in Sec.	S _____ T _____ R _____	_____
	S _____ T _____ R _____	_____

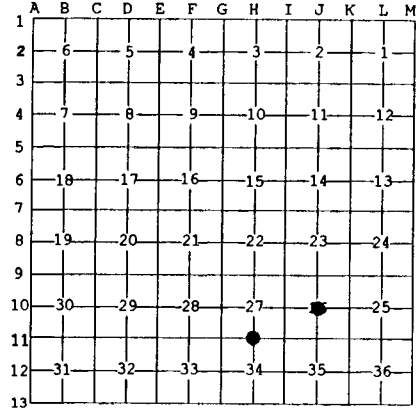
Register of Deeds Stamp & File Number

4. Lot No. _____, Recorded Plat _____
 5. Private Claims _____

J10 Nov 02 1999
 H11 Nov 01 1999

I, Stephan J. Szyszkoski, in a field survey on _____, 19____ do hereby state that under requirements of P.A. 74, Michigan P.A. of 1970, the corner points mentioned in lines 1 and 2 above were in conformance with regulations and rules therefore as required in the current manual of survey instructions of the United States Department of the Interior, Bureau of Land Management or by a decree of a Court of Law and /or that the corner points mentioned in lines 3, 4 and 5 above were in conformance with the rules of the Michigan Board of Land Surveyors or by a Decree of a Court of Law; established, re-established, monumented, recovered, found as expressed below:

NOTE: Not more than 2 corners, all in the same town and range, may be recorded on this certificate.



A. Description of original monument and accessories and/or subsequent restoration:
 (H11) Quarter corner common to Sections 27-34. Established in 1850 by John Burt: "40.05 Set Cedar Quarter Section Post. Sugar 14 S21E 25, Sugar 18 N55W 21."
 (J10) Center of Section 26. Corner not established in the original survey.

B. Description of corner evidence found and/or method applied in restoring or reestablishing corner:
 (H11) The original post and accessories were not recovered. Found a 1" ID iron pipe, projecting about 12" above ground marked with a nearby angle iron post projecting to a height of about 7' above ground. The pipe was placed by persons unknown. The location is in reasonable accord with the original measurements to the section corners east and west. I accept the pipe as the best available evidence of the position of the original corner and place on it a yellow plastic cap stamped "MICH DNR PS33986".
 (J10) Found no evidence of prior monumentation at the corner position. Established the corner at the intersection of straight lines connecting opposite quarter corners. At the position for the corner I placed a 1" I.D. x 32" iron pipe capped with a 4" dia. cast aluminum MDNR tablet, appropriately stamped.

C. Description of monument for corner and accessories established to perpetuate locating the position of the corner:
 (H11) 1" iron pipe with yellow plastic cap "PS33986". Blazed and scribed the following:
 7" Balsam S29E 44.6' "1/4S NBT"
 4" Spruce S14W 46.6' do
 5" Spruce S39W 103.6' do
 7" Aspen N06E 117.3' do
 Bearings are magnetic. Distances to notch in lower blaze.
 (J10) Set 1" pipe with 4" MDNR cap. Blazed and scribed the following:
 6" Sugar East 65.2' "C1/4 BT"
 6" Sugar S44E 51.0' do
 9" Sugar N86W 64.3' do
 5" Balsam N45W 47.0' do
 Squared cedar post adjacent. Bearings are magnetic. Distances to notch in lower blaze.



Signed by Stephan J. Szyszkoski Date 3/7/00
 Surveyor's Michigan License No. 33986

For the Michigan Department of Natural Resources - Forest Management Division