

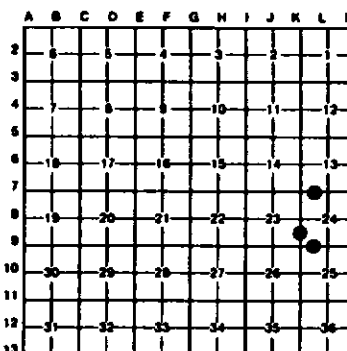
LAND CORNER RECORDATION CERTIFICATE  
Filing Requirement of Act 74, Mich. P.A. 1970

For corners in  
Dickinson

Country	Located in:	Corner Code #
1. Public Land Survey	T _____ R _____	_____
	T _____ R _____	_____
	T _____ R _____	_____
	T _____ R _____	_____
2. Property Controlling in Section	S <u>24</u> T <u>44N</u> R <u>28W</u>	<u>1</u>
	S <u>24</u> T <u>44N</u> R <u>28W</u>	<u>10</u>
3. Miscellaneous Property in Sec.	S <u>24</u> T <u>44N</u> R <u>28W</u>	<u>15</u>
	S _____ T _____ R _____	_____

Register of Deeds Stamp & File Number

4. Lot No. \_\_\_\_\_, Recorded Plat \_\_\_\_\_  
5. Private Claims \_\_\_\_\_



I, Stephan J. Szyszkoski, in a field survey on January 21, 1993, 19\_\_\_\_\_, do hereby certify that under requirements of P.A. 74, Michigan P.A. of 1970, the corner points mentioned in lines 1 and 2 above were in conformance with regulations and rules therefore as required in the current manual of survey instructions of the United States Department of the Interior, Bureau of Land Management or by a decree of a Court of Law and/or that the corner points mentioned in lines 3, 4 and 5 above were in conformance with the rules of the Michigan Board of Land Surveyors or by a Decree of a Court of Law; established, re-established, monumented, re-monumented, recovered, found as expressed below:

NOTE: Not more than 4 corners, all in the same town and range, may be recorded on this certificate.

A. Description of original monument and accessories and/or subsequent restoration:

- (1) West 1/16 corner between Sections 13 and 24. Corner not established in the original survey. Found no subsequent record.
- (10) South 1/16 corner between Sections 23 and 24. Corner not established in the original survey. Found no subsequent record.
- (15) West 1/16 corner between Sections 24 and 25. Corner not established in the original survey. Found no subsequent record.

B. Description of corner evidence found and/or method applied in restoring or reestablishing corner:

- (1) Found no evidence of prior monumentation or evidence of use at corner location. Established corner midway and on a straight line between recorded Section corner 1321.87' west and recorded Quarter corner 1321.87' east. Corner falls in a stand of young popple.
- (10) Established the corner midway and on a straight line between Quarter and Section corners 1320.02' North and South. From the position thus determined, I found a 1.25" I.D. iron pipe, not of record, 1.0' South and 18.1' East. similar pipes were found marking the approximate corners of the NW1/4 of the SW1/4 of Section 24.
- (15) Found no evidence of prior monumentation or evidence of use at corner location. Established the corner midway and on a straight line between Section corner and Quarter corner 1324.57' west and east.

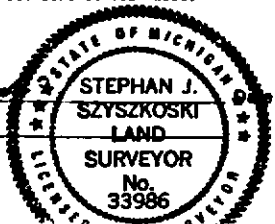
C. Description of monument for corner and accessories established to perpetuate locating the position of the corner:

(1) Set 1"x32" iron pipe capped with a 4" dia. cast aluminum MDNR tablet. Blazed and scribed the following:  
 2" Aspen N16W 6.5' (1/16S BT)  
 2" Aspen N50E 9.1' (1/16S BT)  
 2" Aspen S79E 3.9' (1/16S BT)  
 2" Aspen S37W 11.8' (1/16S BT)  
 E-W cut line is 23' South.

(10) Set a 1"x32" iron pipe capped with a 4" dia. cast aluminum MDNR tablet. Blazed and scribed the following:  
 3" Balsam S41E 32.1' (1/16S BT)  
 4" Spruce N78E 28.6' (1/16S BT)  
 6" Spruce N43W 43.4' (1/16S BT)  
 5" Aspen S42W 19.5' (1/16S BT)  
 N-S cut line is 7.5' West.

(15) Set 1"x32" iron pipe capped with a 4" dia. cast aluminum MDNR tablet. Blazed and scribed the following:  
 4" Balsam N45W 5.2' (1/16S BT)  
 4" Balsam N72E 9.6' (1/16S BT)  
 4" Balsam S16E 4.8' (1/16S BT)  
 4" Balsam S64W 18.9' (1/16S BT)  
 E-W cut line is 8.5' North.

Signed by Stephan J. Szyszkoski  
Surveyor's Michigan License No. 33286



2-18-93