

LAND CORNER RECORDATION CERTIFICATE
Filing Requirement of Act 74, Mich. P.A. 1970

For corners in
Dickinson

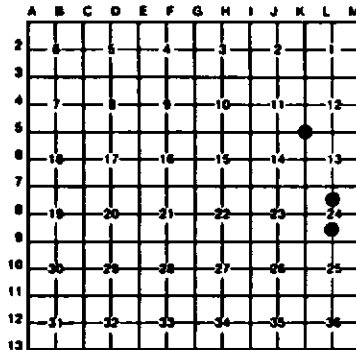
County	Located in:	Corner Code #
1. Public Land Survey	T 44N R 20W	K5
	T R	
	T R	
	T R	
2. Property Controlling in Section	S 24 T 44N R 20W	5
	S 24 T 44N R 20W	12
3. Miscellaneous Property in Sec.	S T R	
	S T R	

Register of Deeds Stamp & File Number

4. Lot No. _____, Recorded Plat _____
 5. Private Claims _____

I, Stephan J. Szyszkoski, in a field survey on February 09, 1993, 19_____, do hereby certify that under requirements of P.A. 74, Michigan P.A. of 1970, the corner points mentioned in lines 1 and 2 above were in conformance with regulations and rules therefore as required in the current manual of survey instructions of the United States Department of the Interior, Bureau of Land Management or by a decree of a Court of Law and/or that the corner points mentioned in lines 3, 4 and 5 above were in conformance with the rules of the Michigan Board of Land Surveyors or by a Decree of a Court of Law, established, re-established, monumented, re-monumented, recovered, found as expressed below.

NOTE: Not more than 4 corners, all in the same town and range, may be recorded on this certificate.



A. Description of original monument and accessories and/or subsequent restoration:

- (K5) Corner common to Sections 11-12-13-14. Corner established in original survey in 1850 and perpetuated by Michigan Dept. of Conservation surveyor Dean C. DeLaMater in 1952, who found one original BT still in place, in poor condition. Corner was re-monumented with a 1" pipe with a 4" brass cap and the following NBTs were taken: 8" Cedar S72E 17' links, 10" Cedar S14W 46 links. Found no subsequent record.
- (5) North 1/16 corner Section 24. Corner not established in the original survey. Found no subsequent record.
- (12) South 1/16 corner, Section 24. Corner not established in original survey. Found no subsequent record.

B. Description of corner evidence found and/or method applied in restoring or reestablishing corner:

- (K5) Recovered a 1" pipe with a 4" brass Mich. Dept. of Conservation cap at record bearing and distance from the two 1952 cedar NBT's. Both NBT's are standing and alive, in good condition. Blazes are overgrown with scribing visible on the Cedar SW. Took two new bearing trees as described below.
- (5) Found no evidence of prior monumentation or evidence of use at corner location. Established corner midway and on a straight line between the Center of Section 24 and the 1/4 Corner between Sections 24 and 13, both as recorded this date. Cut line runs north and south from this corner.
- (12) Found no evidence of prior monumentation or evidence of use at corner location. Established corner midway and on a straight line between the Center of Section 24, and the 1/4 corner between Sections 24-25, both as recorded this date.

C. Description of monument for corner and accessories established to perpetuate locating the position of the corner:

- (K5) Found 1" pipe with 4" brass cap. Blazed and scribed the following:
6" Cedar N22W 8.5' (S11 NBT)
9" Cedar N50E 17.6' (S12 NBT)
Placed 4" squared cedar post SW 1'.
- (5) Set a 1"x32" pipe capped with a 4" dia. cast aluminum MDNR tablet projecting about 12". Blazed and scribed the following:
5" Spruce N14W 5.0' (1/16S BT)
5" Spruce N22E 6.3' (1/16S BT)
4" Spruce S46E 15.1' (1/16S BT)
10" Maple S10W 13.4' (1/16S BT)
Corner falls on a N. facing slope about 320' north of hill crest. All distances are horizontal.
- (12) Set a 1"x32" iron pipe capped with a 4" dia. cast aluminum MDNR tablet. Blazed and scribed the following:
3" Spruce S40E 6.6' (1/16S BT)
14" Spruce N62E 52.4' (1/16S BT)
8" W. Birch N05W 27.3' (1/16S BT)
8" W. Birch S07W 26.6' (1/16S BT)
Cut line runs N-S from corner.



Date 2-18-93