

LAND CORNER RECORDATION CERTIFICATE
Filing Requirement of Act 74, Mich. P.A. 1970

For corners in
Dickinson

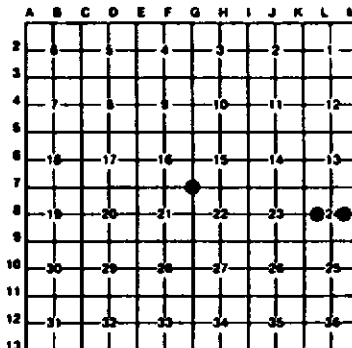
County	Located In:	Corner Code #
1. Public Land Survey	T 44N R 28W	67
	T R	
	T R	
	T R	
2. Property Controlling In Section	S 24 T 44N R 28W	8
	S 24 T 44N R 28W	9
3. Miscellaneous Property in Sec.	S T R	
	S T R	

Register of Deeds Stamp & File Number

4. Lot No. _____, Recorded Plat _____
5. Private Claims _____

I, Stephan J. Szyszkoski, in a field survey on February 09, 1993, 19____, do hereby certify that under requirements of P.A. 74, Michigan P.A. of 1970, the corner points mentioned in lines 1 and 2 above were in conformance with regulations and rules therefore as required in the current manual of survey instructions of the United States Department of the Interior, Bureau of Land Management or by a decree of a Court of Law and/or that the corner points mentioned in lines 3, 4 and 5 above were in conformance with the rules of the Michigan Board of Land Surveyors or by a Decree of a Court of Law, established, re-established, monumented, re-monumented, recovered, found as expressed below:

NOTE: Not more than 4 corners, all in the same town and range, may be recorded on this certificate.



A. Description of original monument and accessories and/or subsequent restoration:

- (67) Corner common to Sections 15-16-21-22. Corner established in original survey in 1850. Original corner perpetuated by Mich. Dept. of Conservation surveyor Dean C. DeLaMater in 1952, who found one original BT still in place, in poor condition. Corner was re-monumented with a 1" pipe with a 4" brass cap and the following NBTs were established: 9" Cedar N35E 15 links, 9" Cedar S74W 39 links.
(8) West 1/16 corner Section 24. Corner not established in original survey. Found no subsequent record.
(9) East 1/16 corner Section 24. Corner not established in the original survey. Found no subsequent record.

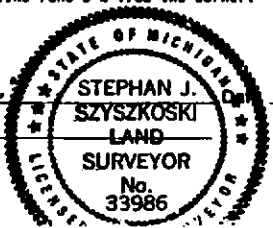
B. Description of corner evidence found and/or method applied in restoring or reestablishing corner:

- (67) Found a 1" pipe with a 4" brass Mich. Dept. of Conservation cap at record bearing and distance from the two 1952 NBTs. The Cedar NE is green and scribing is visible. The cedar SW is dead with "S 0 NBT" visible. Accepted corner as monumented and took two new NBTs as described below.
(8) Established the corner midway and on a straight line between the Center of Section 24 and the 1/4 Corner between Sections 23 and 24, both as recorded this date. From the corner position thus established, I found a 1.25" I.D. iron pipe, not of record, approximately 3' south and 29.5' east.
(9) Found no evidence of prior monumentation or evidence of use at corner location. Established the corner midway and on a straight line between the Center of Section 24, and the 1/4 corner common to Sections 24, T44N-R28W and 19, T44N-R27W. Cut line runs east and west from this corner.

C. Description of monument for corner and accessories established to perpetuate locating the position of the corner:

- | | | |
|--|---|---|
| (67) Found 1" pipe with 4" brass cap. Blazed and scribed the following:
8" Cedar N49W 10.2' (S16 NBT)
9" Cedar S58E 12.2' (S22 NBT)
Placed 7" squared cedar post North 1'. Re-measured the green 1952 NBT: 9" cedar N42E 9.0'. Cut line to east is 48' south. | (8) Set a 1"x32" iron pipe capped with a 4" dia. cast aluminum MDNR tablet. Blazed and scribed the following:
8" Spruce S39W 22.1' (1/16S BT)
6" Spruce S67E 30.9' (1/16S BT)
6" Spruce N62W 27.0' (1/16S BT)
6" N. Birch N65E 35.9' (1/16S BT)
Cut line runs E-W from the corner. | (9) Set a 1"x32" iron pipe capped with a 4" dia. cast aluminum MDNR tablet. Blazed and scribed the following:
7" Maple S87E 30.3' (1/16S BT)
10" Maple S81W 44.4' (1/16S BT)
13" Maple N29W 36.9' (1/16S BT)
The high point on the top center of a 3.5"x3"x18" high granite boulder with a 1"x2" fractured notch on the N'ly end, bears N21E, 28.1' |
|--|---|---|

Signed by Stephan J. Szyszkoski
Surveyor's Michigan License No. 33986



2-18-93