

LAND CORNER RECORDATION CERTIFICATE  
Filing Requirement of Act 74, Mich. P.A. 1970

For corners in Dickinson (County)	Located In:	Corner Code #
1. Public Land Survey	T 44R 29W	19
	T 44R 29W	13
2. Property Controlling in Section	T R	
	T R	
	S T R	
3. Miscellaneous Property in Sec.	S T R	
	S T R	

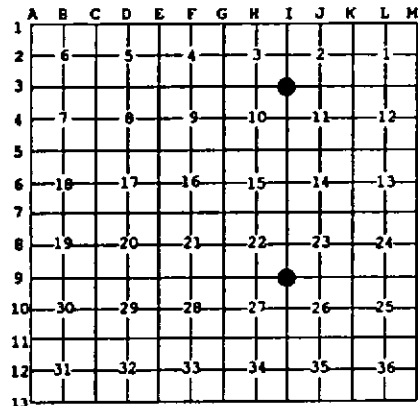
Register of Deeds Stamp & File Number

4. Lot No. \_\_\_\_\_, Recorded Plat \_\_\_\_\_  
5. Private Claims \_\_\_\_\_

13 Jul 17 1996  
19 Jul 31 1996

I, Stephan J. Szyszkoski, in a field survey on \_\_\_\_\_, 19\_\_\_\_ do hereby state that under requirements of P.A. 74, Michigan P.A. of 1970, the corner points mentioned in lines 1 and 2 above were in conformance with regulations and rules therefore as required in the current manual of survey instructions of the United States Department of the Interior, Bureau of Land Management or by a decree of a Court of Law and for that the corner points mentioned in lines 3, 4 and 5 above were in conformance with the rules of the Michigan Board of Land Surveyors or by a Decree of a Court of Law; established, re-established, monumented, recovered, found as expressed below:

NOTE: Not more than 2 corners, all in the same town and range, may be recorded on this certificate.



A. Description of original monument and accessories and/or subsequent restoration:  
 (19) Corner common to Sections 22-23-26-27. Corner re-monumented in 1969 by A.O. Enger, RLS from "probable original cedar BT to the southwest". Enger placed a 1" I.D. x 36" iron pipe with 4" aluminum cap witnessed by W. Spruce 10" S04E 49 links, W. Spruce 6" N50E 28 links, W. Spruce 7" N63W 17.5 links. Found no subsequent record.  
 (13) Corner common to Sections 2-3-10-11. Corner re-monumented in 1959 by Billy D. Buckler, RLS: " Replaced from probable B.T. Remains of W. Pine stp. Found old blazes in vicinity and discoloration in soil at cor. Position to stream south and west good. Cor. lies 1/2 ch. south of road. Cor. placed and wit. 4/21/59... Placed 1" pipe with 4" brass cap 9" J. Pine S10W 81.5 links, 9" J. Pine N76E 33 links, 9" J. Pine N06W 133 links". Found no subsequent record.

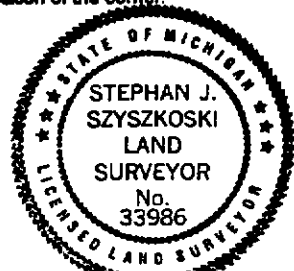
B. Description of corner evidence found and/or method applied in restoring or reestablishing corner:

(19) Found and accepted Enger's monument, as described, in good condition, and at record bearing and distance from his two remaining NBTs: W. Spruce N50E, and W. Spruce N63W. The third witness is dead and down. The undersigned subsequently cut down the Spruce N50E above the BM blaze to facilitate GPS observations. Left the monument in place and marked three new accessories as described below.  
 (13) Found and accepted Buckler's monument, as described, in good condition, and at record bearing and distance from all three 1959 witnesses. The J. Pine NE is a dead stub but the scribing is visible. The other two witnesses are in good condition. Left the monument in place and marked a new witness as described below.

C. Description of monument for corner and accessories established to perpetuate locating the position of the corner:

(19) Found 1" pipe with 4" HDNR cap. The remaining 1970 witness: 9" W. Spruce N61W 11.5' old blazes Blazed and scribed the following new witnesses: 10" Spruce S70E 49.2'      "S26 N8T" 9" Cedar N50E 57.3'      "S23 N8T" 6" Spruce S36W 21.9'      "S27 N8T"	(13) Found 1" pipe with 4" brass cap. The 1959 witnesses as recovered: 15" J. Pine S14W 53.8' blaze overgrown 11" J. Pine stub N78E 22.2' scribed 20" J. Pine N01W 87.8' blaze overgrown Blazed and scribed the following: 8" J. Pine S14E 86.3'      "S11 N8T" Bearings are magnetic.
---	---

Bearings are magnetic.



Signed by Stephan J. Szyszkoski Date Sept. 3, 1996  
 Surveyor's Michigan License No. 33986