

LAND CORNER RECORDATION CERTIFICATE
Filing Requirement of Act 74, Mich. P.A. 1970

For corners in <u>Dickinson</u> <small>(County)</small>	Located In:	Corner Code #
1. Public Land Survey	T 44R 29N	M5
	T 44R 29N	K4
	T R	
	T R	
2. Property Controlling in Section	S T R	
	S T R	
3. Miscellaneous Property in Sec.	S T R	
	S T R	

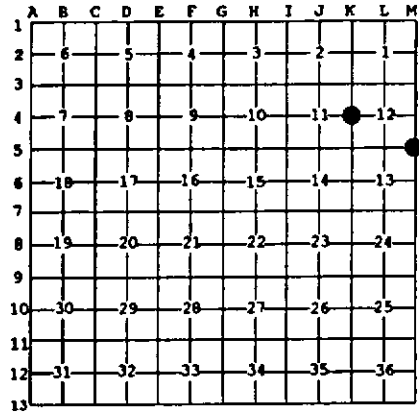
Register of Deeds Stamp & File Number

4. Lot No. _____, Recorded Plat _____
5. Private Claims _____

K4 Jul 17 1996
M5 Mar 28 1996

I, Stephan J. Szyszkoski, in a field survey on _____, 19____ do hereby state that under requirements of P.A. 74, Michigan P.A. of 1970, the corner points mentioned in lines 1 and 2 above were in conformance with regulations and rules therefore as required in the current manual of survey instructions of the United States Department of the Interior, Bureau of Land Management or by a decree of a Court of Law and for that the corner points mentioned in lines 3, 4 and 5 above were in conformance with the rules of the Michigan Board of Land Surveyors or by a Decree of a Court of Law; established, re-established, monumented, recovered, found as expressed below:

NOTE: Not more than 2 corners, all in the same town and range, may be recorded on this certificate.



A. Description of original monument and accessories and/or subsequent restoration:

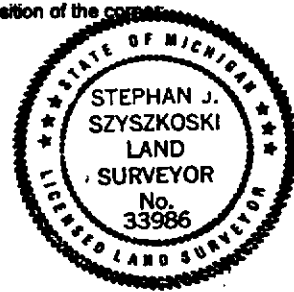
(M5) Corner common to Sections 12-13 T44N-R29N and 7-18 T44N-R28N. Corner monumented in 1963 by Billy D. Buckler, RLS: "This corner was replaced from cedar B.T. 8" N55E 13 links. (Stump leaning with scribe marks visible.) Cedar stump rotted 10" S60W 38 links at proper bearing and distance. Placed 1" iron pipe with 4" aluminum cap. Witnesses: 6" Cedar N70W 57 links, 12" Cedar S33E 54.5 links." Found no subsequent record.
(K4) Quarter corner common to Sections 11-12. Corner established in 1848 by John Burt: "Set cedar Qr. Sect. post...Lynn 18 S69E 23, Ironwood 5 N20W 6". Found no subsequent record.

B. Description of corner evidence found and/or method applied in restoring or reestablishing corner:

(M5) Found Buckler's monument disturbed by a fallen tree. Removed the 1963 monument and placed a new monument at record bearing and distance from Buckler's NBTs, both in good condition. The 1963 NBT cedar SE was then cut down by the undersigned to facilitate GPS observations. Deep snow prevented observation of original BT remains, if any. At the position for the corner, I placed a 1" I.D. x 32" iron pipe capped with a 4" dia. cast aluminum MDNR tablet, appropriately stamped. Marked three new witnesses as described below.
(K4) Original post and accessories not recovered. Found no acceptable evidence of the position of the original corner on the ground. Reestablished the corner on a straight line between monumented Section corners 40.094 chains north and south. At the position for the corner, I placed a 1" I.D. x 32" iron pipe capped with a 4" dia. cast aluminum MDNR tablet, appropriately stamped.

C. Description of monument for corner and accessories established to perpetuate locating the position of the corner:

(M5) Set 1" pipe with 4" MDNR cap. Recovered the 1963 witnesses: Cedar N67W 37.6' overgrown blazes Cedar S32E 36.0' cut above BH blaze Blazed and scribed the following: 4" Spruce S02W 29.9' "S13 NBT" 5" leaning Cedar S69E 47.8' "S18 NBT" 16" Cedar N52E 54.5' "S7 NBT" Bearings are magnetic.	(K4) Set 1" pipe with 4" MDNR cap. Blazed and scribed the following new bearing trees: 4" Maple N33W 23.3' "1/4S NBT" 7" W. Spruce N64E 21.2' "1/4S NBT" 4" Maple S22E 23.0' "1/4S NBT" 4" Maple S87W 5.2' "1/4S NBT" Placed a 4" sq'd maple post adjacent. Bearings are magnetic.
--	---



Signed by Stephan J. Szyszkoski Date Sept. 3, 1996
Surveyor's Michigan License No. 33986

For the Michigan Department of Natural Resources - Forest Management Division