

MICHIGAN
DEPARTMENT OF CONSERVATION
FORESTRY DIVISION

LAND CORNER RECORD

T. 44 N.R. 29W

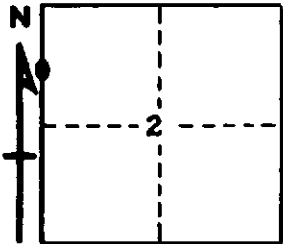
Dickinson COUNTY

DESCRIPTION OF CORNER North 1/16 Corner bet. Secs. 2-3.

CORNER MONUMENT 1" Pipe with 4" Aluminum Cap.

DATE MONUMENT PLACED AND WITNESSED 9-17-63

WITNESSES TO CORNER..... 9" Jackpine (N. 1/16 B.T.) N. 65° W., 37 lks.



8" Jackpine (N. 1/16 B.T.) S. 71° E., 19 lks.

AND

CIRCLE CORNER REGISTERED

DESCRIPTION IN DETAIL AS TO HOW CORNER WAS LOCATED AND IDENTIFIED OR RESTORED.

This Corner was placed by Proportionate measure bet. Sec. Cor.
to North and $\frac{1}{4}$ Cor. to South.

SURVEYOR'S SEAL

SIGNED Billy D. Buckles DATE 3/5/65
REGISTERED LAND SURVEYOR