

SURVEY & REMONUMENTATION

LAND CORNER RECORDATION CERTIFICATE

RECORDED

For corners in **MAR 03 1998**

Filing Requirement of Act 74, Mich. P.A. 1970

1997 DEC 10 AM 8:07

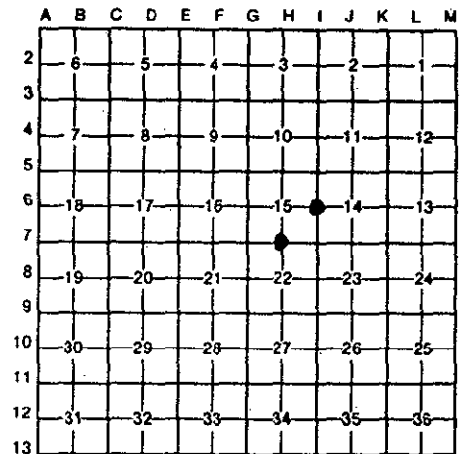
Dickinson Located In: Corner Code I-6 & H-7
 (County) Sagola Twp. SECTION _____

1. Public Land Survey	T <u>44N</u> R <u>30W</u>	<u>I-6 & H-7</u>
	T _____ R _____	_____
	T _____ R _____	_____
	T _____ R _____	_____
2. Property Controlling in Section	S _____ T _____ R _____	_____
	S _____ T _____ R _____	_____
3. Miscellaneous Property in Sec.	S _____ T _____ R _____	_____
	S _____ T _____ R _____	_____

REGISTER OF DEEDS
 DICKINSON COUNTY
 RON MULLER, CLERK

Register of Deeds Stamp & File Number

4. Lot No. _____, Recorded Plat _____
 5. Private Claims _____



I, Edward Kazianka, in a field survey on November 6, 1997, do hereby certify that under requirements of P.A. 74, Michigan P.A. of 1970, the corner points mentioned in lines 1 and 2 above were in conformance with regulations and rules therefore as required in the current manual of survey instructions of the United States Department of the Interior, Bureau of Land Management or by a decree of a Court of Law and/or that the corner points mentioned in lines 3, 4 and 5 above were in conformance with the rules of the Michigan Board of Land Surveyors or by a Decree of a Court of Law, established, re-established, monumented, re-monumented, recovered, found as expressed below:

NOTE: Not more than 4 corners, all in the same town and range, may be recorded on this certificate.

A. Description of original monument and accessories and/or subsequent restoration:

I-6 $\frac{1}{4}$ Corner btween Section 14 & 15.
 Post set by J. Burt, D.S. in September 1848
 Cedar 16 S50W 24 lks. Hemlock 16 N65E 28 lks.
 H-7 $\frac{1}{4}$ Corner between Sections 15 & 22.
 Post set by J. Burt, D.S. in September 1848.
 Spruce 5 S46E 13 lks. Tamarack 5 N51W 15 lks.

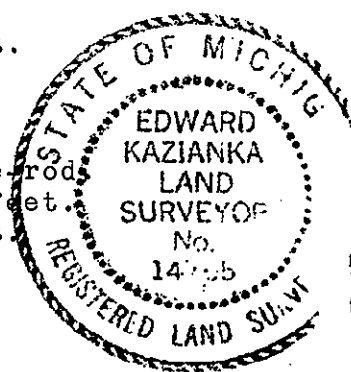
ACCEPTED BY THE DICKINSON COUNTY SURVEY PEER GROUP AS THE OFFICIAL CORNER UNDER MICHIGAN PUBLIC ACT 345 OF 1990 AT A MEETING HELD ON 12-9-97
ROIP
 COUNTY REPRESENTATIVE

B. Description of corner evidence found and/or method applied in restoring or reestablishing corner:

I-6 No evidence of the Original Corner or Accessories found, thus set the Quarter Corner by single proportionate measurement. Section corners $\frac{1}{2}$ mile north and south are set with a distance of 5,271.32 feet between them. Set the Quarter Corner at the mid-point and on line between them.
 H-7 No evidence of the Original Corner or Accessories found, thus set the Quarter Corner by single proportionate measurement. Section corners $\frac{1}{2}$ mile east and west are set with a distance of 5,297.38 feet between them. Set the Quarter Corner at the mid-point and on line between them.

C. Description of monument for corner and accessories established to perpetuate locating the position of the corner:

I-6 Set 2 $\frac{1}{2}$ " Dickinson County Remon. Corner.
 Y. Birch 8 S32W 18.57 feet. Maple 11 N35W 57.78 feet.
 Maple 11 N72E 7.60 feet. Maple 10 S15E 32.20 feet.
 Carsonite Marker South 3.0 feet.
 H-7 Set 2 $\frac{1}{2}$ " Dickinson County Remon. cap on a four foot $\frac{3}{4}$ " re-rod.
 Tamarack 9 S32E 134.45 feet. Tamarack 3 N29E 35.45 feet.
 Tamarack 3 N31W 49.60 feet. Spruce 8 N55W 75.55 feet.
 Carsonite Marker South 3.0 feet.



Bearings are magnetic.

Signed by Edward Kazianka Date Dec. 10, 1997
 Surveyor's Michigan License No. 14765