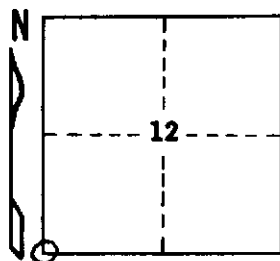


STATE OF MICHIGAN  
DEPARTMENT  
OF  
NATURAL RESOURCES

LAND CORNER RECORD

Dickinson COUNTY  
T 44N R 30W

DESCRIPTION OF CORNER Section Corner 11, 12, 13, and 14  
CORNER MONUMENT 1" I.D. x 36" iron pipe with 4" aluminum cap.  
DATE MONUMENT PLACED AND WITNESSED May 6, 1970  
WITNESSES TO CORNER..... Cherry 9 N66°W (mag.) 16.2 ft. "S11, NBT"



Y. Pine stub, 15" x 10', S64½°W (mag.) 95.7 ft. "S14, NBT"

AND

CIRCLE CORNER REGISTERED

DESCRIPTION IN DETAIL AS TO HOW CORNER WAS LOCATED AND IDENTIFIED OR RESTORED.

Corner placed from stump of a probable Y. Pine 18 BT. Corner position falls N0°01'E (by solar observation) 39.977 chains from an original 1/4' corner bet. Sec. 13 and 14, the record bearing and distance being North 40.00 chains. Also checks well proportionately with original corners 1 mile to E, W, and N. Found a 1" I.D. iron pipe with marked pipe cap, purporting to be this corner, bearing S85°E 84 links, possibly set by traverse from another corner by the State Highway Department in the mid-1930's. Could find no definite information on it, but could find nothing on the ground to support it as the corner location.

SURVEYOR'S SEAL

DISTRIBUTION:

SIGNED

Arthur O. Enger  
REGISTERED LAND SURVEYOR  
Arthur O. Enger

DATE April 19, 1972

County Courthouse  
Area Forester (Regions I & II)  
District or Region Surveyor  
Forestry Div., Lansing

R 4047  
Rev. 10/68