

STATE OF MICHIGAN
DEPARTMENT
OF
NATURAL RESOURCES

LAND CORNER RECORD

Dickinson COUNTY

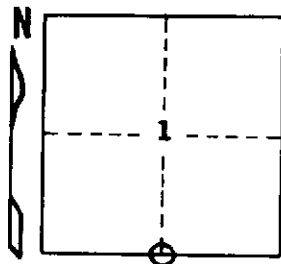
T 44N R 30W

DESCRIPTION OF CORNER 1/4 corner between Sections 1 and 12

CORNER MONUMENT 1" I.D. x 36" iron pipe with 4" aluminum cap

DATE MONUMENT PLACED AND WITNESSED May 12, 1970

WITNESSES TO CORNER..... Red Maple 4 N32°W (mag.) 29.9 ft. "1/4S, NBT"



Red Maple 5 S72°W (mag.) 13.0 ft. "1/4S, NBT"

AND

CIRCLE CORNER REGISTERED

DESCRIPTION IN DETAIL AS TO HOW CORNER WAS LOCATED AND IDENTIFIED OR RESTORED.

Corner re-established proportionately on line between section corners
40.14 ch. W and 40.13 ch. E. Many old pine stumps in vicinity, but could
find none that corresponded to the original BT's.

Variation 1°00' East.

SURVEYOR'S SEAL

DISTRIBUTION:

SIGNED

Arthur O. Enger
REGISTERED LAND SURVEYOR

DATE

April 19, 1972

Arthur O. Enger

County Courthouse
Area Forester (Regions I & II)
District or Region Surveyor
Forestry Div., Lansing

R 4047
Rev. 10/68