

APR 27 1995

COMMISSION

LAND CORNER RECORDATION CERTIFICATE
Filing Requirement of Act 74, Mich. P.A. 1970

FILED

copy

94 NOV 30 AM 9:11

For corners in

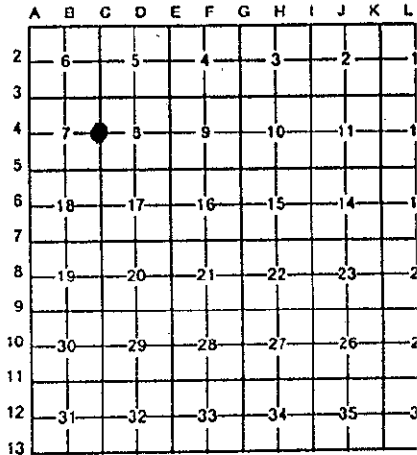
<u>EATON</u> (County)	Located In:	Corner Code #
1. <u>HAMLIN TOWNSHIP</u> Public Land Survey	T <u>1N</u> R <u>3W</u>	<u>C-4</u>
	T _____ R _____	_____
	T _____ R _____	_____
	T _____ R _____	_____
2. Property Controlling in Section	S _____ T _____ R _____	_____
	S _____ T _____ R _____	_____
3. Miscellaneous Property in Sec.	S _____ T _____ R _____	_____
	S _____ T _____ R _____	_____

LINDA M. TWITCHELL
REGISTER OF DEEDS
EATON COUNTY, MICH.

LIBER 3 Pg 529

Register of Deeds Stamp & File Number

- 4. Lot No. _____, Recorded Plat _____
- 5. Private Claims _____



I, D.L. Clifford, in a field survey on July 23, 19 94, do hereby certify that under requirements of P.A. 74, Michigan P.A. of 1970, the corner points mentioned in lines 1 and 2 above were in conformance with regulations and rules therefore as required in the current manual of survey instructions of the United States Department of the Interior, Bureau of Land Management or by a decree of a Court of Law and/or that the corner points mentioned in lines 3, 4 and 5 above were in conformance with the rules of the Michigan Board of Land Surveyors or by a Decree of a Court of Law; established, re-established, monumented, re-monumented, recovered, found as expressed below:

NOTE: Not more than 4 corners, all in the same town and range, may be recorded on this certificate.

A. Description of original monument and accessories and/or subsequent restoration:

- 1. Post set in original government survey by Hervey Parke DS in Mar. 1826.
- 2. No record exists in the records of the County Surveyor concerning this corner.

(OVER)

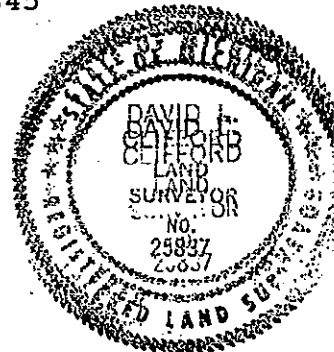
B. Description of corner evidence found and/or method applied in restoring or reestablishing corner:

Searched at apparent location of corner and found R. Keller's 1/2" Bar and cap on the West side of an anchor post in a circle of stones. Although there is no record of preservation of corner by the County Surveyors Office it is obvious by the monumentation of this corner and the corner adjacent to the West (Plow point at the Center of Section (B-4) that there has been some historical use of these corners. Accepted Bar & Cap as perpetuation of corner and replaced with Standard Bar & Cap. Measured South 2648.72' to C-5. Measured North 2650.21' to C-3. Measured East 2646.88' to B-4.

C. Description of monument for corner and accessories established to perpetuate locating the position of the corner:

Standard 3/4"X24" Eaton County Remonumentation Bar with PA 345 Cap PS # 25837 @ West side anchor post.

- Nail & Tag #28409 in East side 8" Pine NAZ 227° 44.20'
- Nail & Tag #28409 in West side 8" Cherry NAZ 181° 44.10'
- Nail & Tag #28409 in S.W. side 8" Basswood NAZ 130° 54.07'
- Nail & Tag #28409 in North side 40" Maple NAZ 88° 94.26'



Signed by David Clifford Date August 23, 1994

Surveyor's Michigan License No. 25837 P.A. 345 EATON COUNTY

PEER-APPROVED 8/24/94 M

LIBER 3 Pg 530

3. Ronald W. Keller LS #20707 used corner in Oct. 1975 (L.3, Pg. 53)
Set capped iron (Act 132 Survey)

East 10" Elm 50.2'
South 8" Cherry 44.0
S30W 2" Pine 44.2'
S45W 8" Pine 64.1'

4. Larry Bryan LS #25832 recorded corner in Mar. 1985 (L2 pg
pg. 960) as a found 1/2" Bar & Cap from L.3 of surveys pg.
53.

Found nail & washer 10" Elm East 50.21'
Found nail & washer 8" Cherry South 44.08'
Found nail & washer 2" Pine S30W 44.20'

