

DEC 1 5 1995

COMMISSION

EATON COUNTY REMONUMENTATION

LAND CORNER RECORDATION CERTIFICATE
Filing Requirement of Act 74, Mich. P.A. 1970

96 OCT -9 PM 12: 19

FILED

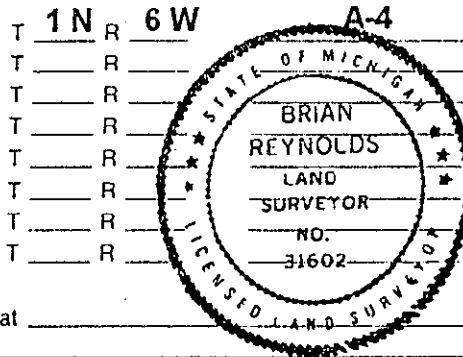
copy

For corners in EATON (County)

Located In: Corner Code #/

LINDA M. TWITCHELL REGISTER OF DEEDS EATON COUNTY, MICH.

1. Public Land Survey WEST 1/4 CORNER SECTION 7 BELLEVUE TOWNSHIP



h.3 pg 700

2. Property Controlling in Section
3. Miscellaneous Property in Sec.

S T R
S T R
S T R
S T R

Register of Deeds Stamp & File Number

4. Lot No. , Recorded Plat
5. Private Claims

Grid table with columns A-M and rows 2-13, containing numbers 1-36.

BRIAN REYNOLDS

APRIL 26

96

I, in a field survey on , 19 do hereby certify that under requirements of P.A. 74, Michigan P.A. of 1970, the corner points mentioned in lines 1 and 2 above were in conformance with regulations and rules therefor as required in the current manual of survey instructions of the United States Department of the Interior, Bureau of Land Management or by a decree of a Court of Law and/or that the corner points mentioned in lines 3, 4 and 5 above were in conformance with the rules of the Michigan Board of Land Surveyors or by a Decree of a Court of Law, established, re-established, monumented, re-monumented, recovered, found as expressed below:

NOTE: Not more than 4 corners, all in the same town and range, may be recorded on this certificate.

A. Description of original monument and accessories and/or subsequent restoration:

- 1. CORNER NOT SET BY GENERAL LAND OFFICE SURVEY. HOWEVER, GLO JOG AT A-3 IS REPORTED 21 LINKS (13.86 FEET) N. OF STANDARD CORNER, AT A-5 JOG IS 16 LINKS (9.8 FEET) N. OF STANDARD CORNER. IMPLIED JOG WOULD BE 11.88 FEET N. OF STANDARD CORNER.
2. SURVEY OF SECTION 7 BY COUNTY SURVEYOR FRANK DAVIS, MAY 1870, COUNTY SURVEYOR RECORDS VOLUME 1, PAGES 106-107, "STONE WITH CROSS. HICKORY 8 S47 1/2W 72 LKS NOT MARKED" DAVIS INDICATES 40.24 CHS. TO A-3, 40.14 CHS. TO A-5, 42.47 CHS. TO B-4.
3. LAND CORNER RECORDATION CERTIFICATE, LIBER 2, PAGE 786, BY ROBERT R. CARR, PS#20704, 22 DECEMBER, 1981 "STONE AND WITNESSES GONE. SET CORNER AT BI-SECTION OF WEST SECTION LINE" 1/2"x18" RE-ROD; 24" ASH, N20°E, 88.88"; 6" ASH, S30°E, 63.62"; 1.5"+/- EAST OF CENTERLINE OF CURTIS ROAD; 10'+/- NORTH OF CENTERLINE EDDY ROAD; 54'+/- SOUTH OF CENTERLINE STONEY POINT ROAD.
4. ACT 132 SURVEY BY ROBERT R. CARR, PS#20704, LIBER 3 OF SURVEYS, PAGE 416, DATED DEC. 22, 1981, RECORDED APR. 7, 1982, RECITES 1/2" IRON AND BOTH ASH WITNESSES FROM LCRC, ITEM #3 ABOVE.
5. 2 UNRECORDED SURVEYS BY ROBERT R. CARR, PS#20704, KING & CARR, INC. JOB #81685 AND #83705, SAME MONUMENT AND WITNESSES AS ITEM #4 ABOVE.
6. PRIVATE NOTES OF CARR & ASSOCIATES, DATED 8-6-92, "W 1/4, SEC 7; TW 4"-6" HICKORY N35W 69.16; CTR MBT RIZER N45E 34.4; 6" HICKORY S60+/-W 69.9'; 12'+/- N OF C/L EDDY RD.; 54'+/- S OF C/L STONY POINT HWY.

B. Description of corner evidence found and/or method applied in restoring or reestablishing corner:
FOUND IRON AND HICKORY WITNESSES BY CARR, ITEM 6 ABOVE, ASH WITNESSES IN ITEMS 3-5 ABOVE ARE GONE. ALSO FOUND 1/2" UNCAPPED IRON AT APPARENT M-4 T1N R7W, 12.03 FEET SOUTH OF IRON BY CARR. THE POSITION RECORDED BY CARR IS AT BI-SECTION OF LINE FROM RESTORED A-3 TO A-5, WITH CLOSING CORNERS SET AT OR NEAR THE GENERAL LAND OFFICE SURVEY JOG DISTANCE FROM APPARENT STANDARD CORNER POSITIONS. THE JOG DISTANCES REPORTED BY GLO (ITEM 1 ABOVE) AND DAVIS 1870 (ITEM 2 ABOVE) ARE PROFOUNDLY DIFFERENT. TRAVERSED ENTIRE SECTION 7, TYING IN OCCUPATION LINES AS INDICATED BY DAVIS SURVEY (ITEM 2 ABOVE). OCCUPATION LINES LEAD TO A POSITION 80+/- FEET NORTH OF THE CORRESPONDING BARRY CORNER, OR 70+/- FEET NORTH OF THE POSITION RECORDED BY CARR. EXCAVATED AT STANDARD CORNER LOCATION (FOUND IRON), AT LOCATION RECORDED BY CARR, AND 80+/- FEET NORTH OF STANDARD CORNER, EACH EXCAVATION WITH BACKHOE, EACH 8'+ E-W AND 15'+ N-S, EACH TO A DEPTH OF 3+', FOUND NO ADDITIONAL PHYSICAL EVIDENCE OF PREVIOUS MONUMENTATION. IT APPEARS THAT THE JOG DISTANCES REPORTED BY EVANS AT A-3 AND A-5 (AS WELL AS THE CLOSING FRACTIONAL DISTANCES) WERE FRAUDULENT. CONCLUDED THAT BEST METHOD OF RESTORATION IS TO SET CORNER AT PRORATION OF DISTANCES ALONG RANGE LINE REPORTED BY DAVIS FROM A-3 AND A-5 AS RESTORED IN REFERENCE TO DAVIS SURVEY. DISREGARDED POSITION RECORDED BY CARR, SET STANDARD EATON COUNTY MONUMENT 69.66 FEET NORTH OF STANDARD CORNER, ON RANGE LINE, IN CLOSE CONFORMANCE WITH OCCUPATION LINES THROUGHOUT SECTION 7.

C. Description of monument for corner and accessories established to perpetuate locating the position of the corner:

SET EATON COUNTY REMONUMENTATION MONUMENT (3/4"x24" SOLID IRON WITH PLASTIC CAP STAMPED "ACT 345 31602")
SET 20d NAIL W/PLASTIC TAG IN THE NORTH SIDE OF A 4"-6" HICKORY CLUSTER N59°W 34.65'
SET 20d NAIL W/PLASTIC TAG IN THE NORTH SIDE OF A 4" HICKORY N74°W 29.60'
SET 20d NAIL W/PLASTIC TAG IN THE NORTH SIDE OF A 5" HICKORY S87°W 26.08'
SET 20d NAIL W/PLASTIC TAG IN THE SOUTH SIDE OF A 4" HICKORY S80°W 27.81'
CENTERLINE OF GRAVEL ROAD WEST LIES SOUTH 85'+/- CENTERLINE OF GRAVEL ROAD EAST LIES SOUTH 19'+/-
M-4 T 1 N, R 7 W, ASSYRIA TOWNSHIP LIES SOUTH 85.03'
SEE REVERSE OF THIS FORM FOR RELATIVE POSITION OF NEARBY GRID CORNERS

Signed by [Signature]

Date JUNE 24, 1996

Surveyor's Michigan License No. 31602

RELATIVE POSITION OF CORNERS NO SCALE

L.3 Pg. 701

NOTE: STANDARD CORNER M-2 NOT RECOVERABLE (OCCUPIED BY DRAINAGE CULVERT). CLOSING CORNER A-2 UNLIKELY TO BE RECOVERED.

