

FILED
copy

EATON COUNTY REMONUMENTATION
LAND CORNER RECORDATION CERTIFICATE
Filing Requirement of Act 74, Mich. P.A. 1970

95 DEC 26 PM 2:31

For corners in

EATON
(County)

Located In:

Corner Code #

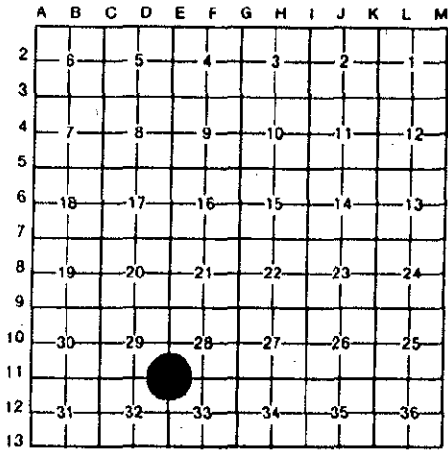
LINDA M. TWITCHELL
REGISTER OF DEEDS
EATON COUNTY, MICH.

- 1. Public Land Survey T 4N R 6W E-11
- SUNFIELD TWSP. T _____ R _____
- COR. SEC. 28,29,32 & 33 T _____ R _____
- 2. Property Controlling S _____ T _____ R _____
- in Section S _____ T _____ R _____
- 3. Miscellaneous S _____ T _____ R _____
- Property in Sec. S _____ T _____ R _____

L.3 pg. 669

Register of Deeds Stamp & File Number

- 4. Lot No. _____, Recorded Plat _____
- 5. Private Claims _____



I, BRIAN REYNOLDS, in a field survey on 21 JULY, 19 94, do hereby certify that under requirements of P.A. 74, Michigan P.A. of 1970, the corner points mentioned in lines 1 and 2 above were in conformance with regulations and rules therefore as required in the current manual of survey instructions of the United States Department of the Interior, Bureau of Land Management or by a decree of a Court of Law and/or that the corner points mentioned in lines 3, 4 and 5 above were in conformance with the rules of the Michigan Board of Land Surveyors or by a Decree of a Court of Law; established, re-established, monumented, re-monumented, recovered, found as expressed below:

NOTE: Not more than 4 corners, all in the same town and range, may be recorded on this certificate.

- A. Description of original monument and accessories and/or subsequent restoration:
1. GENERAL LAND OFFICE: ORANGE RISDON D.S., MAY 1827, ELM 12 S 4; BEECH 18 N 40
 2. COUNTY SURVEYOR (DATED APRIL 1868, UNSIGNED, VOL 1, P. 16) SURVEY OF SECTION 32, "S+" NO WITNESSES, DISTANCE TO E-12 RECITED AS 39.92 1/2 CHAINS (2635.05 FEET)
 3. COUNTY SURVEYOR (DATED APRIL 1868, UNSIGNED, VOL 1, P. 17) SURVEY OF SECTION 33, "S&C+" NO WITNESSES, DISTANCE TO E-12 RECITED AS 39.92 1/2 CHAINS (2635.05 FEET)
 4. COUNTY SURVEYOR FRANK J. DAVIS: "STONE & C.", OCT. 1868 SURVEY OF SECTION 28, VOL. 1, P. 30
 5. COUNTY SURVEYOR FRANK J. DAVIS: "STONE & C.", DEC 27, 1869 SURVEY OF S 1/2 OF SW 1/4, SECTION 28, VOL. 1, P. 76-77, NO MONUMENT OR WITNESSES RECITED; HOWEVER, THE 1/4 MILE DISTANCE EAST IS SHOWN AS 19.89 CHAINS (1312.74 FEET)
 6. COUNTY SURVEYOR OSCAR C. CHURCH: ; ESTABLISHED COR. SET STONE & CR., MAY 5, 1874 SURVEY OF SECTION 29, VOL. 1, P. 200-201, DISTANCE TO D-11 RECITED AS 40.11 CHAINS (2647.26 FEET), DISTANCE TO E-10 RECITED AS 40.08 CHAINS (2645.28 FEET).
 7. 1919 ROAD IMPROVEMENT CONSTRUCTION PLANS SHOW "SEC. COR. (APPROX) AT INTERSECTION OF CENTERLINES. PROBABLY SURVEYED BY H.A. WILLIAMS. APPARENTLY WILLIAMS WAS UNABLE TO LOCATE MONUMENT.
 8. PRIVATE NOTES OF RAY MOORED (PS#26463) "FOUND PK NAIL, WORKS WELL WITH OCCUPATION EAST"
- B. Description of corner evidence found and/or method applied in restoring or reestablishing corner:

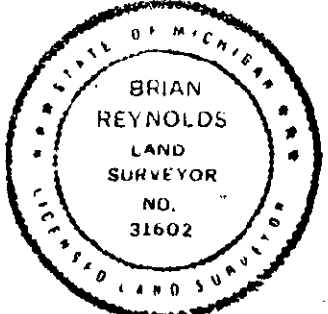
PRELIMINARY FIELD CHECK: FOUND P.K. NAIL (OCCUPATION TIE FROM PREVIOUS REMON TRAVERSE WORK) AT INTERSECTION OF CENTERLINES OF IONIA ROAD AND BISMARCK HWY. REMOVED NAIL AND CHECKED FOR MAGNETIC PULL WITH NO RESULTS; REPLACED NAIL. CHECKED WITH RAY MOORED (PS#26463), FOUND THAT HE HAD USED P.K. FOR SW. CORNER OF SECTION 28 SUNFIELD ON SURVEY WORK IN THAT SECTION. RAY ALSO STATED THAT P.K. POSITION WORKED WELL WITH OTHER MEASUREMENTS IN SECTION 28. MOORED'S NOTES SHOW A MEASURED DISTANCE OF 5264.05' FOR THE MILE EAST OF P.K. AND A 1/2 MILE DISTANCE OF 2633.06'. THE 1/2 MILE DISTANCE NORTH IS 2644.64', WITH THE FOLLOWING NORTH 1/2 MILE DISTANCE BEING 2647.35' WITH A DEFLECTION AT THE 1/4 CORNER OF +/- 12 MINUTES. CHECKED DISTANCE TO OCCUPATION 1/4 MILE EAST, MEASURED 1316'+/- CHECKED REASONABLY WELL WITH ITEMS #4 AND #5 IN PART "A" ABOVE. EXCAVATED A 4' BY 4' AREA CENTERED AT P.K. NAIL THROUGH 2.5' OF FILL AND 1.5' OF NATURAL GRADE AND FOUND NOTHING. ACCEPTED OCCUPIED INTERSECTION OF CENTERLINES AS REPRESENTED BY FOUND P.K. NAIL AS BEST LOCATION FOR CORNER. SET STANDARD EATON Co. REMON. IRON (3/4" x 24" WITH ORANGE PLASTIC CAP " PA 345 #31602") INSTALLED MON. BOX.

- TO E-10 N0°26'05"E 2644.49'
- TO D-11 N89°47'54"W 2629.18'
- TO E-12 S0°13'26"W 2650.33'

C. Description of monument for corner and accessories established to perpetuate locating the position of the corner:

FOUND P.K. NAIL. REPLACED WITH STANDARD EATON Co. REMON. IRON (3/4"x 24" WITH ORANGE PLASTIC CAP "PA 345 #31602) AND INSTALLED MON. BOX:

- ON CENTERLINE NORTH, SOUTH, EAST AND WEST
- NW. CORNER OF HOUSE #9012 - N38E - 176.50'
- SET 5" SPIKE & ORANGE PLASTIC "REYNOLDS #31602" TAG N. SIDE UTILITY POLE N58E 65.96'
- SET 5" SPIKE & ORANGE PLASTIC "REYNOLDS #31602" TAG NE. SIDE UTILITY POLE S36E 72.25'
- SET 5" SPIKE & ORANGE PLASTIC "REYNOLDS #31602" TAG NW. SIDE UTILITY POLE S44W 90.78'
- SET 5" SPIKE & ORANGE PLASTIC "REYNOLDS #31602" TAG SE. FACE DECIDUOUS TREE S62W 77.26'



Signed by Brian Reynolds

Date 12/21/95

Surveyor's Michigan License No. 31602

APPROVED BY MICHIGAN STATE BOARD OF LAND SURVEYORS, JAN. 28, 1971
 REVISOR MAY 14, 1975
 REVISOR JAN., 1983

P.A. 345 EATON COUNTY
 PEER APPROVED 8/3/95