

DEC 17 1998

LAND CORNER RECORDATION CERTIFICATE
Filing Requirement of Act 74, Mich. P.A. 1970

Copy
98 NOV 10 PM 12: 20

SECTION

For Corners in EATON Located In: _____ Corner Code # _____
(county)

1. Public Land Survey T 4N R 6W G-9
CORNER COMMON TO T _____ R _____
SECTIONS 21, 22, 27 & 29 T _____ R _____
SUNFIELD TOWNSHIP T _____ R _____

2. Property Controlling S _____ T _____ R _____
in Section S _____ T _____ R _____

3. Miscellaneous S _____ T _____ R _____

4. Lot No _____, Recorded Plat _____

5. Private Claims _____

LINDA M. TWITCHELL
REGISTER OF DEEDS
EATON COUNTY, MICH.

LIBER 3 PAGE 972

Register of Deeds Stamp & File Number

	A	B	C	D	E	F	G	H	I	J	K	L	M
1													
2	6		5		4		3		2		1		
3													
4	7		8		9		10		11		12		
5													
6	18		17		16		15		14		13		
7													
8	19		20		21		22		23		24		
9													
10	30		29		28		27		26		25		
11													
12	31		32		33		34		35		36		
13													

I, Brian Reynolds, in a field survey on 9 MAY, 1998 do hereby certify that under requirements of P.A. 74, Michigan P.A. of 1970, the corner points mentioned in lines 1 and 2 above were in conformance with regulations and rules therefore as required in the current manual of survey instructions of the United States Department of the Interior, Bureau of Land Management or by a decree of a Court of Law and/or that the corner points mentioned in lines 3, 4, and 5 above were in conformance with the rules of the Michigan Board of Land Surveyors or by a Decree of a Court of Law; established, re-established, monumented, re-monumented, recovered, found as expressed below.

NOTE: Not more than 2 corners, all in the same town and range, may be recorded on this certificate.

A. Description of original monument and accessories and/or subsequent restoration:

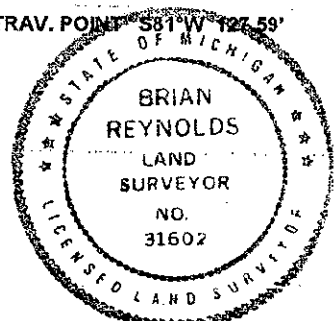
- GENERAL LAND OFFICE: ORANGE RISDON, D.S., 1827 (R6W, P.620) "SET POST COR. SEC. 27, 28, 33 & 34" SUGAR 12 N82E 20 Do. 18 N70W 11
- COUNTY SURVEYOR RECORDS: M.H. BAILEY, 15,16,17 DEC. 1880 (V.1,P.142-143) "STONE, BRICK, CROCKERY" NO WITNESSES
- COUNTY SURVEYOR RECORDS: M.E. NEWCOMB, MAY 1909 (V. 5, P.44) "LARGE STONE" FNC. POST SE'LY 38.94 FEET FNC. POST SW'LY 36.28 FEET
- LAND CORNER RECORDATION CERTIFICATE: BY JAMES STEPHENS, P.S., #16053, 24 JAN., 1974 (L.2, P.18) "A 1/4 INCH IRON PIPE WAS SET IN THE CENTERLINES OF THE SECTION LINE ROADS (Mt HOPE HWY. AND ROUND LAKE ROAD)." SURVEY TAG ON THE NORTH SIDE OF A UTILITY POLE S46°02'E 47.44 FEET SURVEY TAG ON THE NORTH SIDE OF A UTILITY POLE S41°59'W 46.80 FEET S7°47'W 167.85 FEET TO THE NORTH SIDE FENCE ANCHOR POST
- LAND CORNER RECORDATION CERTIFICATE: BY RICHARD STEADMAN, P.S., #11370, 29 DEC., 1976 (L.2, P.595) "DROVE 1/4" IRON ROD ALONGSIDE STONE AT MEASUREMENTS FROM NEWCOMB'S FENCE POST WITNESSES." POWER POLE S46°E 47.50 Ft. TELEPHONE POLE S45°W 44.65 Ft. C/L OF STOP SIGN N25°W 32.85 Ft.
- ACT 132 SURVEY: BY MARVIN FOUTY, P.S., #18989, 7 JULY, 1977 (L.3, P.141) "FND. 1/4" PIPE FROM WITNESSES" TAG N. SIDE UTIL. POLE SE 47.44' TAG N. SIDE UTIL. POLE SW 46.80' N. SIDE ANCHOR POST SSW 167.85'
- COUNTY ROAD COMMISSION: NO NAME/DATE (1-46-30) "SEC. COR OF SEC. 21-22-27-28 LONG STONE (BRICKS - CROCKERY)" FENCE POST SELY 38.45 FENCE POST SWLY 38.28' FENCE POST NELY 43.25'

B. Description of corner evidence found and/or method applied in restoring or reestablishing corner:

FOUND 1 1/4" SOLID IRON BY STEADMAN (#5 ABOVE, ALL WITNESSES GONE). FOUND 1/4" PIPE BY STEPHENS (#4 ABOVE, ONE WITNESS REMAINING, FENCE ANCHOR POST) AND USED BY FOUTY (ONE REMAINING WITNESSES FROM FOUTY, FENCE ANCHOR POST, #6 ABOVE). EXCAVATED AT BOTH POSITIONS TO A DEPTH OF 2.5'+/- FOUND 14" x 10" x 10" STONE NEXT TO STEADMAN'S IRON. EXCAVATED FURTHER AT STEADMAN'S POSITION, FOUND ANOTHER LARGER STONE, ABOUT 20"X10"X8" SURROUNDED BY SMALLER STONES, A SMALL QUANTITY OF CROCKERY AND A BADLY DECOMPOSED PIECE OF IRON VERY CLOSE TO STEADMAN'S POSITION. ACCEPTED FOUND STONE, CROCKERY & IRON AS CORNER BY COUNTY SURVEYOR BAILEY. DISREGARDED POSITION BY RECORDED BY STEPHENS AND USED BY FOUTY. REPLACED FOUND STONE WITH EATON COUNTY REMONUMENTATION MONUMENT.

C. Description of monument for corner and accessories established to perpetuate locating the position of the corner:

SET STANDARD EATON COUNTY REMONUMENTATION MONUMENT (3/4" X 36" IRON) WITH ALUMINUM CAP STAMPED "31602". CORNER LIES ROUGHLY AT THE INTERSECTION OF CENTERLINES OF ROADS NORTH-SOUTH-EAST-WEST FOUND NAIL & METAL TAG IN THE SOUTHWEST SIDE OF A UTILITY POLE S53°E 55.66' SET 1/2" x 18" CAPPED IRON "REYNOLDS TRAV. POINT" S21°W 65.36' SET 1/2" x 18" CAPPED IRON "REYNOLDS TRAV. POINT" S81°W 127.59' WEST EDGE OF A STOP SIGN POST (BASE) SW25°E 40.80' EAST EDGE OF A STOP SIGN POST (BASE) N24°W 35.28' FROM REMONUMENTED G-9 TO REMONUMENTED F-9 N89°09'22"W 2628.51' FROM REMONUMENTED G-9 TO REMONUMENTED G-10 S00°33'16"W 2646.64' FROM REMONUMENTED G-9 TO POSITION RECORDED BY STEPHENS N31°07'E 2.15' FROM REMONUMENTED G-9 TO POSITION ALONG SIDE STONE BY STEADMAN S62°48'W 0.32'



P.A. 345 EATON COUNTY
PEER APPROVED 6/23/98 m

Signed by [Signature]
Surveyor's Michigan License No 31602

Date 11-2-1998