

**SURVEY & REMONUMENTATION**

APR 27 1995

COMMISSION

**LAND CORNER RECORDATION CERTIFICATE**  
Filing Requirement of Act 74, Mich. P.A. 1970

STATE OF MICHIGAN  
EMMET COUNTY  
RECORDED

1994 DEC 27 AM 10:27

For corners in  
EMMET

(County)

Located In:

Corner Code #

1. Public Land Survey	SECTION 02	T 34 N	R 04 W	K3
<i>ECRP #9</i>		T - R -		
		T - R -		
		T - R -		
2. Property Controlling in Section	S - T - R -			
	S - T - R -			
3. Miscellaneous Property in Sec.	S - T - R -			
	S - T - R -			

*Glenn A. Sizer*  
REGISTER OF DEEDS

LIBER A  
PAGE 50

Register of Deeds Stamp & File Number

4. Lot No. \_\_\_\_\_, Recorded Plat \_\_\_\_\_  
5. Private Claims \_\_\_\_\_

I, Michael A. Trowbridge, in a field survey on 12 / 01, 1994, do hereby certify that under requirements of P.A. 74, Michigan P.A. of 1970, the corner points mentioned in lines 1 and 2 above were in conformance with regulations and rules therefore as required in the current manual of survey instructions of the United States Department of the Interior, Bureau of Land Management or by a decree of a Court of Law and/or that the corner points mentioned in lines 3, 4 and 5 above were in conformance with the rules of the Michigan Board of Land Surveyors or by a Decree of a Court of Law; established, re-established, monumented, re-monumented, recovered, found as expressed below:

**NOTE: Not more than 4 corners, all in the same town and range, may be recorded on this certificate.**

A. Description of original monument and accessories and/or subsequent restoration:

K3  
SEE BACK OF THIS FORM FOR CHRONOLOGY

B. Description of corner evidence found and/or method applied in restoring or reestablishing corner:

K3  
FOUND 24" WELL BLAZED HEMLOCK AND WITNESSES PER LIBER 1, PAGE 256, AS STATED IN CHRONOLOGY ON BACK.

I FOUND THIS HEMLOCK TO REPRESENT THE BEST AVAILABLE EVIDENCE FOR THIS CORNER.

C. Description of monument for corner and accessories established to perpetuate locating the position of the corner:

K3... CORNER IS A 24" HEMLOCK... TREE IS DEAD, BUT STILL STANDING.  
SET TWO WITNESS CORNERS, CONSISTING OF A 2" DIAMETER PVC PIPE WITH A BASE MAGNET AND STANDARD BRASS EMMET COUNTY REMONUMENTATION CAP, SET WITNESS CORNERS

..NEW WITNESSES..

- NAIL/CAP# 27463 AZ= 4° 17.17' N.F.C. 8" BEECH
- NAIL/CAP# 27463 AZ= 339° 34.70' E.F.C. 8" BEECH
- NAIL/CAP# 27463 AZ= 270° 43.74' N.F.C. 7" MAPLE
- NAIL/CAP# 27463 AZ= 118° 17.53' E.F.C. 5" BEECH
- NAIL/CAP# 27463 AZ= 53° 40.56' S.F.C. 3" BEECH
- NAIL/CAP# 27463 AZ= 34° 42.75' S.F.C. 7" MAPLE

- 1) N44°52'28"E AT 24.78'
- 2) N46°36'55"W AT 23.91'

NEXT (2) WITNESSES PER L. 1, PG. 256, EMM. CO. RECORDS....

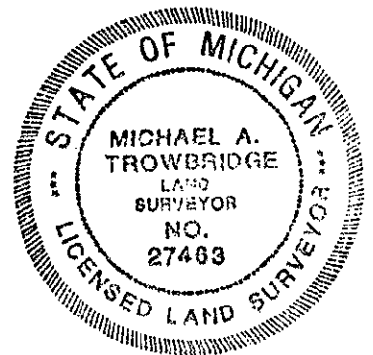
- 1) 5" BEECH N 2°W 17.7'

- 2) 12" HEMLOCK S22°W 13.0' (DEAD BUT STANDING)

- 3) 12" BEECH S75°W 14.4'

Signed by Michael A. Trowbridge Date \_\_\_\_\_  
27463

Surveyor's Michigan License No. \_\_\_\_\_



12-1-94

EMMET COUNTY REMONUMENTATION PROGRAM

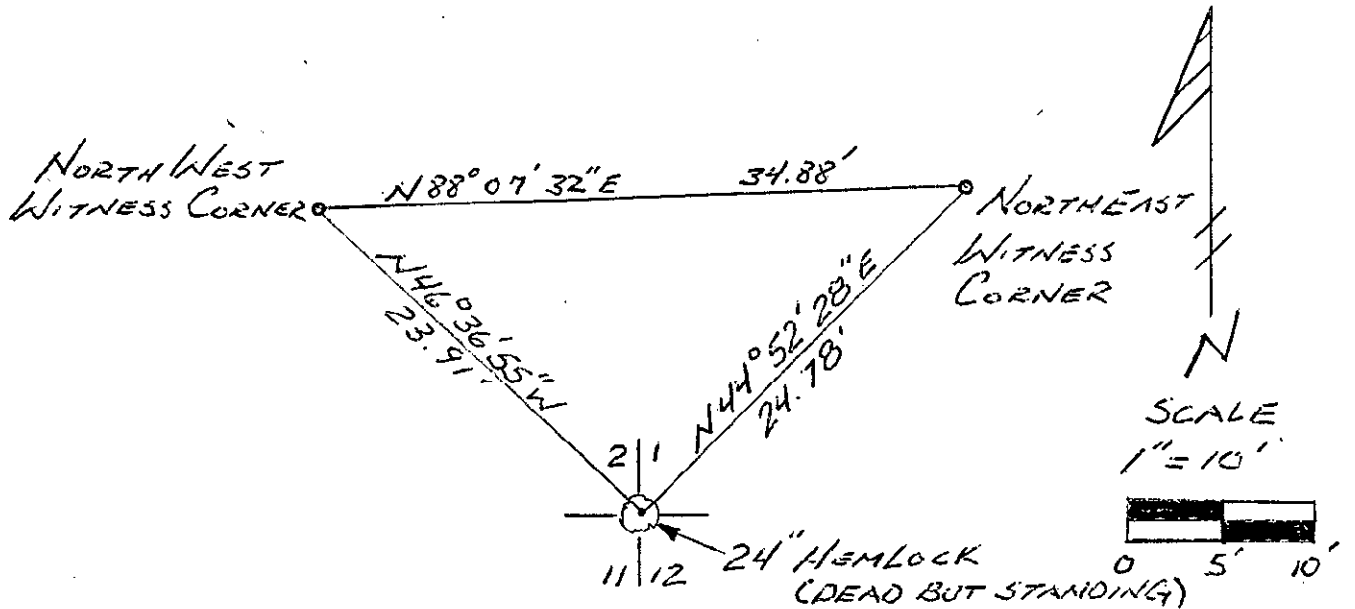
CHRONOLOGY OF GLO CORNER

REMON. CORNER # 9 LCRC # 34-04-K3 TOWNSHIP...SPRINGVALE

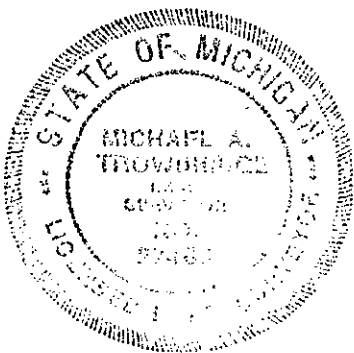
SURVEYOR: MICHAEL A. TROWBRIDGE, PLS # 27463

E.C.R. CONTRACT # 2

DATE	SURVEYOR	FOUND	SET (WITNESSES)
1841	GLO	FOR POST CORNER TO SEC. S 1,2,11, & 12 A HEMLOCK 8 INCHES IN DIAMETER	NO WITNESSES
1901	PALMER LA,P9	FOUND HEMLOCK 16 S.E. CORNER SECTION 2	BEECH 14 BEARS W85N 34 BEECH 16 BEARS W43S 25
1976	L1,P256	FOUND WELL BLAZED 24" HEMLOCK	5" BEECH N2°W 17.7' 12" BEECH S75°W 14.4' 12" HEMLOCK S22°W 13.00'



3404-K3, MAT



*Michael A. Trowbridge*