

MICHIGAN
DEPARTMENT OF CONSERVATION
FORESTRY DIVISION

LAND CORNER RECORD

T. 36 N.R. 5 W.

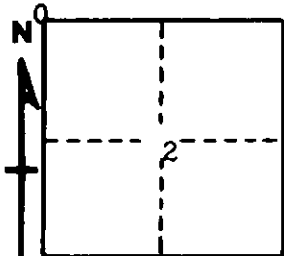
Emmet COUNTY

DESCRIPTION OF CORNER Closing corner common to Sections 2 - 3 on North boundary of township

CORNER MONUMENT Set 1" pipe with 4" brass cap below road surface

DATE MONUMENT PLACED AND WITNESSED June 19, 1962

WITNESSES TO CORNER..... 8" Cedar S 52 W 75.5'



5" Spruce S 56 E 90.7'

AND

CIRCLE CORNER REGISTERED

DESCRIPTION IN DETAIL AS TO HOW CORNER WAS LOCATED AND IDENTIFIED OR RESTORED.

This corner was found while making a survey in this area. Found a 3/4" iron bolt with 1" head at corner, 30" below surface of road. Falls in line with center of road south and in E - W centerline and is concluded to be the closing corner. Identified in 1958 by Emmet County road engineers and used in reconstruction of road south.

Corner to Sections 34 - 35, T 37 N, R 5 W is 10 links east.

SURVEYOR'S SEAL

SIGNED *Kenneth J. Oetting* DATE June 21, 1962
REGISTERED LAND SURVEYOR