

MICHIGAN
DEPARTMENT OF CONSERVATION
FORESTRY DIVISION

LAND CORNER RECORD

T. 36 N. R. 5 W.

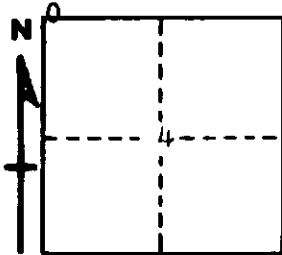
Emmet COUNTY

DESCRIPTION OF CORNER Closing corner common to Sections 4 - 5 on north boundary of township

CORNER MONUMENT Set 1" pipe with 4" brass cap

DATE MONUMENT PLACED AND WITNESSED June 19, 1962

WITNESSES TO CORNER.....



10" Elm S 4 W 43.3'

8" Apple Tree S 66 E 200.3'

AND

CIRCLE CORNER REGISTERED

DESCRIPTION IN DETAIL AS TO HOW CORNER WAS LOCATED AND IDENTIFIED OR RESTORED.

This corner was found while making a survey in this area. Found a 2 1/2" pipe with other pieces of iron at corner, in line with old fence line south and conforming closely with old township road grade west and County road east. Appears to be a good corner of long standing.

Corner to Sections 32 - 33, T 37 N, R 5 W is 8 links east.

SURVEYOR'S SEAL

SIGNED

Kenneth Ostling
REGISTERED LAND SURVEYOR

DATE June 21, 1962