

APR 29 1996

STATE OF MICHIGAN  
EMMET COUNTY  
RECORDED

1995 DEC 19 PM 1:37

COMMISSION LAND CORNER RECORDATION CERTIFICATE  
Filing Requirement of Act 74, Mich. P.A. 1970

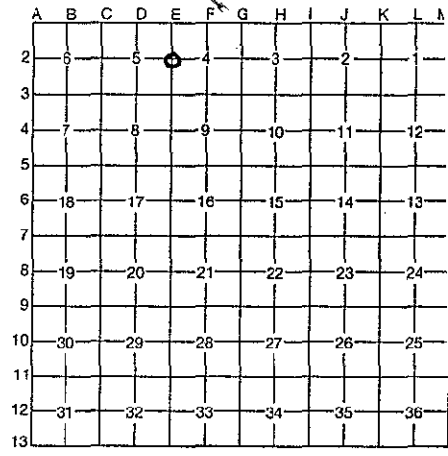
For corners in EMMET (County)	Located In:	Corner Code #
1. Public Land Survey SECTION 4	T 36 N R 4 W	E2
ECRP #84	T _____ R _____	_____
	T _____ R _____	_____
2. Property Controlling in Section	S _____ T _____ R _____	_____
	S _____ T _____ R _____	_____
3. Miscellaneous Property in Section	S _____ T _____ R _____	_____
	S _____ T _____ R _____	_____

*Glenn B. Sizer*  
REGISTER OF DEEDS

LIBER A  
PAGE 79

Register of Deeds Stamp & File Number

4. Lot No. \_\_\_\_\_, Recorded Plat \_\_\_\_\_  
5. Private Claims \_\_\_\_\_



I, Michael A. Trowbridge, in a field survey on 12/8, 1995, do hereby certify that under requirements of P.A. 74, Michigan P.A. of 1970, the corner points mentioned in lines 1 and 2 above were in conformance with regulations and rules therefore as required in the current manual of survey instructions of the United States Department of the Interior, Bureau of Land Management or by a decree of a Court of Law and/or that the corner points mentioned in lines 3, 4 and 5 above were in conformance with the rules of the Michigan Board of Professional Surveyors or by a Decree of a Court of Law; established, re-established, monumented, re-monumented, recovered, found as expressed below:

NOTE: Not more than 4 corners, all in the same town and range, may be recorded on this certificate.

A. Description of original monument and accessories and/or subsequent restoration:  
E2.....WEST 1/4 CORNER SECTION 4, T36N, R4W

SEE EMMET COUNTY REMONUMENTATION PROGRAM CHRONOLOGY OF GLO CORNER ON BACK SIDE OF THIS PAGE.

APPROVED LAND CORNER  
P.A. 345 OF 1990  
Emmet County  
*RE. Olliv*  
18 DEC. 95

B. Description of corner evidence found and/or method applied in restoring or reestablishing corner:  
E2.....FOUND 1/2" REROD 27463 AS DESCRIBED IN LAND CORNER RECORDATION CERTIFICATE RECORDED IN LIBER 2, PAGE 119.

AFTER REVIEWING EVIDENCE AVAILABLE TODAY, THE EMMET COUNTY REMONUMENTATION COMMITTEE MADE A DECISION TO ESTABLISH A NEW LOCATION FOR THIS CORNER. THE NEW CORNER LOCATION LATITUDINAL POSITION BEING ON AN OLD EAST AND WEST FENCE WAS FAVORED BY THE COMMITTEE OVER THE LATITUDE OF THE 1/2" REROD WHICH WAS POSITIONED BASED ON PRORATION. NEW CORNER LOCATION LONGITUDINAL POSITION IS ON THE STRAIGHT LINE BETWEEN CORNER NUMBER E1 (RECORDED IN LIBER 2, PAGE 118) AND CORNER NUMBER E3 (RECORDED IN LIBER A, PAGE 46) AS WAS THE LONGITUDE OF THE 1/2" REROD. THE NEW CORNER LOCATION IS 222.14' NORTH OF THE 1/2" REROD. THE NEW CORNER LOCATION IS 243' WEST OF AN EAST, WEST AND SOUTH FENCE INTERSECTION. SEE SKETCH ON BACK SIDE OF THIS PAGE.

FOUND 1/2" REROD WAS REMOVED AND THE NEW CORNER LOCATION WAS MONUMENTED AS NOTED BELOW.

C. Description of monument for corner and accessories established to perpetuate locating the position of the corner:

E2.....SET A 2" DIAMETER PVC PIPE WITH A BASE MAGNET AND A STANDARD BRASS EMMET COUNTY REMONUMENTATION CAP IN THE NEW CORNER LOCATION ESTABLISHED BY THE EMMET COUNTY REMONUMENTATION COMMITTEE AS NOTED ABOVE.

- 3" MAPLE, AZIMUTH 15°, 46.35' (NAIL AND 27463 CAP)
- 14" MAPLE (3 TREE CLUMP), AZIMUTH 188°, 52.40' (NAIL AND 27463 CAP)
- 14" MAPLE (4 TREE CLUMP), AZIMUTH 122°, 59.32' (NAIL AND 27463 CAP)
- 10" MAPLE, AZIMUTH 259°, 64.72' (NAIL AND 27463 CAP)



Signed by Michael A. Trowbridge Date 12/8/95  
Surveyor's Michigan License No. 27463

EMMET COUNTY REMONUMENTATION PROGRAM

CHRONOLOGY OF GLO CORNER

REMON. CORNER # 84      LCRC # 36-04-E2      TOWNSHIP...MAPLE RIVER

CORNER COMMON TO 4-5, T36N, R4W

SURVEYOR: MICHAEL A. TROWBRIDGE, PLS # 27463

E.C.R. CONTRACT #

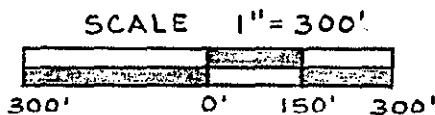
DATE	SURVEYOR	FOUND/SET	SET (WITNESSES)
1840	GLO/MULLETT	SET POST	BEECH 10 S78W 7 SUGAR 8 N58E 14
1984	Trowbridge/survey L. 348, P. 854	set 1/2" rerod	10" maple S65W 18.73' 6" ironwood S89E 4.43' 10" ash S26W 32.11'
1984	Trowbridge LCRC L. 2, P. 119-120	same	same
1985	Trowbridge/survey L. 355, P. 489 revised 1984 survey above	same	same
1990 & 1992	Trowbridge/survey L. 475, P. 169	same	same
1992	Trowbridge/survey L. 477, P. 878 added to 1984 survey above	same	same

supplemental information

a voided survey by Trowbridge of 4/23/84 & 5/8/84...  
(UNRECORDED).....WAS NOT USED.....

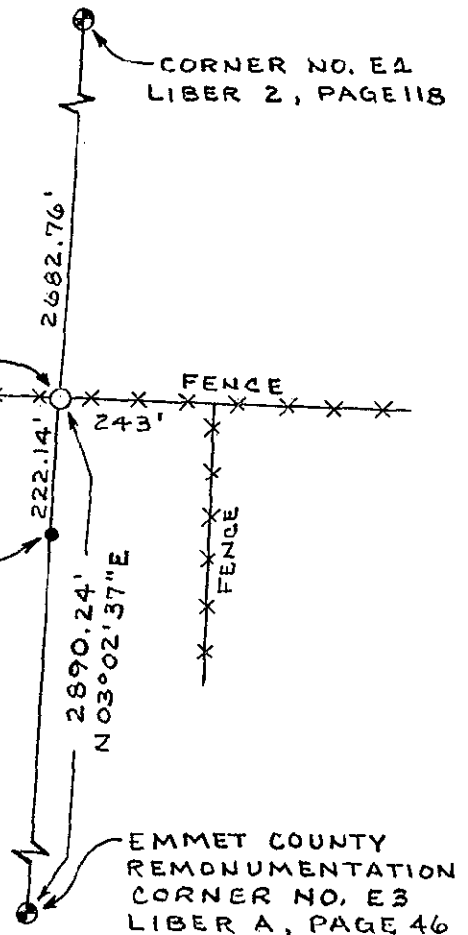
3604-E2

*Michael A. Trowbridge*



EMMET COUNTY  
REMONUMENTATION  
CORNER NO. E2  
MONUMENTED AS  
NOTED WITHIN  
THIS CERTIFICATE

1/2" REROD  
REMOVED  
LIBER 2, PAGE 119



CORNER NO. E1  
LIBER 2, PAGE 118

EMMET COUNTY  
REMONUMENTATION  
CORNER NO. E3  
LIBER A, PAGE 46