

MAR 16 1994

LAND CORNER RECORDATION CERTIFICATE
Filing Requirement of Act 74, Mich. P.A. 1970

1994 FEB 14 AM 10:14

For corners in COMMISSION

<u>EMMET</u> (County)		Located In:	Corner Code #
		MAPLE RIVER TOWNSHIP	
1. Public Land Survey	T	36N R 4W	H-3
	T		
	T		
	T		
2. Property Controlling in Section	S	T	R
	S	T	R
3. Miscellaneous Property in Sec.	S	T	R
	S	T	R

Alma C. Sipe
REGISTER OF DEEDS

LIBER A

PAGE 16

Register of Deeds Stamp & File Number

4. Lot No. _____, Recorded Plat _____
5. Private Claims _____

A	B	C	D	E	F	G	H	I	J	K	L	M
2	6	5	4	3	2	1						
3												
4	7	8	9	10	11	12						
5												
6	18	17	16	15	14	13						
7												
8	19	20	21	22	23	24						
9												
10	30	29	28	27	26	25						
11												
12	31	32	33	34	35	36						
13												

Richard E. Oelke 27 December 93

I, _____, in a field survey on _____, 19 _____, do hereby certify that under requirements of P.A. 74, Michigan P.A. of 1970, the corner points mentioned in lines 1 and 2 above were in conformance with regulations and rules therefore as required in the current manual of survey instructions of the United States Department of the Interior, Bureau of Land Management or by a decree of a Court of Law and/or that the corner points mentioned in lines 3, 4 and 5 above were in conformance with the rules of the Michigan Board of Land Surveyors or by a Decree of a Court of Law; established, re-established, monumented, re-monumented, recovered, found as expressed below:

NOTE: Not more than 4 corners, all in the same town and range, may be recorded on this certificate.

A. Description of original monument and accessories and/or subsequent restoration:

H-3, 1/4 corner between Secs. 3 & 10, T36N, R4W

- 1840 GLO Set cedar post N28°W, 131ks, 30" hemlock & S65°W, 241ks, 24" maple
- 1916 Main Liber 1, page 46, County Surveyor Records, calls for RR spike on the West side of Stone Road.
- 1993 O'Neill LCRC, Liber 3, page 71, set 5/8" iron rod capped LS #30095, reestablished using Main's 1916 survey of Section 3.
 - (1) N58°E, 111.20', 8" red pine tagged 30095 in N face
 - (2) N80°E, 96.88', 10" red pine tagged 30095 in N face
 - (3) S68°E, 95.46', 14" red pine tagged 30095 in N face
 - (4) N90°W, 75.30', 5/8" IR, recorded in Liber 2 on page 158, rerecorded in Liber 3, page 71
 - (5) N24°W, 58.76', 14" red pine tagged 30095 in E face
- 1993 Oelke Survey for Benac, fd 5/8" IR capped LS #30095

B. Description of corner evidence found and/or method applied in restoring or reestablishing corner:

H-3, 1/4 corner between Secs. 3 & 10, T36N, R4W

NOTE: Sometime around 1970 an erroneous marker was set and/or perpetuated by local land surveyors approximately 75' westerly of O'Neill corner. See LCRC liber 2, page 158 for corner recovery by Trowbridge and Liber 3, page 71 for subsequent recovery by O'Neill.

Fd. 5/8" iron rod capped LS #30095 flush with the surface of bit road. This appears to be a careful reestablishment of the original corner based upon the 1916 survey by Main. This position also supports title records in the area and local occupation.

- N48°E, 111.21', fd(1) 8" red pine tagged 30095 in N face
- N70°E, 96.88', fd(2) 10" red pine tagged 30095 in N face
- S78°E, 95.46', fd(3) 14" red pine tagged 30095 in N face
- N90°W, 75.30', (4) 5/8" IR, recorded in Liber 2, page 158 and in Liber 3, page 71 as the 1/4 corner between secs. 3 & 10, falls approximately +/- 3.7' east of centerline of railroad. Not accepted this survey.
- N35°W, 58.74', fd(5) 14" red pine tagged 30095 in E face

C. Description of monument for corner and accessories established to perpetuate locating the position of the corner:

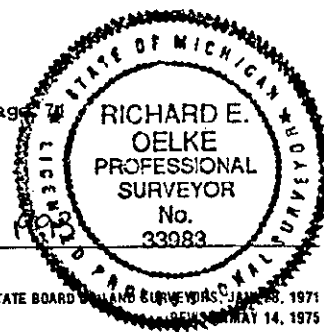
H-3, 1/4 corner between Secs. 3 & 10, T36N, R4W

At 5/8" iron rod capped LS #30095 flush with the surface of bit road. Set 2" diam. PVC pipe, 30" long, capped with a standard brass Emmet County Survey Remonumentation Program cap in monument box. NOTE: marker lies along east edge of a 20" concrete culvert. This corner is accepted as the best available evidence of the position of the original corner.

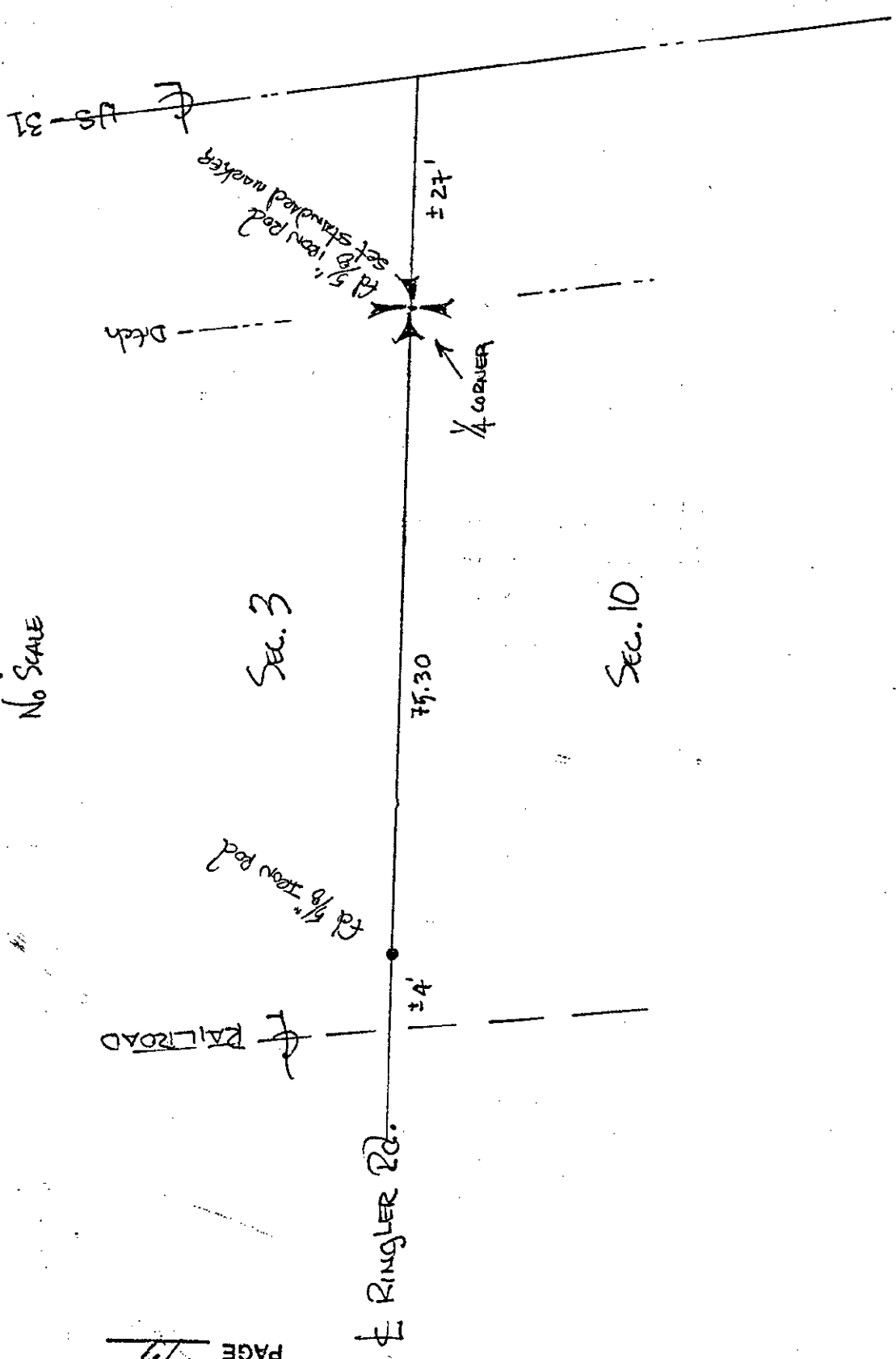
- N48°E, 111.21', fd(1) 8" red pine tagged 30095 in N face
- N70°E, 96.88', fd(2) 10" red pine tagged 30095 in N face
- S78°E, 95.46', fd(3) 14" red pine tagged 30095 in N face
- S52°W, 197.46', 16" red pine tagged 33983 in N face
- N90°W, 75.30', (4) 5/8" IR, recorded in Liber 2, page 158 and in Liber 3, page 71
- N35°W, 58.74', fd(5) 14" red pine tagged 30095 in E face

Signed by Richard E. Oelke Date 27 DECEMBER 1993

Surveyor's Michigan License No. 33983



NORTH
NO SCALE



RINGLER RD.

RAILROAD

Sec. 3

Sec. 10

75.30

1/4'

27'

1/4 CORNER

Ditch

US-31

1/4 5' iron rod set to standard markers