

LAND CORNER RECORDATION CERTIFICATE
Filing Requirement of Act 74, Mich. PA 1970

For Corners In: Emmet Located In _____ Corner Code # _____
(County)

1. Public Land Survey T 36 N R 6 W K-6
T _____ R _____
2. Property Controlling in Section S 14 T 36 N R 6 W 7
S _____ T _____ R _____
3. Miscellaneous Property in Section S _____ T _____ R _____
S _____ T _____ R _____

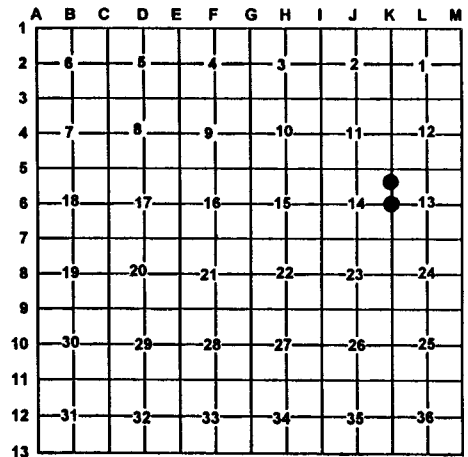
4. Lot No: _____ Recorded Plat: _____

5. Private Claims: _____

I, Carl T. Kiiskila, in a field survey on July 5, 2000 do hereby state that under requirements of PA 74, Michigan PA of 1970, the corner points mentioned in lines 1 and 2 above were in conformance with regulations and rules therefore as required in the current manual of survey instructions of the United States Department of the Interior, Bureau of Land Management or by a decree of a Court of Law and/or that the corner points mentioned in lines 3, 4 and 5 above were in conformance with the rules of the Michigan Board of Land Surveyors or by a Decree of a Court of Law; established, re-established, monumented, recovered, found as expressed below:

NOTE: Not more than 2 corners, all in the same town and range, may be recorded on this certificate.

Register of Deeds Stamp & File Number



A. Description of original monument and accessories and/or subsequent restoration:

7 This corner position was not established during the original government survey.

K-6 GLO John Mullett DS 1840
Beech 9" for quarter section corner
No witness given.
Liber 282, Page 31.
N. DeYoung RLS #20705, 1976 used this corner position to set the center of Section 14.
No description of monument given.

B. Description of corner evidence found and/or method applies in restoring or re-establishing corner:

7 Established the Northeast corner of the Southeast quarter of the Northeast quarter of Section 14 as per B.L.M. instructions for the subdivision of a section. K-6 Found 1" x 3/4" square iron bar

C. Description of monument for corner and accessories established to perpetuate locating the position of the corner:

7 Set 5/8" x 32 rerod with PS cap #33981
Wit: 10" Maple N37°E 4.61'
16" Triple Maple S08°E 12.84'
16" Twin Maple S54°W 28.53'
5" Maple N56°E 34.66'
Fence corner post N15°E 14.54'

K-6 1" x 3/4" iron bar
Wit: * 5" Maple S76°W 18.02'
* 10" Maple N44°W 37.32'
* 4" Elm S04°W 22.59'
8" Maple N15°W 36.47'

* Old witness by others

Signed by: Carl T. Kiiskila
Surveyor's Michigan License No.: 33981

Date: 9-1-00

