

LAND CORNER RECORDATION CERTIFICATE

Filing Requirement of Act 74, Mich. PA 1970

For Corners In:			
Emmet	Located In	Corner Code #	
(County)			
1. Public Land Survey	T 36 N R 6 W	I-4	
	T 36 N R 6 W	I-5	
2. Property Controlling in Section	S T R		
	S T R		
3. Miscellaneous Property in Section	S T R		
	S T R		

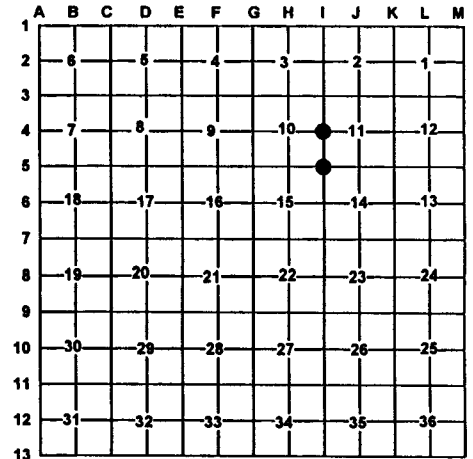
Register of Deeds Stamp & File Number

4. Lot No: _____ Recorded Plat: _____

5. Private Claims: _____

I, Carl T. Kiiskila, in a field survey on July 5, 1999 do hereby state that under requirements of PA 74, Michigan PA of 1970, the corner points mentioned in lines 1 and 2 above were in conformance with regulations and rules therefore as required in the current manual of survey instructions of the United States Department of the Interior, Bureau of Land Management or by a decree of a Court of Law and/or that the corner points mentioned in lines 3, 4 and 5 above were in conformance with the rules of the Michigan Board of Land Surveyors or by a Decree of a Court of Law; established, re-established, monumented, recovered, found as expressed below:

NOTE: Not more than 2 corners, all in the same town and range, may be recorded on this certificate.



A. Description of original monument and accessories and/or subsequent restoration:

- | | |
|---|---|
| <p>I-4 GLO John Mullett DS 1840
Set quarter section post
Wit: Birch 9" S25°E 26 links
 Birch 6" S54°W 8 links
Liber 463, Page 972, Richard E. Oelke L.S. #33983
found 1/2" iron capped L.S. #20705.
Wit: 12" Twin Cherry N44°E 53.05'
 14" Maple S49°E 47.63'
 10" Maple S07°E 37.09'
 36" Maple S70°W 85.16'</p> | <p>I-5 GLO John Mullett DS 1840
Set post corner section 2,3,10 and 11
Wit: Birch 12" S39°E 24links
 Birch 8" S58°W 12 links
Liber 1, Page 232, Nicholas B. DeYoung, R.L.S. #20705 set
1/2" rod for the SW corner of section 11
Wit: N30°E 20.8' 14" Maple
 S80°E 6.7' 16" Maple
 S75°W 6.35' 18" Maple</p> |
|---|---|

B. Description of corner evidence found and/or method applies in restoring or re-establishing corner:

- | | |
|--|---------------------------|
| I-4 Found a 1/2" iron rod with P.S. cap #30095 | I-5 Found a 1/2" iron rod |
|--|---------------------------|

C. Description of monument for corner and accessories established to perpetuate locating the position of the corner:

- | | |
|---|---|
| <p>I-4 Replaced 1/2" rod with 5/8" X 32" rered with P.S. cap #33981 and monument box.
Wit: * 30" Maple S71°W 85.27'
 Utility Pole N40°E 37.02'
 * 12" Maple S42°E 47.64'
 8" Maple S03°E 62.58'
 ¢ of Hurd Rd. South 2±</p> | <p>I-5 Found 1/2" iron with PS cap
Wit: * 18" Maple N45°E 20.86'
 * 20" Maple S60°E 8.67'
 * 24" Maple S71°W 8.47'
 * 8" Maple N42°w 17.44'

* Old witness by others</p> |
|---|---|

Signed by: Carl T. Kiiskila

Date: 8-1-00

Surveyor's Michigan License No.: 33981

