

**LAND CORNER RECORDATION CERTIFICATE**  
Filing Requirement of Act 74, Mich. PA 1970

For Corners In: Emmet Located In \_\_\_\_\_ Corner Code # \_\_\_\_\_  
(County)

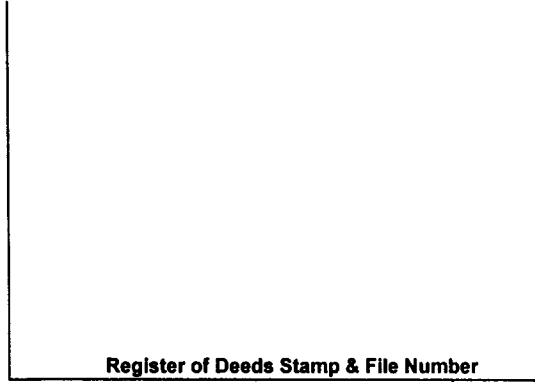
1. Public Land Survey T 36N R 6W I-7  
T 36N R 6W I-6

2. Property Controlling in Section S \_\_\_\_\_ T \_\_\_\_\_ R \_\_\_\_\_  
S \_\_\_\_\_ T \_\_\_\_\_ R \_\_\_\_\_

3. Miscellaneous Property in Section S \_\_\_\_\_ T \_\_\_\_\_ R \_\_\_\_\_  
S \_\_\_\_\_ T \_\_\_\_\_ R \_\_\_\_\_

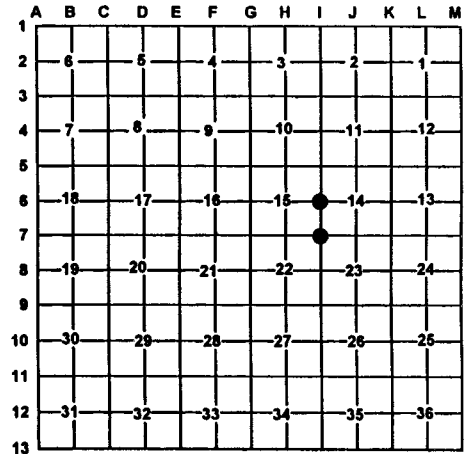
4. Lot No: \_\_\_\_\_ Recorded Plat: \_\_\_\_\_

5. Private Claims: \_\_\_\_\_



I, Carl T. Kiiskila, in a field survey on July 5, 2000 do hereby state that under requirements of PA 74, Michigan PA of 1970, the corner points mentioned in lines 1 and 2 above were in conformance with regulations and rules therefore as required in the current manual of survey instructions of the United States Department of the Interior, Bureau of Land Management or by a decree of a Court of Law and/or that the corner points mentioned in lines 3, 4 and 5 above were in conformance with the rules of the Michigan Board of Land Surveyors or by a Decree of a Court of Law, established, re-established, monumented, recovered, found as expressed below:

**NOTE: Not more than 2 corners, all in the same town and range, may be recorded on this certificate.**



**A. Description of original monument and accessories and/or subsequent restoration:**

I-7 GLO John Mullett DS 1840 Set post corner 14,15,22 and 23 Wit: Birch 6" S69°E 21 links Birch 10" S85°W 18 links Liber 1, Page 211, Richard Bidstrup, RLS#11360 found a railroad spike for corner: Wit: 8" Maple S17°E 37.48' 8" Elm S41°E 68.80' Liber 1, Page 232, N. DeYoung, RLS#20705 found a T-iron Wit: 8" Maple S17°E 37.48' 8" Elm S41°E 68.80' Liber 282, Page 31, N DeYoung RLS#20705 Shows corner described above	I-6 GLO John Mullett DS 1840 Set quarter section post Wit: Birch 6" S56°W 31 links Sugar 16" S62°E 27 links Liber 1, Page 232, N. DeYoung, RLS#20705 found 5/8" rod in road on N-S fence: Wit: 7" Maple S05°W 36.74' 3" Aspen S61°E 64.12' 6" Maple N36°E 74.79' Liber 282, Page 31, N DeYoung RLS#20705 Shows corner described above
--	--

**B. Description of corner evidence found and/or method applies in restoring or re-establishing corner:**

I-7 Found a 5/8" rerod in a monument box fitting N. DeYoung's survey recorded in Liber 282, Page 31	I-6 Found a 5/8" rod fitting N. DeYoung's survey recorded in Liber 282, Page 31
---	---

**C. Description of monument for corner and accessories established to perpetuate locating the position of the corner:**

I-7 Found 5/8" Rerod in monument box Wit: *14" Maple S20°E 37.47' * 8" Maple South 42.17' *10" Twin Beech N28°E 53.30' *Power Pole N57°E 92.23'	I-6 Replaced 5/8"X24" rod with 5/8"X32 rerod with P.S. cap #33981 and placed monument box. Wit: 14" White Pine S29°W 47.21' 6" Maple N07°E 67.29' 7" Maple N27°E 78.64' 4" Twin maple S38°E 45.93'
---	--

\*Old witness by others

Signed by: Carl T. Kiiskila  
Surveyor's Michigan License No.: 33981

Date: 8-1-00

